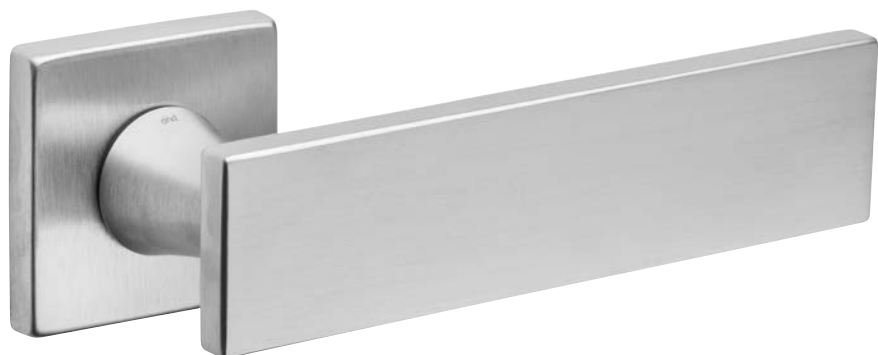


# aretè L 02

design:  
**Mauro Ronchi**

made in italy



**AL14**  
PCS

224-

dnd22-23

Ottone forgiato  
*Forged brass*



**AB**  
Bronzato  
*Antique bronze*



**OGH**  
Bronzo satinato opaco  
*Matt satin bronze*



**OC**  
Power cromo lucido  
*Power polished chrome*



**PCS**  
Power cromo satinato  
*Power satin chrome*



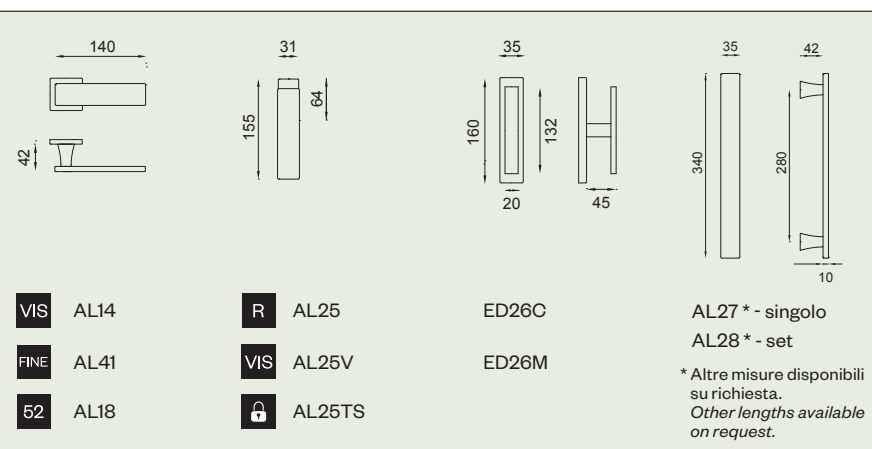
**PGS | forte®**  
Grafito satinato  
*Satin graphite*



**PVD-SG | forte®**  
Oro antico satinato  
*Antique satin gold*



**PVX | forte®**  
Inox satinato  
*Satin steel*



225