



CONFAIÖNIERI

MATRIX collection
maniglie per mobili.handles for furniture

Matrix collection

GAMMA/RANGE

design
FABIO CASIRAGHI_PAOLO NAVA DESIGN STUDIO

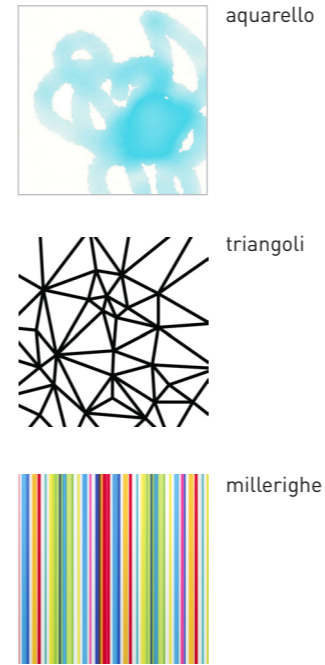
BASIC



BLANK



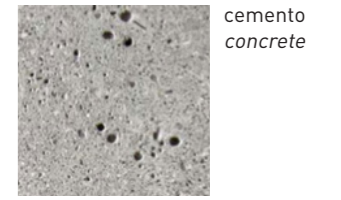
DIGITAL



3D



CONCRETE



WOOD



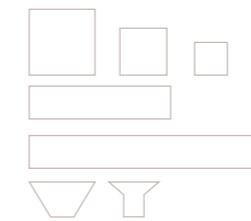
*il produttore inserirà il materiale che desidera (laminato, legno, altro decorativo...)

*customer will apply the insert of the material he prefers (laminated, wood, decorative...)

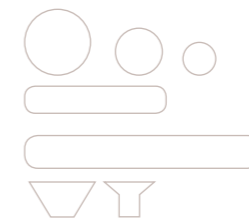
FORME E DIMENSIONI/ SHAPES AND SIZES

metallo pressofuso / die-cast metal

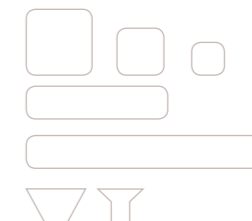
SQUARE



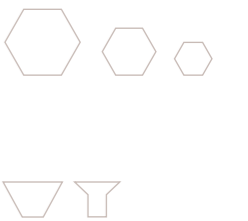
ROUND



SQOUND



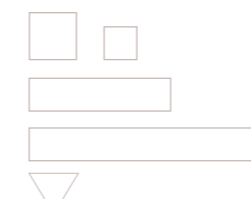
EXAGON



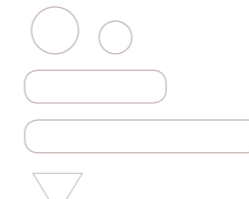
sezione/section

CONCRETE

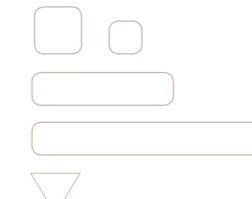
SQUARE



ROUND



SQOUND



WOOD

SQUARE



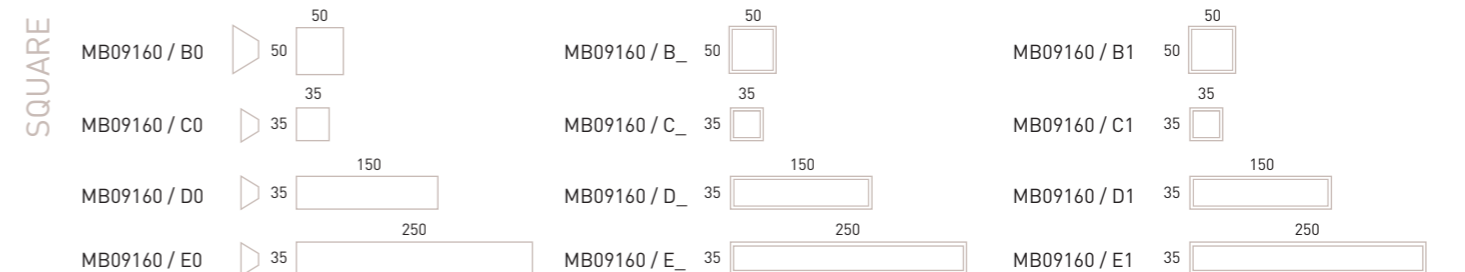
sezione/section

Già disponibili / already available

BASIC

COMBI

BLANK

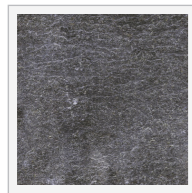


COMBI

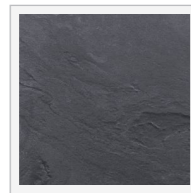
bianco opaco
matt white



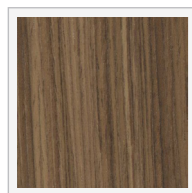
cemento / concrete



chiolite / chiolite



ardesia / slate

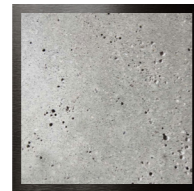


rovere termo
thermo oak

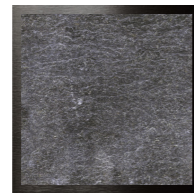


lati chiaro
light lati

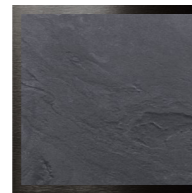
antracite opaca
satin finish anthracite



cemento / concrete



chiolite / chiolite



ardesia / slate

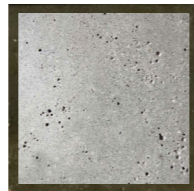


rovere termo
thermo oak

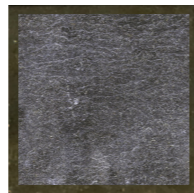


lati chiaro
light lati

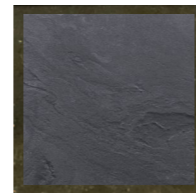
bronzato ossidato
oxidated bronze



cemento / concrete



chiolite / chiolite



ardesia / slate



rovere termo
thermo oak



lati chiaro
light lati

Matrix collection

CONFAIÖNIERI



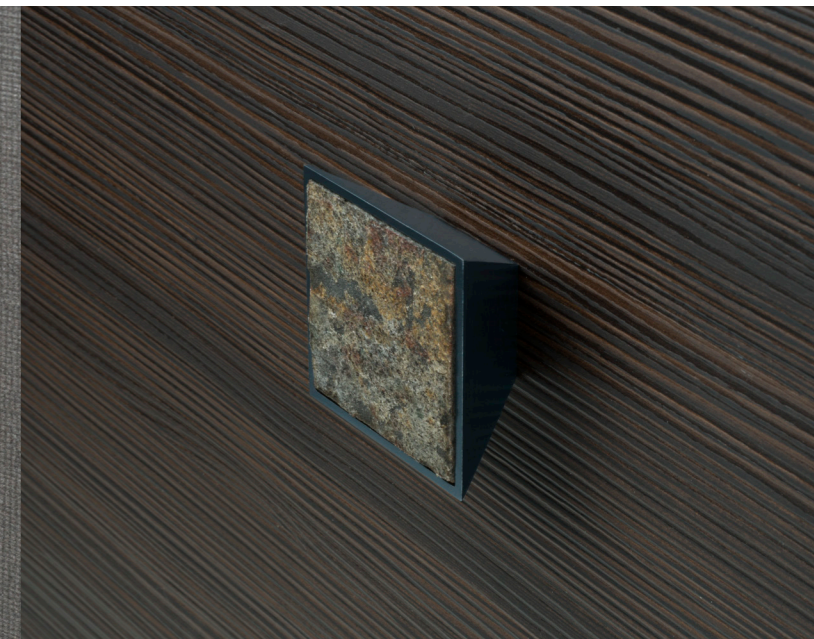
Round Basic



Squound Basic



Square Combi

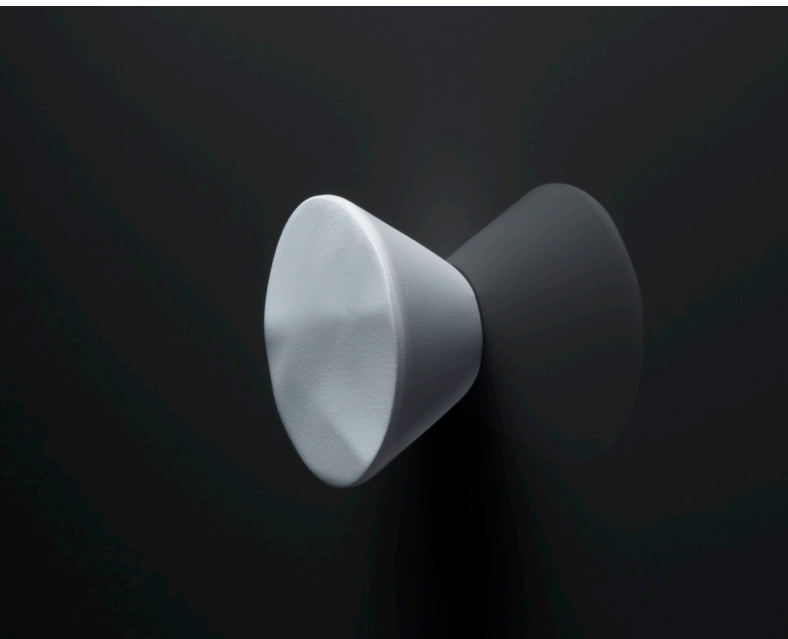


Square Combi

“ con Matrix, la maniglia non è più un mero elemento decorativo, piuttosto una parte dell'intero, capace di mimetizzarsi, coordinarsi, contrastare, arricchire o stupire. In ogni caso di appartenere al progetto stesso. ”

Un concept progettuale che non si limita nel dare forma ad una funzione, ma prova a definire una “matrice” le cui righe e colonne mettono in relazione molteplici elementi progettuali: funzione, forma, dimensione, materia e matericità, colore e finitura, patterns 2D e textures 3D. La loro combinazione genera una collezione di maniglie mutanti, capaci cioè di entrare alla radice del progetto del mobile, non più un elemento decorativo da applicare alla superficie finita delle ante, piuttosto come una parte dell'intero, talvolta capaci di mimetizzarsi, di coordinarsi, di contrastare, di arricchire o stupire, in ogni caso di appartenere al progetto stesso. Ecco una matrice industriale capace di generare qualcosa di personale o individuale, la cui forme archetipiche sono complementari ad altri elementi e finiture selezionabili tra quelli/e di serie o personalizzabili secondo il proprio progetto sartoriale. Un sistema dedicato ai progettisti ed all'industria del mobile, strumento e prodotto al contempo.

Fabio Casiraghi



Round 3D



Squound Concrete



Square Wood



Square Blank

A design concept that is not limited in shaping a function, but it tries to define a "matrix" whose rows and columns put into relation multiple design elements: function, shape, size, material and materiality, color and finish, 2D patterns and 3D textures.

Their combination generates a collection of mutants handles, namely able to get to the furniture design root, no more a decorative element to be applied to the finished doors surface, rather as a part of the whole, sometimes capable to camouflage, to coordinate, to counteract, to enrich or surprise, in each case the handle belongs to the same project.

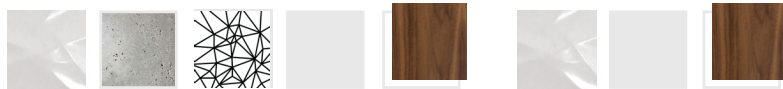
Here is an industrial matrix, capable of generating something personal or individual, whose archetypal forms are complementary to other elements and finishes selected from the standard selection or customized to the tailoring project.

A system dedicated to designers and the furniture industry: tool and product at the same time.

Fabio Casiraghi

“ with Matrix, the handle is no more a decorative element only, rather a part of the whole, sometimes capable to camouflage, coordinate, counteract, enrich or surprise. In each case the handle belongs to the same project. ”

MATRIX collection



“ con Matrix, la maniglia non è più un mero elemento decorativo, piuttosto una parte dell'intero, capace di mimetizzarsi, coordinarsi, contrastare, arricchire o stupire. In ogni caso di appartenere al progetto stesso. ”

“ with Matrix, the handle is no more a decorative element only, rather a part of the whole, sometimes capable to camouflage, coordinate, counteract, enrich or surprise. In each case the handle belongs to the same project. ”



Gruppo Confalonieri

Gruppo Confalonieri spa
via Prealpi 11
I-20833 Giussano (MB) Italy
tel. +39 0362 3535 1
fax +39 0362 851656
info@gruppoconfalonieri.it
www.gruppoconfalonieri.it