

# CATALOGUE

# 2022

---

CONCEALED HINGE  
SYSTEMS FOR  
RESIDENTIAL DOORS



# INDEX

---

## Model versions for unrebrated residential doors from 40 kg to 80 kg

12	<b>AN 140 3D</b>	up to 40 kg	
13	<b>AN 140 3D ALU</b>	up to 40 kg	aluminium framed doors
14	<b>AN 142 3D</b>	up to 40 kg	with central milling
15	<b>AN 160 3D</b>	up to 60 kg	
16	<b>AN 160 3D ALU</b>	up to 60 kg	aluminium framed doors
17	<b>AN 180 3D</b>	up to 80 kg	

---

## Model versions for doors with recessed frame facings from 12-14 mm

20	<b>AN 141 3D FVZ 12/38</b>	up to 40 kg	with 12 mm recessed frame facings	38 mm door thickness
21	<b>AN 141 3D FVZ 12/45</b>	up to 40 kg	with 12 mm recessed frame facings	45 mm door thickness
22	<b>AN 141 3D FVZ 14/40</b>	up to 40 kg	with 14 mm recessed frame facings	40 mm door thickness
23	<b>AN 141 3D FVZ 14/44</b>	up to 40 kg	with 14 mm recessed frame facings	44 mm door thickness
24	<b>AN 161 3D FVZ 12/38</b>	up to 60 kg	with 12 mm recessed frame facings	38 mm door thickness
25	<b>AN 161 3D FVZ 12/45</b>	up to 60 kg	with 12 mm recessed frame facings	45 mm door thickness
26	<b>AN 161 3D FVZ 14/40</b>	up to 60 kg	with 14 mm recessed frame facings	40 mm door thickness
27	<b>AN 164 3D FVZ 12/38</b>	up to 60 kg	with 12 mm recessed frame facings	38 mm door thickness

---

## Model versions for doors with reduced hinge frame part

30	<b>AN 130 2D</b>	up to 20 kg	
31	<b>AN 150 3D</b>	up to 40 kg	
32	<b>AN 150 3D ALU</b>	up to 40 kg	aluminium framed doors
33	<b>AN 150 3D 28</b>	up to 40 kg	28 mm door thickness
34	<b>AN 150 3D 40</b>	up to 40 kg	40 mm door thickness
35	<b>AN 150 3D 44</b>	up to 40 kg	44 mm door thickness
36	<b>AN 170 3D</b>	up to 60 kg	
37	<b>AN 170 3D ALU</b>	up to 60 kg	aluminium framed doors
38	<b>AN 170 3D 40</b>	up to 60 kg	40 mm door thickness
39	<b>AN 170 3D 44</b>	up to 60 kg	44 mm door thickness
40	<b>AN 172 3D</b>	up to 60 kg	38 - 45 mm door thickness

---

## Model versions with integrated closing function

44	<b>AN 107 3D C40</b>	closing power 20-40 kg	
45	<b>AN 107 3D C60</b>	closing power 40-60 kg	
46	<b>AN 108 3D SC45</b>	closing power 45 kg	integrated damping function

---

## 48 Routing data

---

## 57 Application accessories

---

## 59 Accessories

---

## 60 Finishes

---



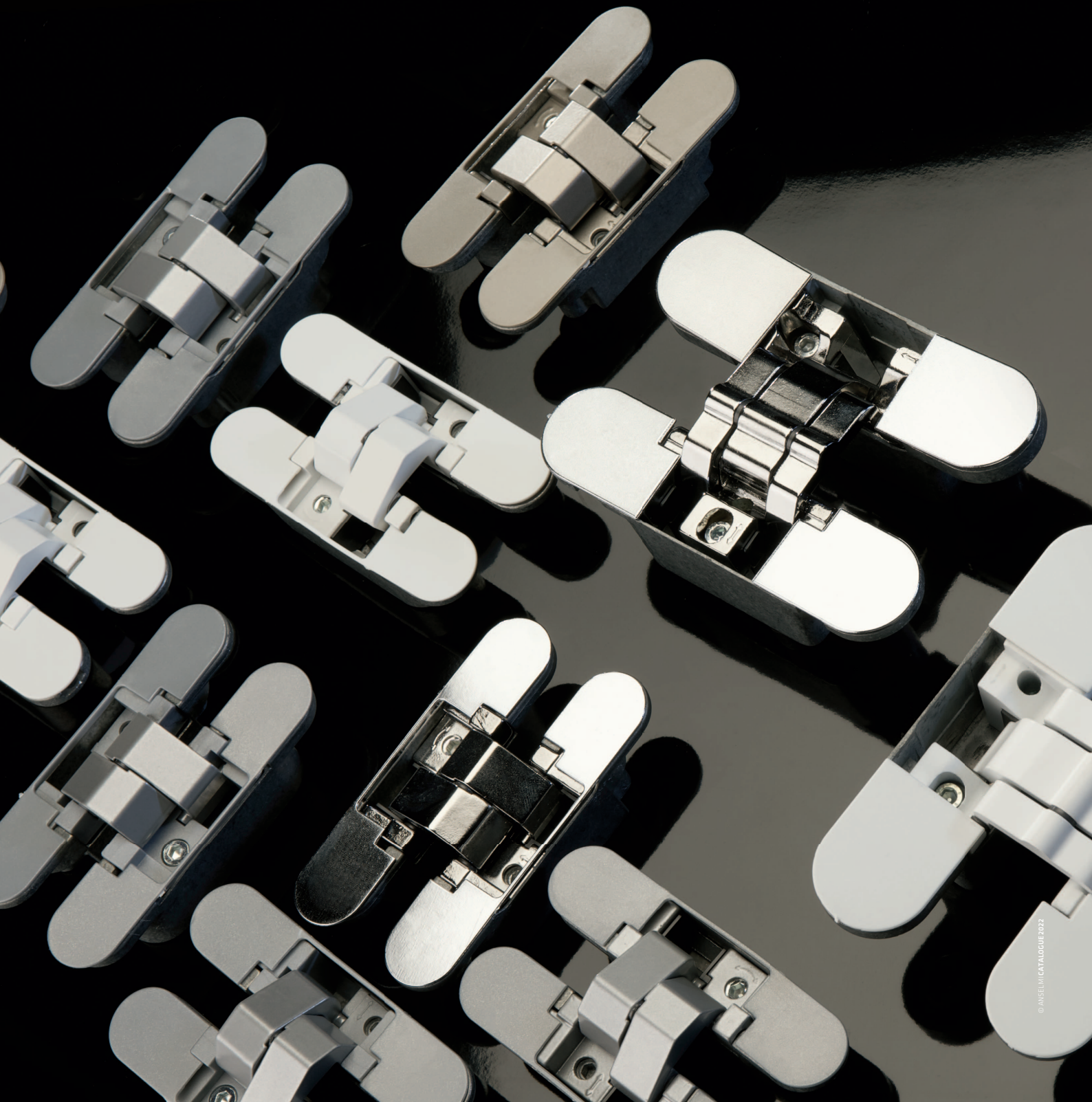
## CONCEALED HINGE SYSTEMS FOR RESIDENTIAL DOORS

The extensive range of hinges produced by Anselmi offers high quality products for light interior doors. These concealed hinge systems are suitable mostly for interior residential doors as well as for internal doors up to 80 kg and are available in several model versions.

Doors with recessed frame facings are particularly requested by the modern architecture which looks for minimalism in interior rooms. Thanks to the FVZ models of Anselmi the door frame can disappear behind a drywall or a woodwork leaving just the essence of the door visible to the eyes. Anselmi has also developed a completely concealed self closing hinge system offering both functionality and elegance to the door.

For those manufacturers searching for production economies of scale and easy installation of their products on-site, over the years Anselmi developed several interesting hinge solutions. Model versions with reduced hinge frame part allow the installation of frame architrave without any additional operation on-site, while the central milling on the door panel offers a complete reversibility of the door, that can be used indistinctly for left and right as well as for inward and outward opening. Furthermore, the extensive programme allows to switch between the different hinge models, increasing the load capacity whilst keeping the same milling geometry.

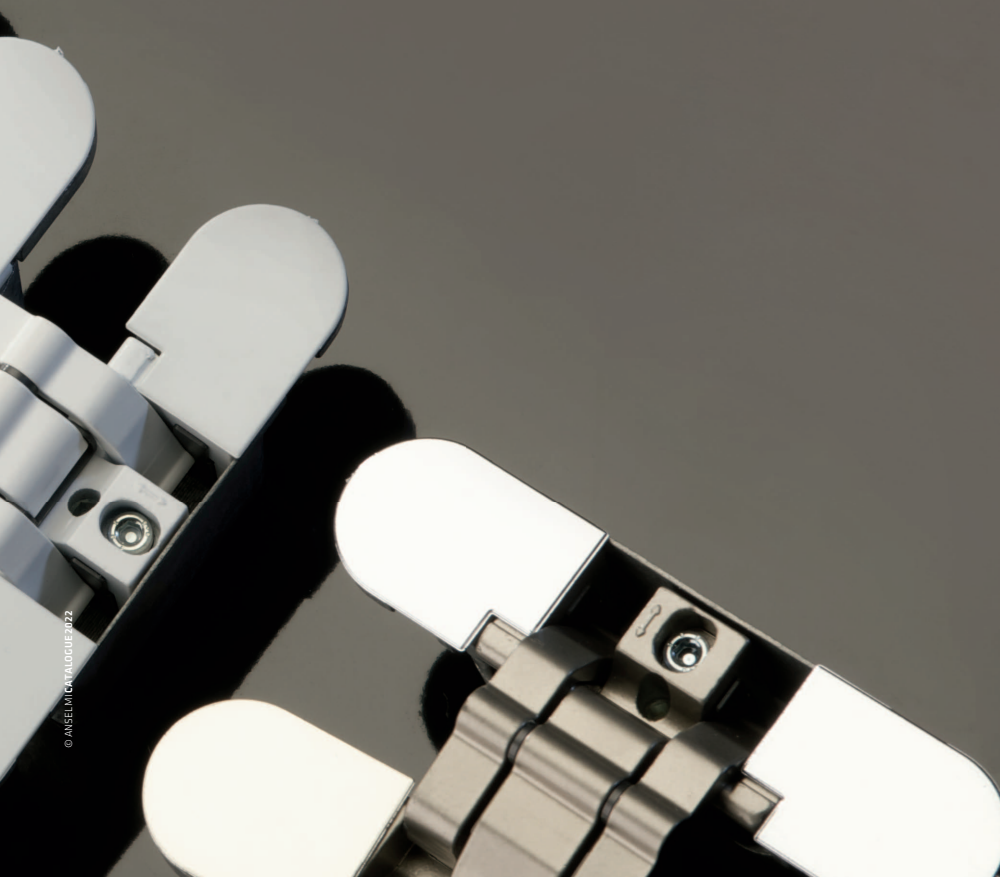
Hinge systems from Anselmi are three-dimensionally adjustable and guarantee a long lasting, maintenance-free operation of the door and are available in 9 aesthetical finishes.



## QUALITY MADE IN ITALY SINCE 1973

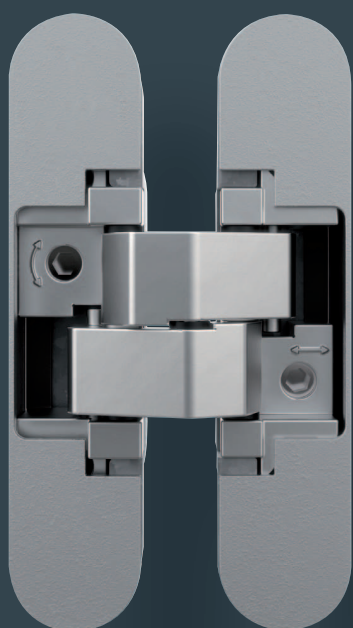
Anselmi & C. srl is an Italian manufacturer of concealed hinge systems and hardware and since 2017 member of the SIMONSWERK group. The traditional family business is located in the Italian town of Roncade, near Venice. The company was founded in 1973 by Bepi Anselmi – initially with a focus on hinges for high-quality furniture – for several years with a focus on concealed hinge systems for residential interior doors. With the quality-orientated view the Anselmi concealed hinge programme matches perfectly to the product range and the philosophy of SIMONSWERK.

From the first idea to the prototyping, from the creation of the moulds to the assembly of the hinges, all aspects related to the production of the hinges take place within the facilities of Anselmi. Sustainable and environmental friendly processes are part of the company philosophy and are achieved through an efficient production that puts at first place recycling of resources and energy saving. Before releasing the product for sales, hinges are tested according to the latest norms inside the dedicated test area where load capacity tests and cycle tests are performed.



## PRODUCT OVERVIEW

Anselmi offers concealed hinge systems for interior residential doors up to 80 kg. Here is an overview of the model versions.

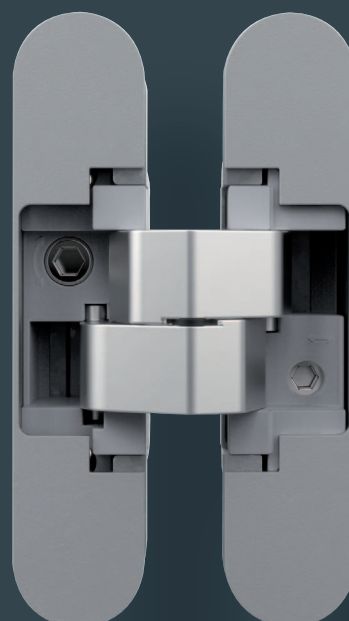


Model versions for unrebated residential doors from 40 kg to 80 kg

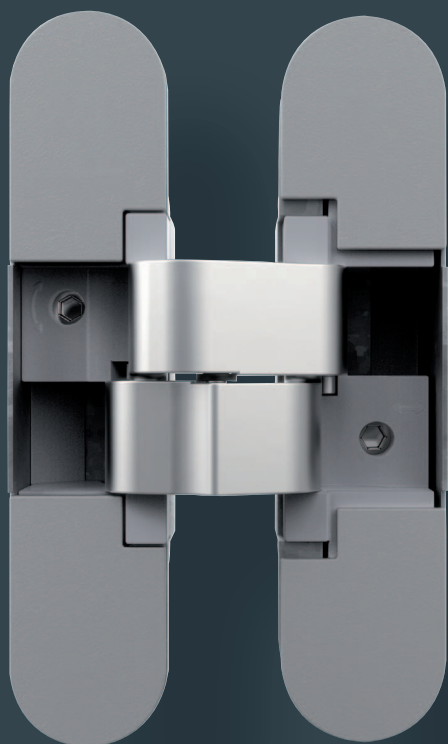
---

Model versions for doors with reduced hinge frame part

---





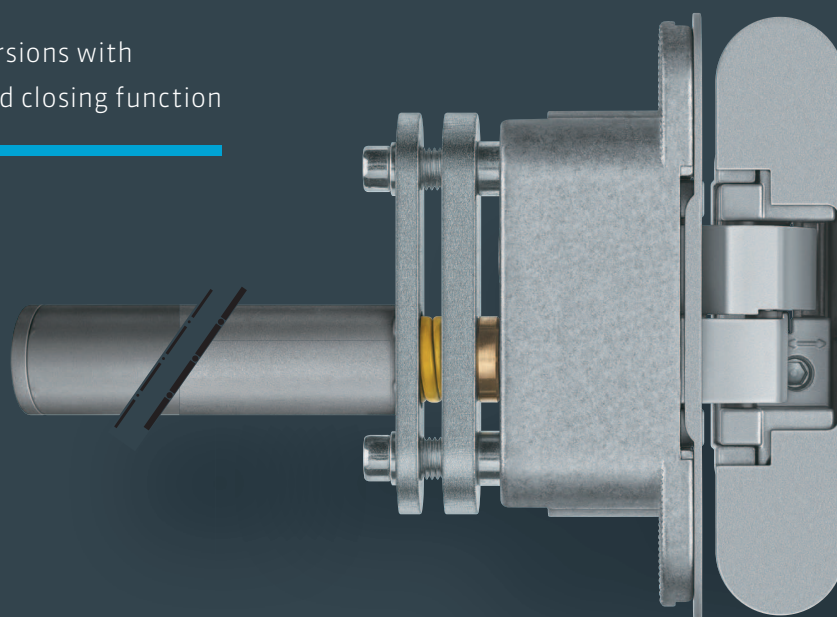


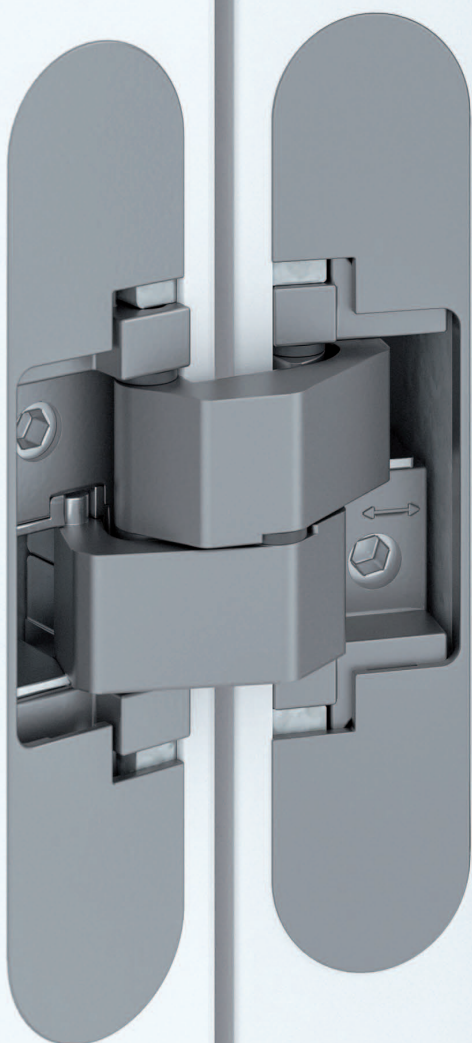
Model versions for doors with recessed  
frame facings from 12-14 mm

---

Model versions with  
integrated closing function

---





Hinge system AN 160 3D

## MODEL VERSIONS FOR UNREBATED RESIDENTIAL DOORS

- › completely concealed
- › for unrebated residential doors
- › versions for aluminium framed doors
- › load capacities up to 80 kg
- › opening angle 180°

## AN 140 3D

for unrebated residential doors up to 40 kg

hinge		up to 40 kg
-------	--	-------------

### Product features

- completely concealed hinge system
- for timber and aluminium frames
- for unrebated residential doors
- 3D adjustable (side +/- 1.5 mm, height +/- 2.5 mm, compression +/- 1.0 mm)
- material zamak/acetal

### Technical details

load capacity	<b>i</b> 2 hinges per door leaf (900x2100 mm)	40.0 kg
overall length		110.0 mm
width (frame)		24.0 mm
width (door)		24.0 mm
cutter diameter		14.0 or 16.0 mm
collar ring diameter		25.0 or 27.0 mm
opening angle		180°

### Finish

Satin Chrome (AN 014), Black (AN 018), Antique Bronze (AN 035), Aluminium Chrome (AN 036), Polished Brass (AN 037), Polished Chrome (AN 039), Satin Nickel (AN 044), RAL 9016 Traffic White (AN 049)

### Combination

receiver	casing frame	AN 140 3D FZ
----------	--------------	--------------

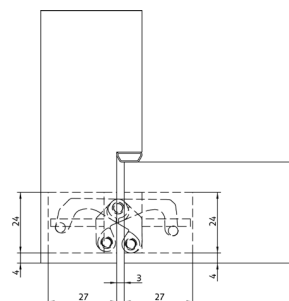
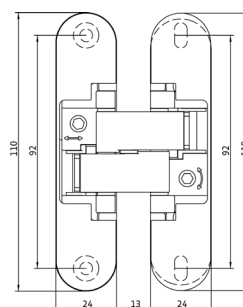
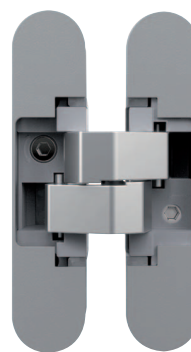
### Note

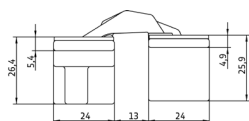
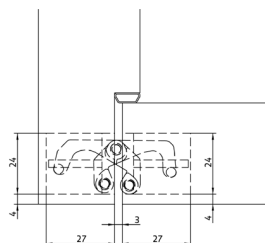
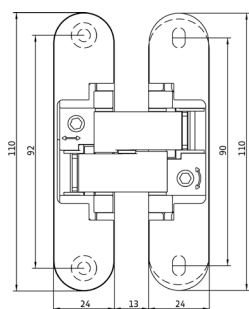
**i** The load capacity mentioned above refers to the use of 2 hinges per door leaf (900 x 2100 mm).

Suggested screws:

Frame side: Countersunk head screws DIN 7505 A, Diameter 4.5 mm

Door side: Pan head screws DIN 7505 B, Diameter 4.5 mm





## AN 140 3D ALU

for unrebated residential doors with aluminium frames up to 40 kg

hinge	aluminium framed doors	up to 40 kg
-------	------------------------	-------------

### Product features

- completely concealed hinge system
- for timber and aluminium frames
- for unrebated residential doors with aluminium frames
- 3D adjustable (side +/- 1.5 mm, height +/- 1.5 mm, compression +/- 1.0 mm)
- material zamak/acetel

### Technical details

load capacity	<b>i</b> 2 hinges per door leaf (900x2100 mm)	40.0 kg
overall length		110.0 mm
width (frame)		24.0 mm
width (door)		24.0 mm
cutter diameter		14.0 or 16.0 mm
collar ring diameter		25.0 or 27.0 mm
opening angle		180°

### Finish

Satin Chrome (AN 014), Black (AN 018), Antique Bronze (AN 035), Aluminium Chrome (AN 036), Polished Brass (AN 037), Polished Chrome (AN 039), Satin Nickel (AN 044), RAL 9016 Traffic White (AN 049)

### Combination

receiver	casing frame	AN 140 3D FZ
----------	--------------	--------------

### Note

**i** The load capacity mentioned above refers to the use of 2 hinges per door leaf (900 x 2100 mm).

Suggested screws:

Frame side: Countersunk head screws DIN 7505 A, Diameter 4.5 mm

Door side: Countersunk head screws DIN 7505 A, Diameter 4.5 mm

## AN 142 3D

for unrebated residential doors with central installation up to 40 kg

hinge up to 40 kg

### Product features

- completely concealed hinge system
- for timber and aluminium frames
- for unrebated residential doors
- 3D adjustable (side +/- 1.5 mm, height +/- 2.5 mm, compression +/- 1.0 mm)
- central installation
- door thicknesses 35-45 mm
- material zamak/acetal

### Technical details

load capacity	<b>i</b> 2 hinges per door leaf (900x2100 mm)	40.0 kg
overall length		144.0 mm
width (frame)		27.0 mm
width (door)		27.0 mm
cutter diameter		14.0 or 16.0 mm
collar ring diameter		25.0 or 27.0 mm
opening angle		180°

### Finish

Satin Chrome (AN 014), Black (AN 018), Antique Bronze (AN 035), Aluminium Chrome (AN 036), Polished Brass (AN 037), Polished Chrome (AN 039), Satin Nickel (AN 044), RAL 9016 Traffic White (AN 049)

### Note

**i** The load capacity mentioned above refers to the use of 2 hinges per door leaf (900 x 2100 mm).

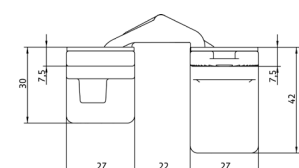
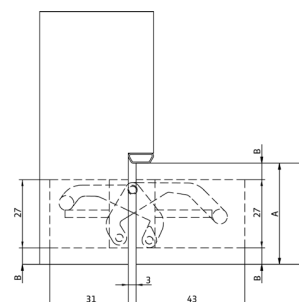
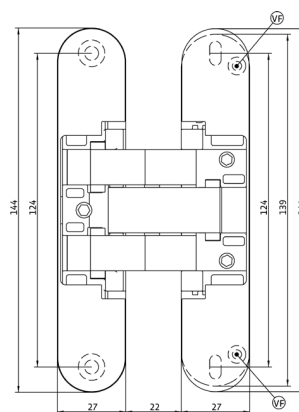
Suggested screws:

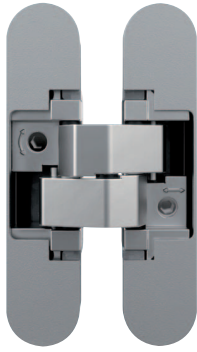
Frame side: Countersunk head screws DIN 7505 A, Diameter 4.5 mm

Door side: Pan head screws DIN 7505 B, Diameter 4.5 mm

If necessary, it is possible to lock the vertical adjustment of the hinge by means of a vertical adjustment screw (VF).

The central installation applies for door thicknesses between 35 mm and 45 mm. The routing position (B) is always the difference between the door thickness (A) and the hinge width of 27 mm divided by two.





## AN 160 3D

for unrebated residential doors up to 60 kg

hinge		up to 60 kg
-------	--	-------------

### Product features

- completely concealed hinge system
- for timber and aluminium frames
- for unrebated residential doors
- 3D adjustable (side +/- 1.5 mm, height +/- 2.5 mm, compression +/- 1.0 mm)
- material zamak

### Technical details

load capacity	<b>i</b> 2 hinges per door leaf (900x2100 mm)	60.0 kg
overall length		110.0 mm
width (frame)		24.0 mm
width (door)		24.0 mm
cutter diameter		14.0 or 16.0 mm
collar ring diameter		25.0 or 27.0 mm
opening angle		180°

### Finish

Rustic Umber (AN 012), Satin Chrome (AN 014), Light Bronze (AN 016), Black (AN 018), Antique Bronze (AN 035), Aluminium Chrome (AN 036), Polished Brass (AN 037), Polished Chrome (AN 039), Satin Nickel (AN 044), RAL 9016 Traffic White (AN 049), Anthracite (AN 050), Medium Bronze (AN 051), Copper (AN 052)

### Combination

receiver	casing frame	AN 140 3D FZ
----------	--------------	--------------

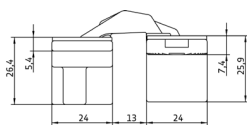
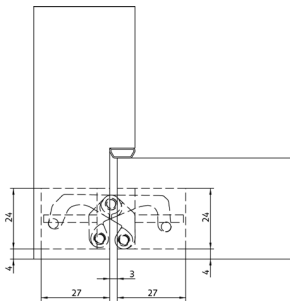
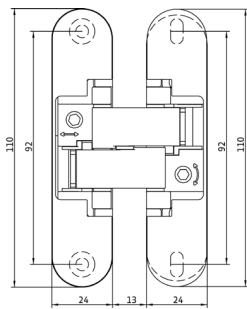
### Note

**i** The load capacity mentioned above refers to the use of 2 hinges per door leaf (900 x 2100 mm).

Suggested screws:

Frame side: Countersunk head screws DIN 7505 A, Diameter 4.5 mm

Door side: Pan head screws DIN 7505 B, Diameter 4.5 mm



## AN 160 3D ALU

for unrebated residential doors with aluminium frames up to 60 kg

hinge	aluminium framed doors	up to 60 kg
-------	------------------------	-------------

### Product features

- completely concealed hinge system
- for timber and aluminium frames
- for unrebated residential doors with aluminium frames
- 3D adjustable (side +/- 1.5 mm, height +/- 1.5 mm, compression +/- 1.0 mm)
- material zamak

### Technical details

load capacity	<b>i</b> 2 hinges per door leaf (900x2100 mm)	60.0 kg
overall length		110.0 mm
width (frame)		24.0 mm
width (door)		24.0 mm
cutter diameter		14.0 or 16.0 mm
collar ring diameter		25.0 or 27.0 mm
opening angle		180°

### Finish

Satin Chrome (AN 014), Black (AN 018), Antique Bronze (AN 035), Aluminium Chrome (AN 036), Polished Brass (AN 037), Polished Chrome (AN 039), Satin Nickel (AN 044), RAL 9016 Traffic White (AN 049)

### Combination

receiver	casing frame	AN 140 3D FZ
----------	--------------	--------------

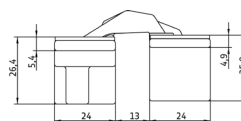
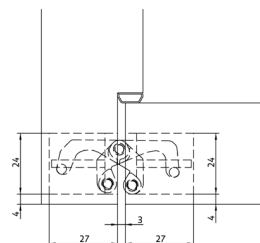
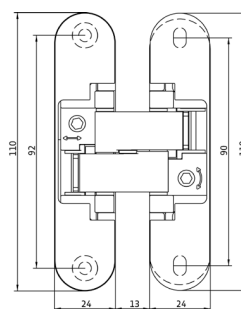
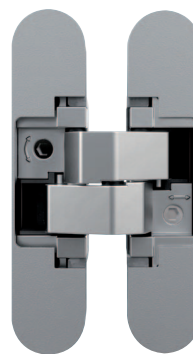
### Note

**i** The load capacity mentioned above refers to the use of 2 hinges per door leaf (900 x 2100 mm).

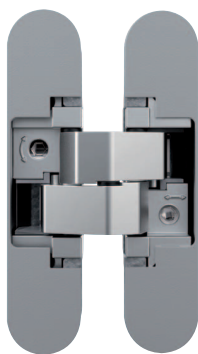
Suggested screws:

Frame side: Countersunk head screws DIN 7505 A, Diameter 4.5 mm

Door side: Countersunk head screws DIN 7505 A, Diameter 4.5 mm







## AN 180 3D

for unrebated residential doors up to 80 kg

hinge		up to 80 kg
-------	--	-------------

### Product features

- completely concealed hinge system
- for timber and aluminium frames
- for unrebated residential doors
- 3D adjustable (side +/- 1.5 mm, height +/- 2.5 mm, compression +/- 1.0 mm)
- material zamak/steel

### Technical details

load capacity	<b>i</b> 2 hinges per door leaf (900x2100 mm)	80.0 kg
overall length		110.0 mm
width (frame)		24.0 mm
width (door)		24.0 mm
cutter diameter		14.0 or 16.0 mm
collar ring diameter		25.0 or 27.0 mm
opening angle		180°

### Finish

Rustic Umber (AN 012), Satin Chrome (AN 014), Light Bronze (AN 016), Black (AN 018), Antique Bronze (AN 035), Aluminium Chrome (AN 036), Polished Brass (AN 037), Polished Chrome (AN 039), Satin Nickel (AN 044), RAL 9016 Traffic White (AN 049), Anthracite (AN 050), Medium Bronze (AN 051), Copper (AN 052)

### Combination

receiver	casing frame	AN 140 3D FZ
----------	--------------	--------------

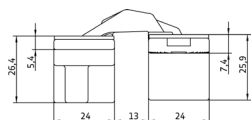
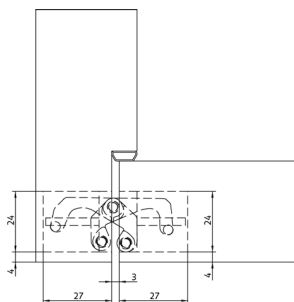
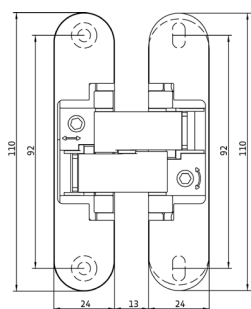
### Note

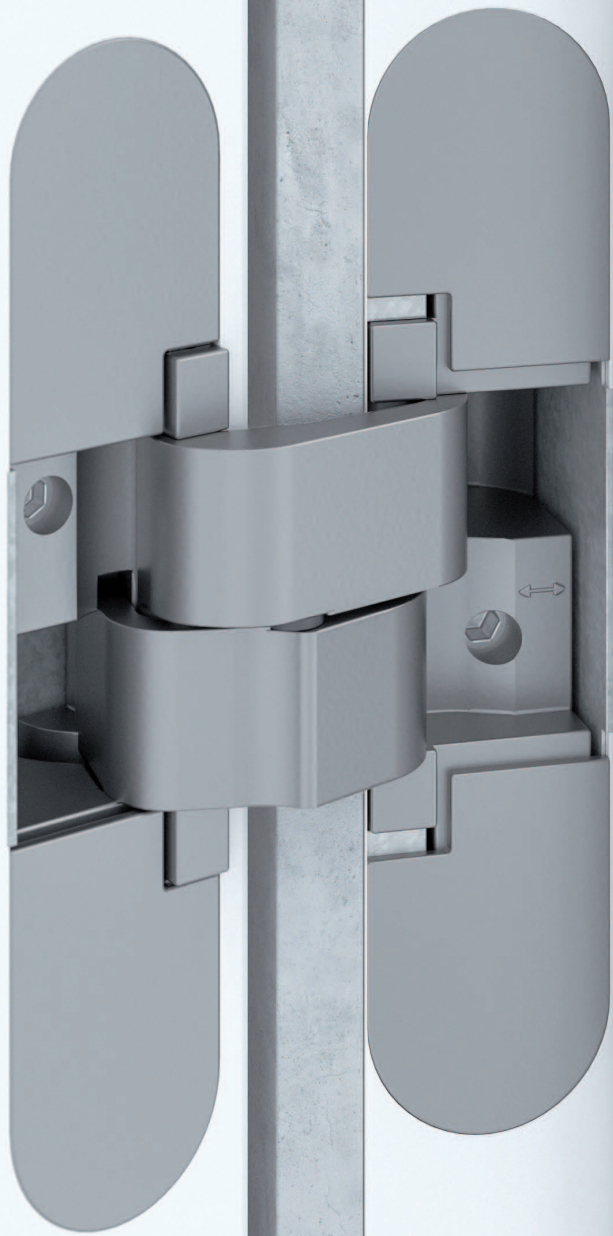
**i** The load capacity mentioned above refers to the use of 2 hinges per door leaf (900 x 2100 mm).

Suggested screws:

Frame side: Countersunk head screws DIN 7505 A, Diameter 4.5 mm

Door side: Pan head screws DIN 7505 B, Diameter 4.5 mm





Hinge system AN 141 3D FVZ 12/38

## MODEL VERSIONS FOR DOORS WITH RECESSED FRAME FACINGS

- › 12 mm and 14 mm recessed frame facings
- › 38 - 45 mm door thicknesses
- › central milling
- › load capacities up to 60 kg
- › opening angle 180°

## AN 141 3D FVZ 12/38

for unrebeated 38 mm thick residential doors with 12 mm recessed frame facings up to 40 kg

hinge	recessed frame facings	up to 40 kg
-------	------------------------	-------------

### Product features

- FVZ = recessed frame facings
- recessed frame facings up to 12.0 mm
- door thickness 38 mm
- completely concealed hinge system
- for timber and aluminium frames
- for unrebeated residential doors
- 3D adjustable (side +/- 1.5 mm, height +/- 2.5 mm, compression +/- 1.0 mm)
- central installation
- material zamak/acetal

### Technical details

load capacity	<b>i</b> 2 hinges per door leaf (900x2100 mm)	40.0 kg
overall length		130.0 mm
width (frame)		28.0 mm
width (door)		30.0 mm
cutter diameter		14.0 or 16.0 mm
collar ring diameter		25.0 or 27.0 mm
opening angle		180°

### Finish

Satin Chrome (AN 014), Black (AN 018), Antique Bronze (AN 035), Aluminium Chrome (AN 036), Polished Brass (AN 037), Polished Chrome (AN 039), Satin Nickel (AN 044), RAL 9016 Traffic White (AN 049)

### Note

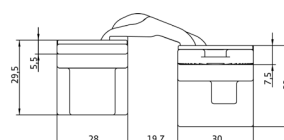
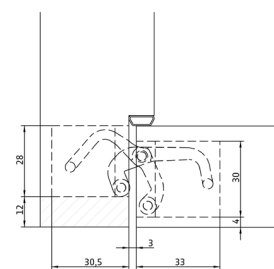
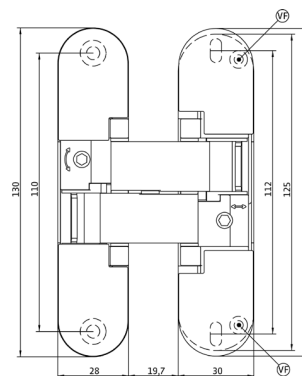
**i** The load capacity mentioned above refers to the use of 2 hinges per door leaf (900 x 2100 mm).

Suggested screws:

Frame side: Countersunk head screws DIN 7505 A, Diameter 5 mm

Door side: Pan head screws DIN 7505 B, Diameter 4 mm

If necessary, it is possible to lock the vertical adjustment of the hinge by means of a vertical adjustment screw (VF).





## AN 141 3D FVZ 12/45

for unrebated 45 mm thick residential doors with 12 mm recessed frame facings up to 40 kg

hinge	recessed frame facings	up to 40 kg
-------	------------------------	-------------

### Product features

- FVZ = recessed frame facings
- recessed frame facings up to 12.0 mm
- door thickness 45 mm
- completely concealed hinge system
- for timber and aluminium frames
- for unrebated residential doors
- 3D adjustable (side +/- 1.5 mm, height +/- 2.5 mm, compression +/- 1.0 mm)
- central installation
- material zamak/acetel

### Technical details

load capacity	<b>i</b> 2 hinges per door leaf (900x2100 mm)	40.0 kg
overall length		130.0 mm
width (frame)		28.0 mm
width (door)		37.0 mm
cutter diameter		14.0 or 16.0 mm
collar ring diameter		25.0 or 27.0 mm
opening angle		180°

### Finish

Satin Chrome (AN 014), Black (AN 018), Antique Bronze (AN 035), Aluminium Chrome (AN 036), Polished Brass (AN 037), Polished Chrome (AN 039), Satin Nickel (AN 044), RAL 9016 Traffic White (AN 049)

### Note

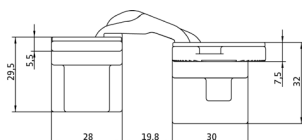
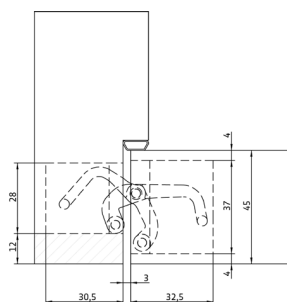
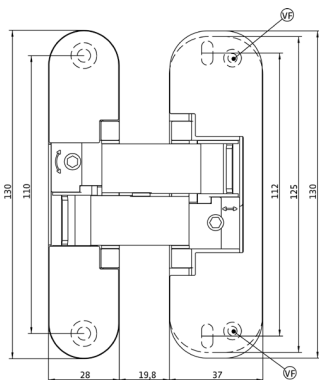
**i** The load capacity mentioned above refers to the use of 2 hinges per door leaf (900 x 2100 mm).

Suggested screws:

Frame side: Countersunk head screws DIN 7505 A, Diameter 5 mm

Door side: Pan head screws DIN 7505 B, Diameter 4 mm

If necessary, it is possible to lock the vertical adjustment of the hinge by means of a vertical adjustment screw (VF).



## AN 141 3D FVZ 14/40

for unrebeated 40 mm thick residential doors with 14 mm recessed frame facings up to 40 kg

hinge	recessed frame facings	up to 40 kg
-------	------------------------	-------------

### Product features

- FVZ = recessed frame facings
- recessed frame facings up to 14.0 mm
- door thickness 40 mm
- completely concealed hinge system
- for timber and aluminium frames
- for unrebeated residential doors
- 3D adjustable (side +/- 1.5 mm, height +/- 2.5 mm, compression +/- 1.0 mm)
- central installation
- material zamak/acetal

### Technical details

load capacity	<b>i</b> 2 hinges per door leaf (900x2100 mm)	40.0 kg
overall length		144.0 mm
width (frame)		30.0 mm
width (door)		30.0 mm
cutter diameter		14.0 or 16.0 mm
collar ring diameter		25.0 or 27.0 mm
opening angle		180°

### Finish

Satin Chrome (AN 014), Black (AN 018), Antique Bronze (AN 035), Aluminium Chrome (AN 036), Polished Brass (AN 037), Polished Chrome (AN 039), Satin Nickel (AN 044), RAL 9016 Traffic White (AN 049)

### Note

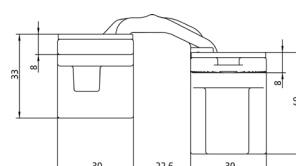
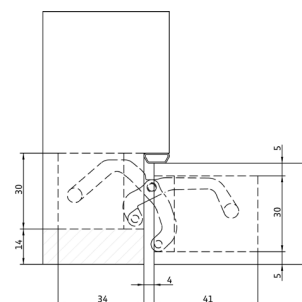
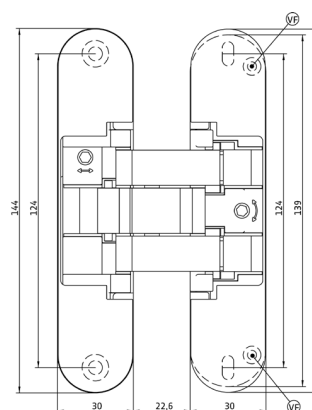
**i** The load capacity mentioned above refers to the use of 2 hinges per door leaf (900 x 2100 cm).

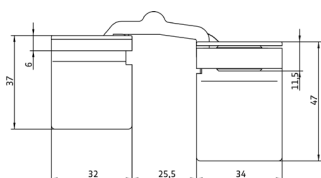
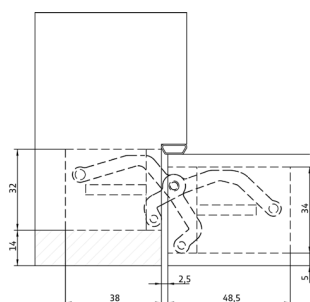
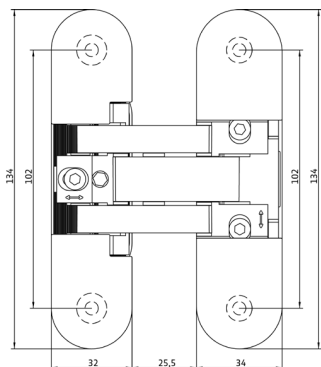
Suggested screws:

Frame side: Countersunk head screws DIN 7505 A, Diameter 5 mm

Door side: Pan head screws DIN 7505 B, Diameter 4 mm

If necessary, it is possible to lock the vertical adjustment of the hinge by means of a vertical adjustment screw (VF).





## AN 141 3D FVZ 14/44

for unrebbated 44 mm thick residential doors with 14 mm recessed frame facings up to 40 kg

hinge	recessed frame facings	up to 40 kg
-------	------------------------	-------------

### Product features

- FVZ = recessed frame facings
- with recessed frame facings up to 14.0 mm
- door thickness 44 mm
- completely concealed hinge system
- for timber and aluminium frames
- for unrebbated residential doors
- 3D adjustable (side +/- 1.0 mm, height +/- 1.5 mm, compression +/- 1.0 mm)
- central installation
- material zamak

### Technical details

load capacity	<b>i</b> 2 hinges per door leaf (900x2100 mm)	40.0 kg
overall length		134.0 mm
width (frame)		32.0 mm
width (door)		34.0 mm
cutter diameter		14.0 or 16.0 mm
collar ring diameter		25.0 or 27.0 mm
opening angle		180°

### Finish

Satin Chrome (AN 014), Black (AN 018), Polished Brass (AN 037), Polished Chrome (AN 039), Satin Nickel (AN 044), RAL 9016 Traffic White (AN 049)

### Note

**i** The load capacity mentioned above refers to the use of 2 hinges per door leaf (900 x 2100 mm).

Suggested screws:

Frame side: Countersunk head screws DIN 7505 A, Diameter 5 mm

Door side: Countersunk head screws DIN 7505 A, Diameter 5 mm

## AN 161 3D FVZ 12/38

for unrebeated 38 mm thick residential doors with 12 mm recessed frame facings up to 60 kg

hinge	recessed frame facings	up to 60 kg
-------	------------------------	-------------

### Product features

- FVZ = recessed frame facings
- recessed frame facings up to 12.0 mm
- door thickness 38 mm
- completely concealed hinge system
- for timber and aluminium frames
- for unrebeated residential doors
- 3D adjustable (side +/- 1.5 mm, height +/- 2.5 mm, compression +/- 1.0 mm)
- central installation
- material zamak

### Technical details

load capacity	<b>i</b> 2 hinges per door leaf (900x2100 mm)	60.0 kg
overall length		130.0 mm
width (frame)		28.0 mm
width (door)		30.0 mm
cutter diameter		14.0 or 16.0 mm
collar ring diameter		25.0 or 27.0 mm
opening angle		180°

### Finish

Satin Chrome (AN 014), Black (AN 018), Antique Bronze (AN 035), Aluminium Chrome (AN 036), Polished Brass (AN 037), Polished Chrome (AN 039), Satin Nickel (AN 044), RAL 9016 Traffic White (AN 049)

### Note

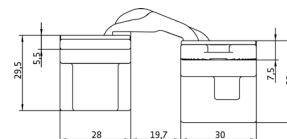
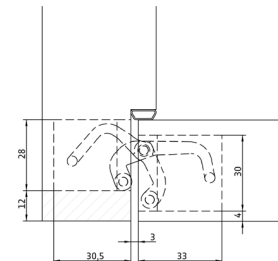
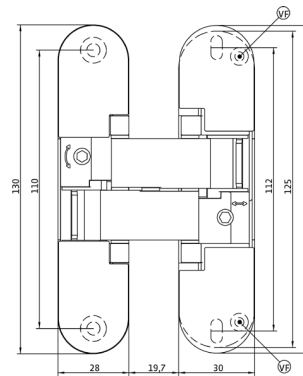
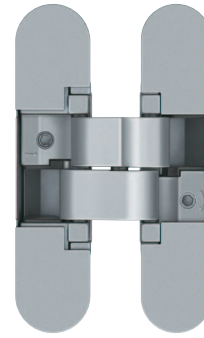
**i** The load capacity mentioned above refers to the use of 2 hinges per door leaf (900 x 2100 mm).

Suggested screws:

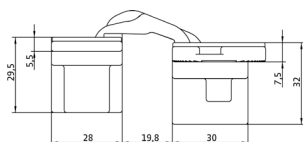
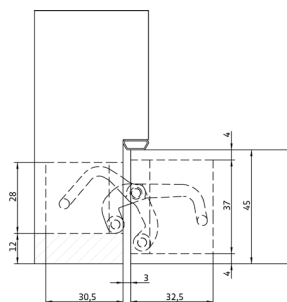
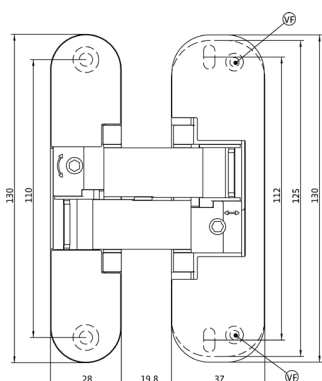
Frame side: Countersunk head screws DIN 7505 A, Diameter 5 mm

Door side: Pan head screws DIN 7505 B, Diameter 4 mm

If necessary, it is possible to lock the vertical adjusment of the hinge by means of a vertical adjustment screw (VF).







## AN 161 3D FVZ 12/45

for unrebbated 45 mm thick residential doors with 12 mm recessed frame facings up to 60 kg

hinge	recessed frame facings	up to 60 kg
-------	------------------------	-------------

### Product features

- FVZ = recessed frame facings
- recessed frame facings up to 12.0 mm
- door thickness 45 mm
- completely concealed hinge system
- for timber and aluminium frames
- for unrebbated residential doors
- 3D adjustable (side +/- 1.5 mm, height +/- 2.5 mm, compression +/- 1.0 mm)
- central installation
- material zamak

### Technical details

load capacity	<b>i</b> 2 hinges per door leaf (900x2100 mm)	60.0 kg
overall length		130.0 mm
width (frame)		28.0 mm
width (door)		37.0 mm
cutter diameter		14.0 or 16.0 mm
collar ring diameter		25.0 or 27.0 mm
opening angle		180°

### Finish

Satin Chrome (AN 014), Black (AN 018), Antique Bronze (AN 035), Aluminium Chrome (AN 036), Polished Brass (AN 037), Polished Chrome (AN 039), Satin Nickel (AN 044), RAL 9016 Traffic White (AN 049)

### Note

**i** The load capacity mentioned above refers to the use of 2 hinges per door leaf (900 x 2100 mm).

Suggested screws:

Frame side: Countersunk head screws DIN 7505 A, Diameter 5 mm

Door side: Pan head screws DIN 7505 B, Diameter 4 mm

If necessary, it is possible to lock the vertical adjustment of the hinge by means of a vertical adjustment screw (VF).

## AN 161 3D FVZ 14/40

for unrebeated 40 mm thick residential doors with 14 mm recessed frame facings up to 60 kg

hinge	recessed frame facings	up to 60 kg
-------	------------------------	-------------

### Product features

- FVZ = recessed frame facings
- recessed frame facings up to 14.0 mm
- door thickness 40 mm
- completely concealed hinge system
- for timber and aluminium frames
- for unrebeated residential doors
- 3D adjustable (side +/- 1.5 mm, height +/- 2.5 mm, compression +/- 1.0 mm)
- central installation
- material zamak

### Technical details

load capacity	<b>i</b> 2 hinges per door leaf (900x2100 mm)	60.0 kg
overall length		144.0 mm
width (frame)		30.0 mm
width (door)		30.0 mm
cutter diameter		14.0 or 16.0 mm
collar ring diameter		25.0 or 27.0 mm
opening angle		180°

### Finish

Satin Chrome (AN 014), Black (AN 018), Antique Bronze (AN 035), Aluminium Chrome (AN 036), Polished Brass (AN 037), Polished Chrome (AN 039), Satin Nickel (AN 044), RAL 9016 Traffic White (AN 049)

### Note

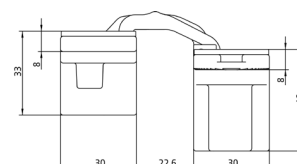
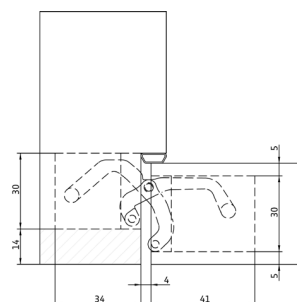
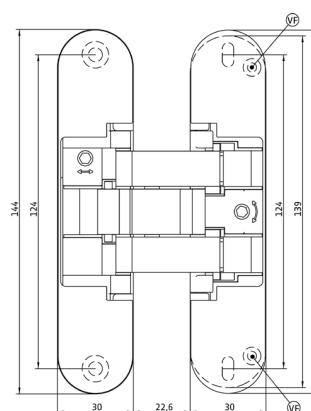
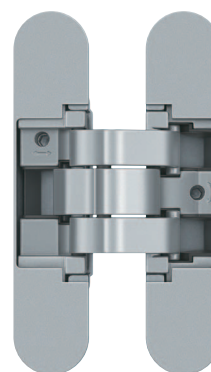
**i** The load capacity mentioned above refers to the use of 2 hinges per door leaf (900 x 2100 mm).

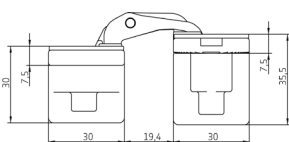
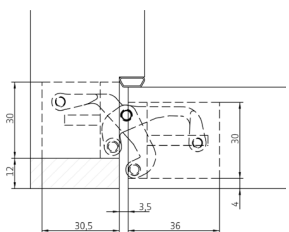
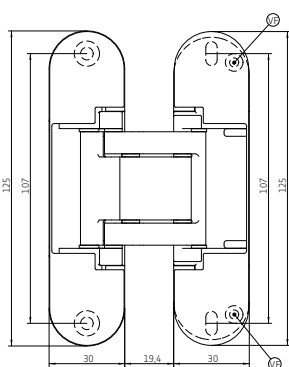
Suggested screws:

Frame side: Countersunk head screws DIN 7505 A, Diameter 5 mm

Door side: Pan head screws DIN 7505 B, Diameter 4 mm

If necessary, it is possible to lock the vertical adjustment of the hinge by means of a vertical adjustment screw (VF).





## AN 164 3D FVZ 12/38

for unrebated 38 mm residential doors with 12 mm recessed frame facings up to 60 kg

hinge	recessed frame facings	up to 60 kg
-------	------------------------	-------------

### Product features

- FVZ = recessed frame facings
- recessed frame facings up to 12.0 mm
- door thickness 38 mm
- completely concealed hinge system
- for timber and aluminium frames
- for unrebated residential doors
- 3D adjustable (side +/- 1.5 mm, height +/- 2.5 mm, compression +/- 1.0 mm)
- central installation
- material zamak

### Technical details

load capacity	<b>i</b> 2 hinges per door leaf (900x2100 mm)	60.0 kg
overall length		125.0 mm
width (frame)		30.0 mm
width (door)		30.0 mm
cutter diameter		14.0 or 16.0 mm
collar ring diameter		25.0 or 27.0 mm
opening angle		180°

### Finish

Rustic Umber (AN 012), Satin Chrome (AN 014), Light Bronze (AN 016), Black (AN 018), Antique Bronze (AN 035), Aluminium Chrome (AN 036), Polished Brass (AN 037), Polished Chrome (AN 039), Satin Nickel (AN 044), RAL 9016 Traffic White (AN 049), Anthracite (AN 050), Medium Bronze (AN 051), Copper (AN 052)

### Note

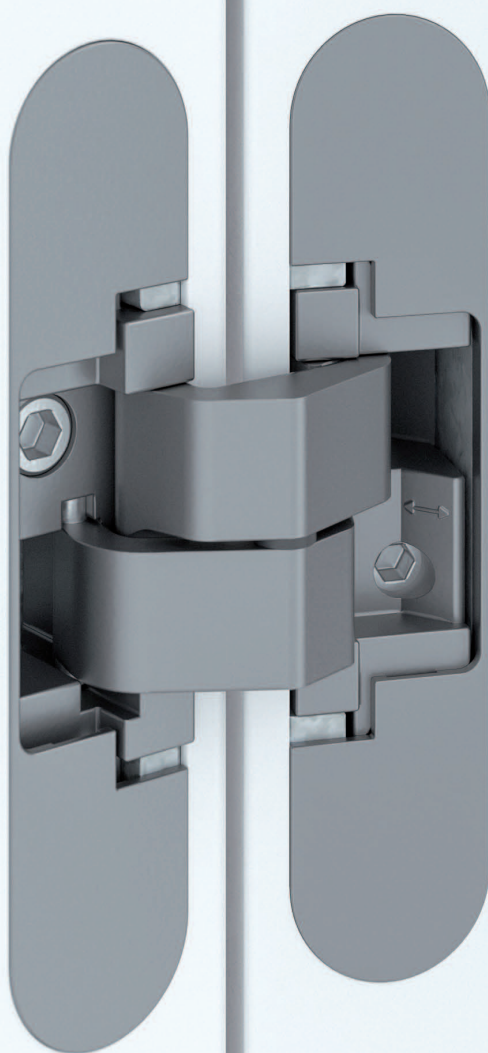
**i** The load capacity mentioned above refers to the use of 2 hinges per door leaf (900 x 2100 mm).

Suggested screws:

Frame side: Countersunk head screws DIN 7505 A, Diameter 5 mm

Door side: Pan head screws DIN 7505 B, Diameter 4 mm

If necessary, it is possible to lock the vertical adjustment of the hinge by means of a vertical adjustment screw (VF).



Hinge system AN 150 3D

## MODEL VERSIONS FOR DOORS WITH REDUCED FRAME MILLING

- › reduced hinge frame part
- › versions for aluminium framed doors
- › load capacities up to 60 kg
- › opening angle 180°

## AN 130 2D

for unrebated residential doors with 21 mm reduced hinge frame part up to 20 kg

hinge	21 mm hinge frame part	up to 20 kg
-------	------------------------	-------------

### Product features

- reduced hinge frame part 21 mm
- completely concealed hinge system
- for timber and aluminium frames
- for unrebated residential doors
- 2D adjustable (height +/- 1.5 mm, compression +/- 1.0 mm)
- material zamak/IXEF

### Technical details

load capacity	<b>i</b> 2 hinges per door leaf (900x2100 mm)	20.0 kg
overall length		110.0 mm
width (frame)		24.0 mm
width (door)		24.0 mm
cutter diameter		14.0 or 16.0 mm
collar ring diameter		25.0 or 27.0 mm
opening angle		180°

### Finish

Satin Chrome (AN 014), Black (AN 018), RAL 9016 Traffic White (AN 049)

### Combination

receiver	casing frame	AN 140 3D FZ
----------	--------------	--------------

### Note

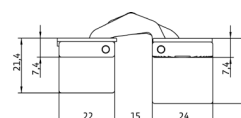
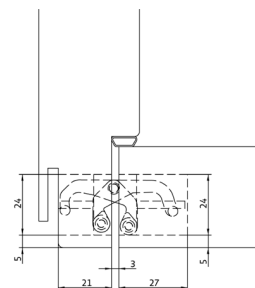
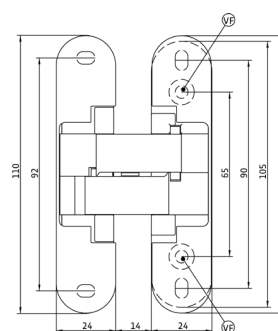
**i** The load capacity mentioned above refers to the use of 2 hinges per door leaf (900 x 2100 mm).

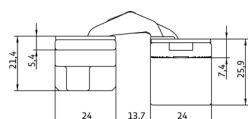
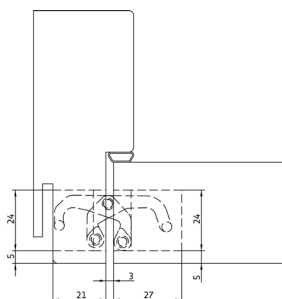
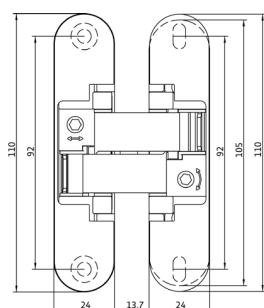
Suggested screws:

Frame side: Countersunk head screws DIN 7505 A, Diameter 4.5 mm

Door side: Countersunk head screws DIN 7505 A, Diameter 4.5 mm

If necessary, it is possible to lock the vertical adjustment of the hinge by means of a vertical adjustment screw (VF).





## AN 150 3D

for unrebated residential doors with 21 mm reduced hinge frame part up to 40 kg

hinge	21 mm hinge frame part	up to 40 kg
-------	------------------------	-------------

### Product features

- reduced hinge frame part 21 mm
- completely concealed hinge system
- for timber and aluminium frames
- for unrebated residential doors
- 3D adjustable (side +/- 1.5 mm, height +/- 2.5 mm, compression +/- 1.0 mm)
- material zamak/ acetal

### Technical details

load capacity	<b>i</b> 2 hinges per door leaf (900x2100 mm)	40.0 kg
overall length		110.0 mm
width (frame)		24.0 mm
width (door)		24.0 mm
cutter diameter		14.0 or 16.0 mm
collar ring diameter		25.0 or 27.0 mm
opening angle		180°

### Finish

Satin Chrome (AN 014), Black (AN 018), Antique Bronze (AN 035), Aluminium Chrome (AN 036), Polished Brass (AN 037), Polished Chrome (AN 039), Satin Nickel (AN 044), RAL 9016 Traffic White (AN 049)

### Combination

receiver	casing frame	AN 140 3D FZ
----------	--------------	--------------

### Note

**i** The load capacity mentioned above refers to the use of 2 hinges per door leaf (900 x 2100 mm).

Suggested screws:

Frame side: Countersunk head screws DIN 7505 A, Diameter 4.5 mm

Door side: Pan head screws DIN 7505 B, Diameter 4.5 mm

## AN 150 3D ALU

for unrebated residential doors with aluminium frames and 21 mm reduced hinge frame part up to 40 kg

hinge	21 mm hinge frame part	up to 40 kg
-------	------------------------	-------------

### Product features

- reduced hinge frame part 21 mm
- completely concealed hinge system
- for timber and aluminium frames
- for unrebated residential doors with aluminium frames
- 3D adjustable (side +/- 1.5 mm, height +/- 1.5 mm, compression +/- 1.0 mm)
- material zamak/ acetal

### Technical details

load capacity	<b>i</b> 2 hinges per door leaf (900x2100 mm)	40.0 kg
overall length		110.0 mm
width (frame)		24.0 mm
width (door)		24.0 mm
cutter diameter		14.0 or 16.0 mm
collar ring diameter		25.0 or 27.0 mm
opening angle		180°

### Finish

Satin Chrome (AN 014), Black (AN 018), Antique Bronze (AN 035), Aluminium Chrome (AN 036), Polished Brass (AN 037), Polished Chrome (AN 039), Satin Nickel (AN 044), RAL 9016 Traffic White (AN 049)

### Combination

receiver	casing frame	AN 140 3D FZ
----------	--------------	--------------

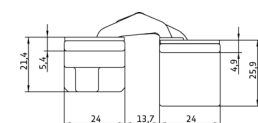
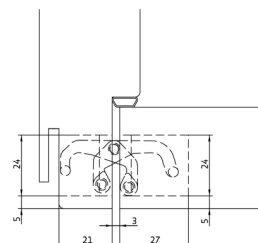
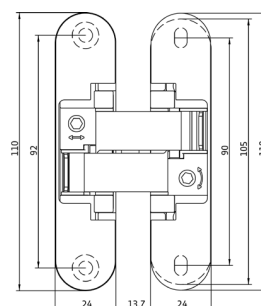
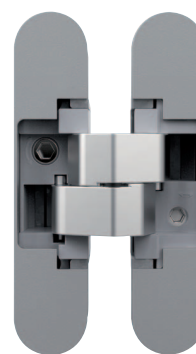
### Note

**i** The load capacity mentioned above refers to the use of 2 hinges per door leaf (900 x 2100 mm).

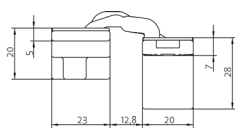
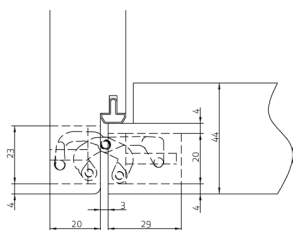
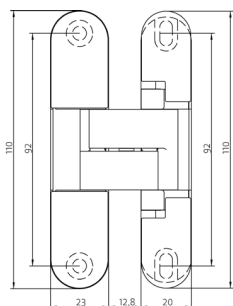
Suggested screws:

Frame side: Countersunk head screws DIN 7505 A, Diameter 4.5 mm

Door side: Countersunk head screws DIN 7505 A, Diameter 4.5 mm







## AN 150 3D 28

for flush rebated 28 mm residential doors with 20 mm reduced hinge frame part up to 40 kg

<b>Hinge</b>	<b>20 mm hinge frame part</b>	<b>up to 40 kg</b>
--------------	-------------------------------	--------------------

### Product features

- reduced hinge frame part 20 mm
- door thickness 28 mm
- completely concealed hinge system
- for timber and aluminium frames
- for flush rebated residential doors
- 3D adjustable (side +/- 1.5 mm, height +/- 2.5 mm, compression +/- 1.0 mm)
- central installation
- material zamak

### Technical details

load capacity	<b>i</b> 2 hinges per door leaf (900x2100 mm)	40.0 kg
overall length		110.0 mm
width (frame part)		23.0 mm
width (door part)		20.0 mm
cutter diameter		14.0 or 16.0
collar ring diameter		25.0 or 27.0
opening angle		180°

### Finish

Satin Chrome (AN 014), Black (AN 018), Antique Bronze (AN 035), Aluminium Chrome (AN 036), Polished Brass (AN 037), Polished Chrome (AN 039), Satin Nickel (AN 044), RAL 9016 Traffic White (AN 049)

### Combination

receiver	casing frame	AN 140 3D FZ
----------	--------------	--------------

### Note

**i** The load capacity mentioned above refers to the use of 2 hinges per door leaf (900 x 2100 mm).

Suggested screws:

Frame side: Countersunk head screw DIN 7505 A, Diameter 4.5 mm

Door side: Pan head screw DIN 7505 B, Diameter 4.5 mm

## AN 150 3D 40

for unrebated 40 mm residential doors with central installation and 21 mm reduced hinge frame part up to 40 kg

hinge	21 mm hinge frame part	up to 40 kg
-------	------------------------	-------------

### Product features

- reduced hinge frame part 21 mm
- door thickness 40 mm
- completely concealed hinge system
- for timber and aluminium frames
- for unrebated residential doors
- 3D adjustable (side +/- 1.5 mm, height +/- 2.5 mm, compression +/- 1.0 mm)
- central installation
- material zamak/acetal

### Technical details

load capacity	<b>i</b> 2 hinges per door leaf (900x2100 mm)	40.0 kg
overall length		110.0 mm
width (frame)		24.0 mm
width (door)		30.0 mm
cutter diameter		14.0 or 16.0 mm
collar ring diameter		25.0 or 27.0 mm
opening angle		180°

### Finish

Satin Chrome (AN 014), Black (AN 018), Antique Bronze (AN 035), Aluminium Chrome (AN 036), Polished Brass (AN 037), Polished Chrome (AN 039), Satin Nickel (AN 044), RAL 9016 Traffic White (AN 049)

### Combination

receiver	casing frame	AN 140 3D FZ
----------	--------------	--------------

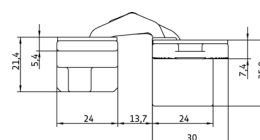
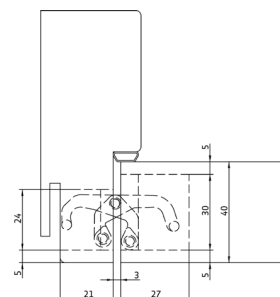
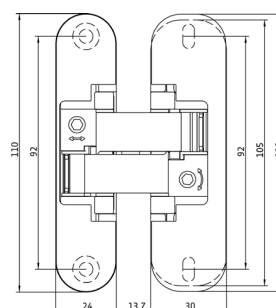
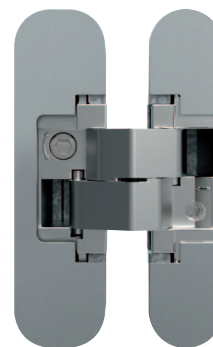
### Note

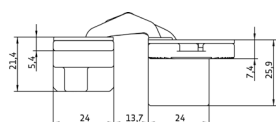
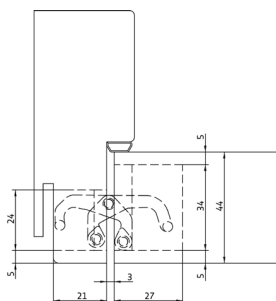
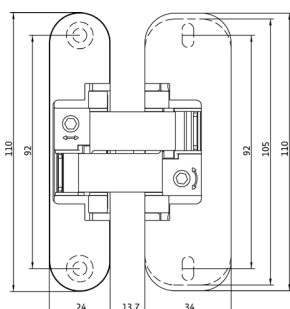
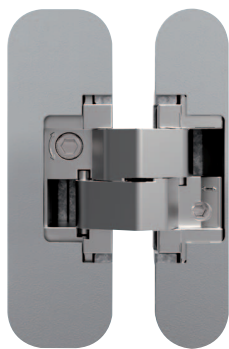
**i** The load capacity mentioned above refers to the use of 2 hinges per door leaf (900 x 2100 mm).

Suggested screws:

Frame side: Countersunk head screws DIN 7505 A, Diameter 4.5 mm

Door side: Pan head screw DIN 7505 B, Diameter 4.5 mm





## AN 150 3D 44

for unrebbated 44 mm residential doors with central installation and 21 mm reduced hinge frame part up to 40 kg

hinge	21 mm hinge frame part	up to 40 kg
-------	------------------------	-------------

### Product features

- reduced hinge frame part 21 mm
- door thickness 44 mm
- completely concealed hinge system
- for timber and aluminium frames
- for unrebbated residential doors
- 3D adjustable (side +/- 1.5 mm, height +/- 2.5 mm, compression +/- 1.0 mm)
- central installation
- material zamak/ acetal

### Technical details

load capacity	<b>i</b> 2 hinges per door leaf (900x2100 mm)	40.0 kg
overall length		110.0 mm
width (frame)		24.0 mm
width (door)		34.0 mm
cutter diameter		14.0 or 16.0 mm
collar ring diameter		25.0 or 27.0 mm
opening angle		180°

### Finish

Satin Chrome (AN 014), Black (AN 018), Antique Bronze (AN 035), Aluminium Chrome (AN 036), Polished Brass (AN 037), Polished Chrome (AN 039), Satin Nickel (AN 044), RAL 9016 Traffic White (AN 049)

### Combination

receiver	casing frame	AN 140 3D FZ
----------	--------------	--------------

### Note

**i** The load capacity mentioned above refers to the use of 2 hinges per door leaf (900 x 2100 mm).

Suggested screws:

Frame side: Countersunk head screws DIN 7505 A, Diameter 4.5 mm

Door side: Pan head screw DIN 7505 B, Diameter 4.5 mm

## AN 170 3D

for unrebated residential doors with 21 mm reduced hinge frame part up to 60 kg

hinge	21 mm hinge frame part	up to 60 kg
-------	------------------------	-------------

### Product features

- reduced hinge frame part 21 mm
- completely concealed hinge system
- for timber and aluminium frames
- for unrebated residential doors
- 3D adjustable (side +/- 1.5 mm, height +/- 2.5 mm, compression +/- 1.0 mm)
- material zamak

### Technical details

load capacity	<b>i</b> 2 hinges per door leaf (900x2100 mm)	60.0 kg
overall length		110.0 mm
width (frame)		24.0 mm
width (door)		24.0 mm
cutter diameter		14.0 or 16.0 mm
collar ring diameter		25.0 or 27.0 mm
opening angle		180°

### Finish

Rustic Umber (AN 012), Satin Chrome (AN 014), Light Bronze (AN 016), Black (AN 018), Antique Bronze (AN 035), Aluminium Chrome (AN 036), Polished Brass (AN 037), Polished Chrome (AN 039), Satin Nickel (AN 044), RAL 9016 Traffic White (AN 049), Anthracite (AN 050), Medium Bronze (AN 051), Copper (AN 052)

### Combination

receiver	casing frame	AN 140 3D FZ
----------	--------------	--------------

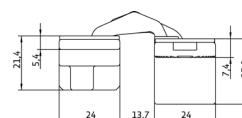
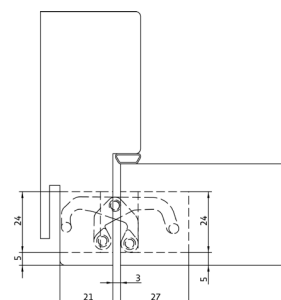
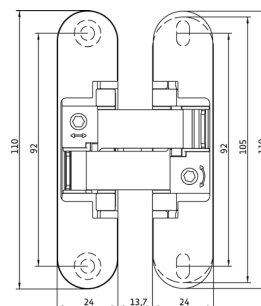
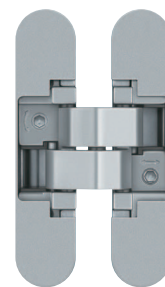
### Note

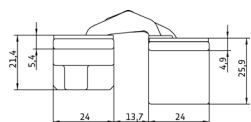
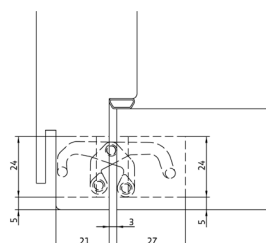
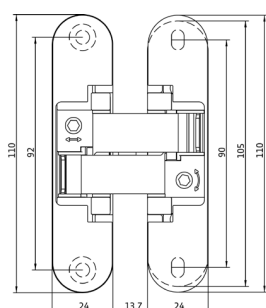
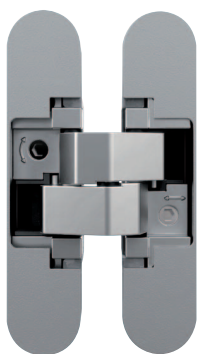
**i** The load capacity mentioned above refers to the use of 2 hinges per door leaf (900 x 2100 mm).

Suggested screws:

Frame side: Countersunk head screws DIN 7505 A, Diameter 4.5 mm

Door side: Pan head screws DIN 7505 B, Diameter 4.5 mm





## AN 170 3D ALU

for unrebated residential doors with aluminium frames and 21 mm reduced hinge frame part up to 60 kg

hinge	21 mm hinge frame part	up to 60 kg
-------	------------------------	-------------

### Product features

- reduced hinge frame part 21 mm
- completely concealed hinge system
- for timber and aluminium frames
- for unrebated residential doors with aluminium frames
- 3D adjustable (side +/- 1.5 mm, height +/- 1.5 mm, compression +/- 1.0 mm)
- material zamak

### Technical details

load capacity	<b>i</b> 2 hinges per door leaf (900x2100 mm)	60.0 kg
overall length		110.0 mm
width (frame)		24.0 mm
width (door)		24.0 mm
cutter diameter		14.0 or 16.0 mm
collar ring diameter		25.0 or 27.0 mm
opening angle		180°

### Finish

Satin Chrome (AN 014), Black (AN 018), Antique Bronze (AN 035), Aluminium Chrome (AN 036), Polished Brass (AN 037), Polished Chrome (AN 039), Satin Nickel (AN 044), RAL 9016 Traffic White (AN 049)

### Combination

receiver	casing frame	AN 140 3D FZ
----------	--------------	--------------

### Note

**i** The load capacity mentioned above refers to the use of 2 hinges per door leaf (900 x 2100 mm).

Suggested screws:

Frame side: Countersunk head screws DIN 7505 A, Diameter 4.5 mm

Door side: Countersunk head screws DIN 7505 A, Diameter 4.5 mm

## AN 170 3D 40

for unrebated 40 mm residential doors with central installation and 21 mm reduced hinge frame part up to 60 kg

hinge	21 mm hinge frame part	up to 60 kg
-------	------------------------	-------------

### Product features

- reduced hinge frame part 21 mm
- door thickness 40 mm
- for timber and aluminium frames
- completely concealed hinge system
- for unrebated residential doors
- 3D adjustable (side +/- 1.5 mm, height +/- 2.5 mm, compression +/- 1.0 mm)
- central installation
- material zamak

### Technical details

load capacity	<b>i</b> 2 hinges per door leaf (900x2100 mm)	60.0 kg
overall length		110.0 mm
width (frame)		24.0 mm
width (door)		30.0 mm
cutter diameter		14.0 or 16.0 mm
collar ring diameter		25.0 or 27.0 mm
opening angle		180°

### Finish

Satin Chrome (AN 014), Black (AN 018), Antique Bronze (AN 035), Aluminium Chrome (AN 036), Polished Brass (AN 037), Polished Chrome (AN 039), Satin Nickel (AN 044), RAL 9016 Traffic White (AN 049)

### Combination

receiver	casing frame	AN 140 3D FZ
----------	--------------	--------------

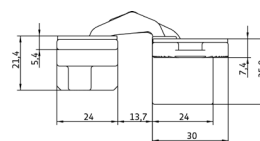
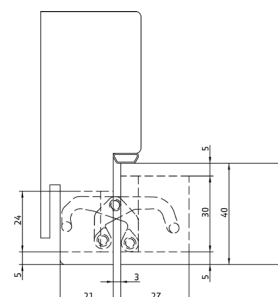
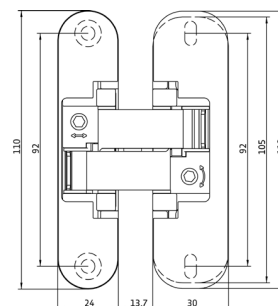
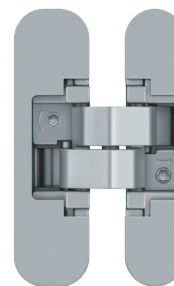
### Note

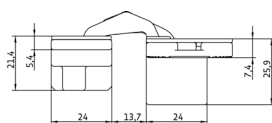
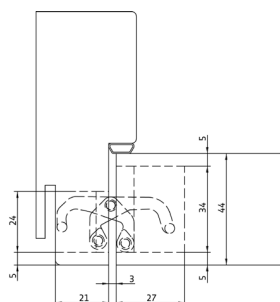
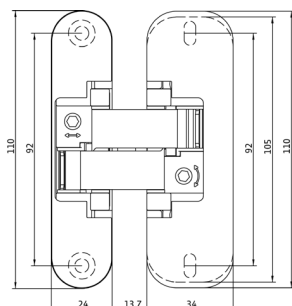
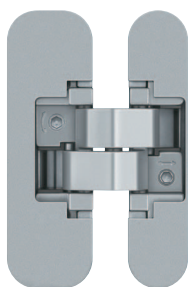
**i** The load capacity mentioned above refers to the use of 2 hinges per door leaf (900 x 2100 mm).

Suggested screws:

Frame side: Countersunk head screws DIN 7505 A, Diameter 4.5 mm

Door side: Pan head screws DIN 7505 B, Diameter 4.5 mm





## AN 170 3D 44

for unrebeated 44 mm residential doors with central installation and 21 mm reduced hinge frame part up to 60 kg

hinge	21 mm hinge frame part	up to 60 kg
-------	------------------------	-------------

### Product features

- reduced hinge frame part 21 mm
- door thickness 44 mm
- completely concealed hinge system
- for timber and aluminium frames
- for unrebeated residential doors
- 3D adjustable (side +/- 1.5 mm, height +/- 2.5 mm, compression +/- 1.0 mm)
- central installation
- material zamak

### Technical details

load capacity	<b>i</b> 2 hinges per door leaf (900x2100 mm)	60.0 kg
overall length		110.0 mm
width (frame)		24.0 mm
width (door)		34.0 mm
cutter diameter		14.0 or 16.0 mm
collar ring diameter		25.0 or 27.0 mm
opening angle		180°

### Finish

Satin Chrome (AN 014), Black (AN 018), Antique Bronze (AN 035), Aluminium Chrome (AN 036), Polished Brass (AN 037), Polished Chrome (AN 039), Satin Nickel (AN 044), RAL 9016 Traffic White (AN 049)

### Combination

receiver	casing frame	AN 140 3D FZ
----------	--------------	--------------

### Note

**i** The load capacity mentioned above refers to the use of 2 hinges per door leaf (900 x 2100 mm).

Suggested screws:

Frame side: Countersunk head screws DIN 7505 A, Diameter 4.5 mm

Door side: Pan head screws DIN 7505 B, Diameter 4.5 mm

## AN 172 3D

for unrebated 38-45 mm residential doors with 21 mm reduced hinge frame part  
up to 60 kg and claddings up to 4 mm

hinge	21 mm hinge frame part	up to 60 kg
-------	------------------------	-------------

### Product features

- reduced hinge frame part 21 mm
- door thickness 38-45 mm
- possible installation of claddings up to 4 mm
- completely concealed hinge system
- for timber and aluminium frames
- for unrebated residential doors
- 3D adjustable (side +/- 1.5 mm, height +/- 2.5 mm, compression +/- 1.0 mm)
- material zamak

### Technical details

load capacity	<b>i</b> 2 hinges per door leaf (900x2100 mm)	60.0 kg
overall length		125.0 mm
width (frame)		30.0 mm
width (door)		30.0 mm
cutter diameter		14.0 or 16.0 mm
collar ring diameter		25.0 or 27.0 mm
opening angle		180°

### Finish

Rustic Umber (AN 012), Satin Chrome (AN 014), Light Bronze (AN 016), Black (AN 018), Antique Bronze (AN 035), Aluminium Chrome (AN 036), Polished Brass (AN 037), Polished Chrome (AN 039), Satin Nickel (AN 044), RAL 9016 Traffic White (AN 049), Anthracite (AN 050), Medium Bronze (AN 051), Copper (AN 052)

### Note

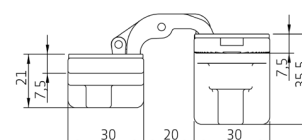
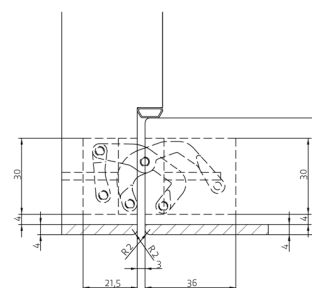
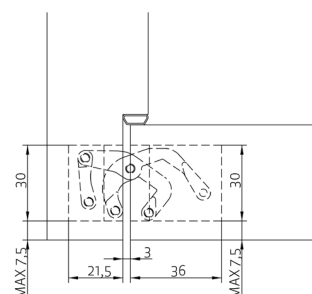
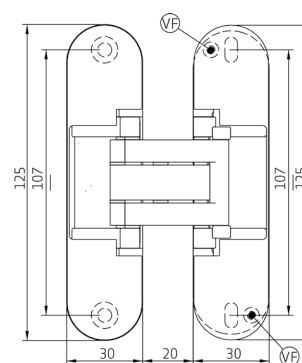
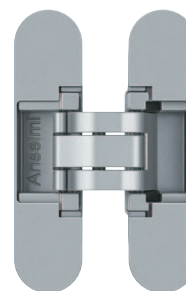
**i** The load capacity mentioned above refers to the use of 2 hinges per door leaf (900 x 2100 mm).

Suggested screws:

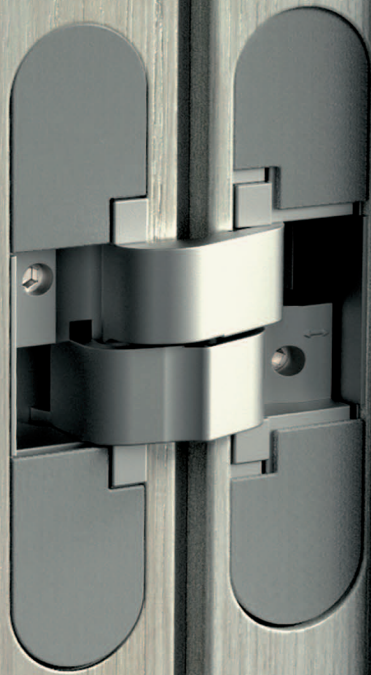
Frame side: Countersunk head screws DIN 7505 A, Diameter 4.5 mm

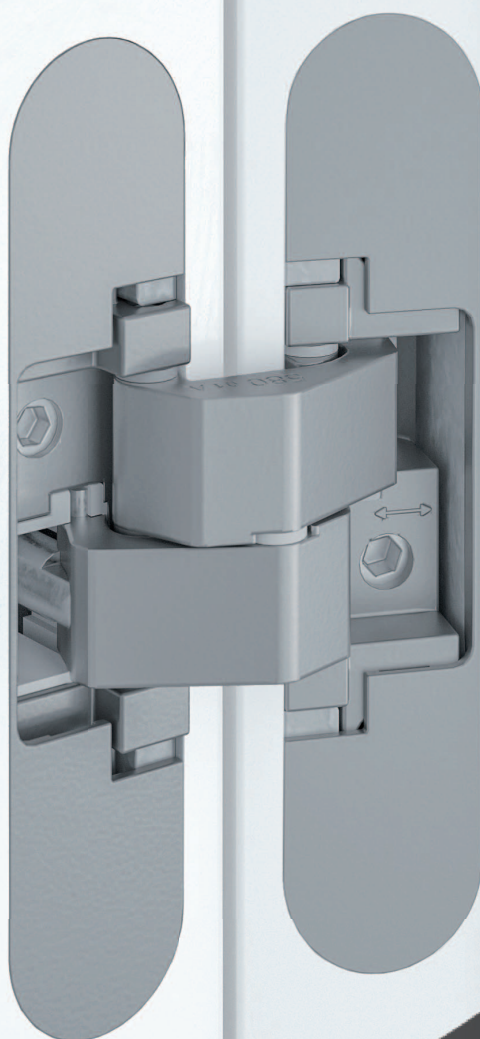
Door side: Pan head screws DIN 7505 B, Diameter 4.5 mm

If necessary, it is possible to lock the vertical adjustment of the hinge by means of a vertical adjustment fixing screw (VF).









Hinge system AN 108 3D SC45

## MODEL VERSIONS WITH INTEGRATED CLOSING FUNCTION

- › self closing hinge system
- › version with integrated damping function
- › closing power up to 60 kg
- › adjustable closing power when door is installed

## AN 107 3D C40

with integrated self closing function for unrebated residential doors

Hinge	unrebated	up to 40 kg
-------	-----------	-------------

### Product features

- self closing hinge system
- closing power from 20 kg up to 40 kg
- completely concealed hinge system
- for timber and aluminium frames
- for unrebated residential doors
- adjustable closing power when door is installed
- material zamak/steel

### Technical details

overall length	110.0 mm
width (frame part)	24.0 mm
width (door part)	24.0 mm
cutter diameter	14.0 or 16.0
collar ring diameter	25.0 or 27.0
opening angle	180°

### Finishes

Satin Chrome (AN 014), Black (AN 018), Antique Bronze (AN 035), Aluminium Chrome (AN 036), Polished Brass (AN 037), Polished Chrome (AN 039), Satin Nickel (AN 044), RAL 9016 Traffic White (AN 049)

### Combination

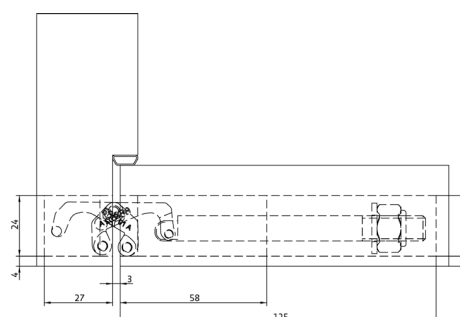
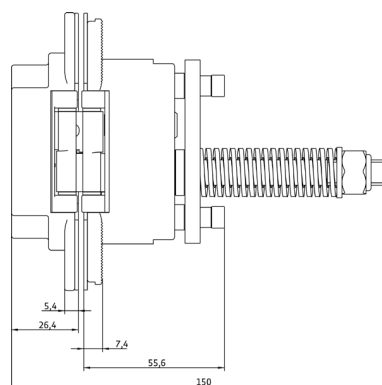
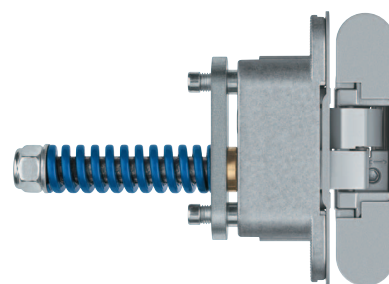
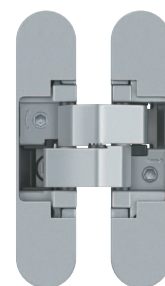
hinge	AN 140 3D
	AN 160 3D
receiver	casing frame
	AN 140 3D FZ

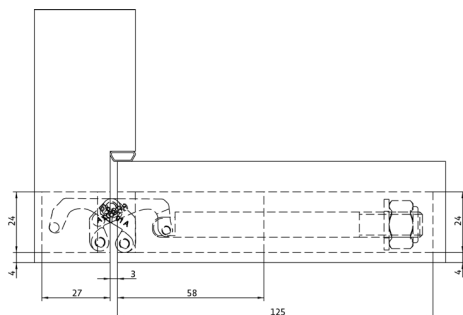
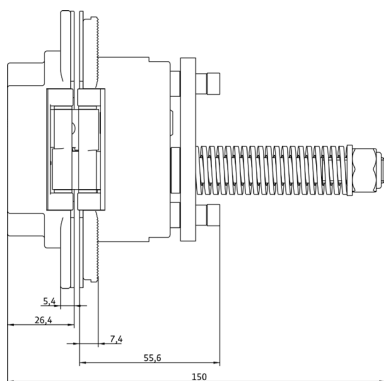
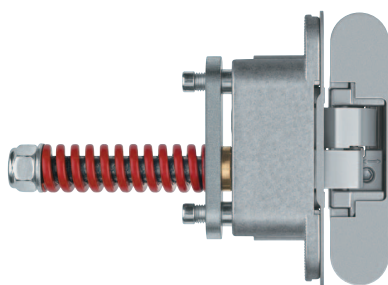
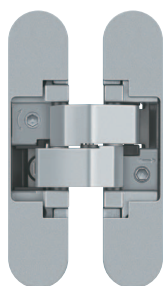
### Note

**i** The closing power mentioned above refers to the use of one self closing hinge per door leaf (900 x 2100 mm).

The self closing hinge has to be used only in combination with the given hinges and has to be installed at half the height of the door leaf, approximately at the same height of the lock (magnetic lock recommended).

The installation on doors subject to specific norms has to be verified by the customer according to the national law.





## AN 107 3D C60

with integrated self closing function for unrebated residential doors

<b>Hinge</b>	<b>unrebated</b>	<b>up to 60 kg</b>
--------------	------------------	--------------------

### Product features

- self closing hinge system
- closing power from 40 kg up to 60 kg
- completely concealed hinge system
- for timber and aluminium frames
- for unrebated residential doors
- adjustable closing power when door is installed
- material zamak/steel

### Technical details

overall length	110.0 mm
width (frame part)	24.0 mm
width (door part)	24.0 mm
cutter diameter	14.0 or 16.0
collar ring diameter	25.0 or 27.0
opening angle	180°

### Finishes

Satin Chrome (AN 014), Black (AN 018), Antique Bronze (AN 035), Aluminium Chrome (AN 036), Polished Brass (AN 037), Polished Chrome (AN 039), Satin Nickel (AN 044), RAL 9016 Traffic White (AN 049)

### Combination

hinge	AN 160 3D
	AN 180 3D
receiver	casing frame AN 140 3D FZ

### Note

**i** The closing power mentioned above refers to the use of one self closing hinge per door leaf (900 x 2100 mm).

The self closing hinge has to be used only in combination with the given hinges and has to be installed at half the height of the door leaf, approximately at the same height of the lock (magnetic lock recommended).

The installation on doors subject to specific norms has to be verified by the customer according to the national law.

## AN 108 3D SC45

with integrated self closing and damping function for unrebated residential doors

Hinge	unrebated	up to 45 kg
-------	-----------	-------------

### Product features

- self closing hinge system with integrated damping function
- closing power up to 45 kg
- completely concealed hinge system
- for timber and aluminium frames
- for unrebated residential doors
- adjustable closing power when door is installed
- material zamak/steel

### Technical details

overall length	110.0 mm
width (frame part)	24.0 mm
width (door part)	24.0 mm
cutter diameter	14.0 or 16.0
collar ring diameter	25.0 or 27.0
opening angle	180°

### Finishes

Satin Chrome (AN 014), Black (AN 018), Antique Bronze (AN 035), Aluminium Chrome (AN 036), Polished Brass (AN 037), Polished Chrome (AN 039), Satin Nickel (AN 044), RAL 9016 Traffic White (AN 049)

### Combination

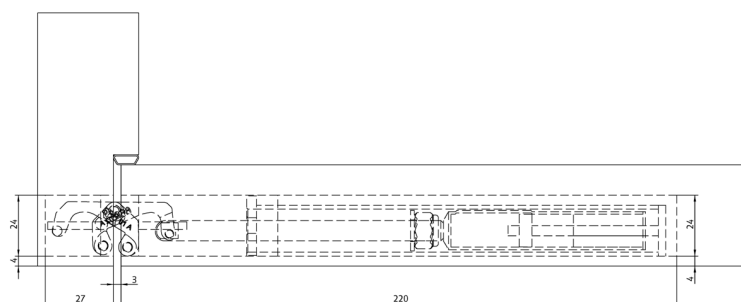
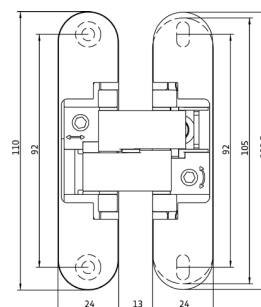
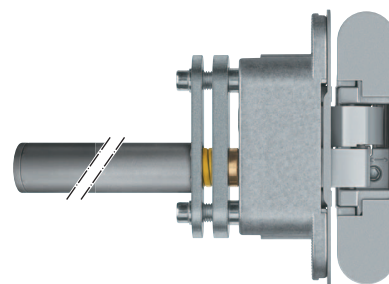
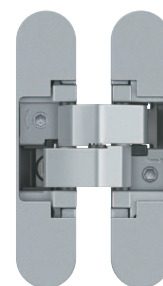
hinge	AN 140 3D
	AN 160 3D
receiver	casing frame
	AN 140 3D FZ

### Note

**i** The closing power mentioned above refers to the use of one self closing hinge per door leaf (900 x 2100 mm).

The self closing hinge has to be used only in combination with the given hinges and has to be installed at half the height of the door leaf, approximately at the same height of the lock (magnetic lock recommended).

The installation on doors subject to specific norms has to be verified by the customer according to the national law.









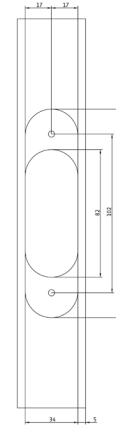
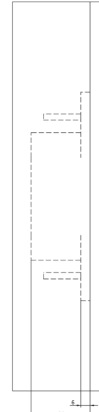
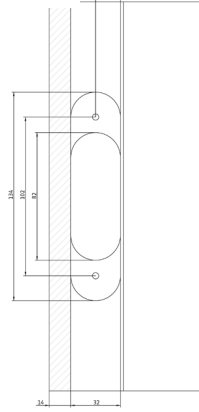


# ROUTING DATA

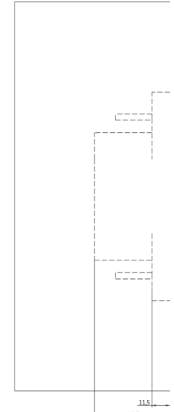
## AN 141 3D FVZ 14/44

Conduct routing with cutter  $\varnothing 14$  mm and collar ring  $\varnothing 25$  mm or with cutter  $\varnothing 16$  mm and collar ring  $\varnothing 27$  mm.

Milling frame



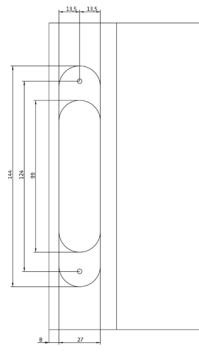
Milling door



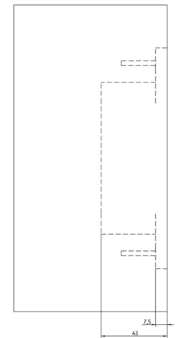
## AN 142 3D

Conduct routing with cutter  $\varnothing 14$  mm and collar ring  $\varnothing 25$  mm or with cutter  $\varnothing 16$  mm and collar ring  $\varnothing 27$  mm.

Milling frame



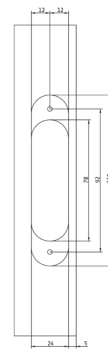
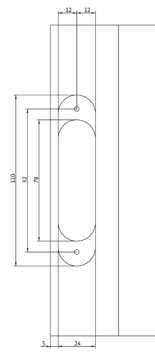
Milling door



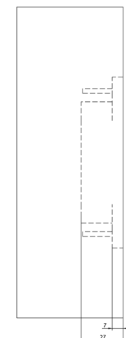
## AN 150 3D

Conduct routing with cutter  $\varnothing 14$  mm and collar ring  $\varnothing 25$  mm or with cutter  $\varnothing 16$  mm and collar ring  $\varnothing 27$  mm.

Milling frame

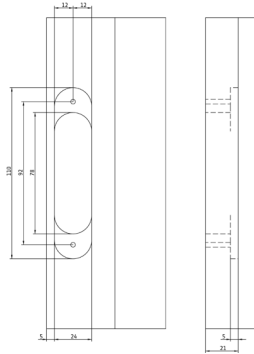


Milling door

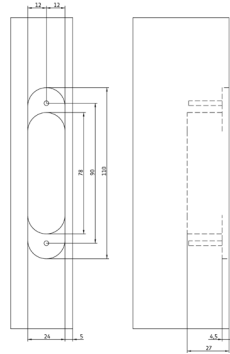


# ROUTING DATA

Milling  
frame



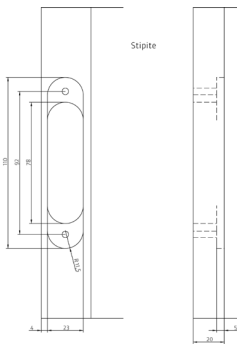
Milling  
door



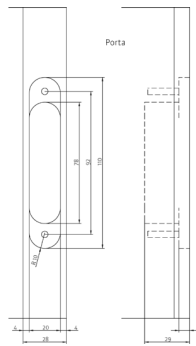
## AN 150 3D ALU

Conduct routing with cutter  $\varnothing$  14 mm and collar ring  $\varnothing$  25 mm or with cutter  $\varnothing$  16 mm and collar ring  $\varnothing$  27 mm.

Milling  
frame



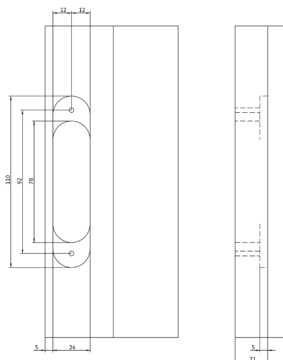
Milling  
door



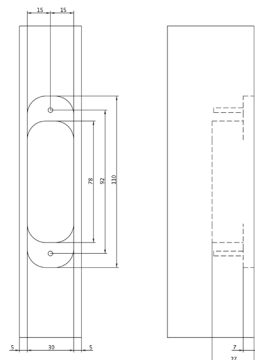
## AN 150 3D 28

Conduct routing with cutter  $\varnothing$  14 mm and collar ring  $\varnothing$  25 mm or with cutter  $\varnothing$  16 mm and collar ring  $\varnothing$  27 mm.

Milling  
frame



Milling  
door



## AN 150 3D 40

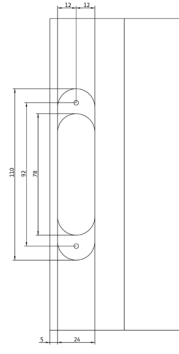
Conduct routing with cutter  $\varnothing$  14 mm and collar ring  $\varnothing$  25 mm or with cutter  $\varnothing$  16 mm and collar ring  $\varnothing$  27 mm.

# ROUTING DATA

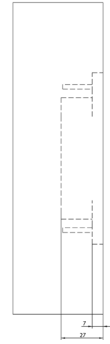
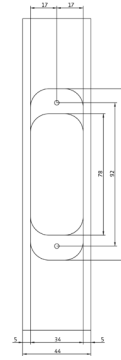
## AN 150 3D 44

Conduct routing with cutter  $\varnothing$  14 mm and collar ring  $\varnothing$  25 mm or with cutter  $\varnothing$  16 mm and collar ring  $\varnothing$  27 mm.

Milling frame



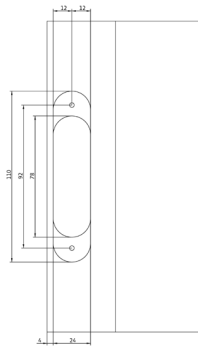
Milling door



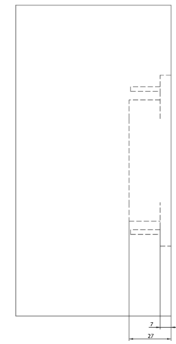
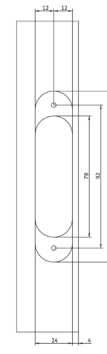
## AN 160 3D

Conduct routing with cutter  $\varnothing$  14 mm and collar ring  $\varnothing$  25 mm or with cutter  $\varnothing$  16 mm and collar ring  $\varnothing$  27 mm.

Milling frame



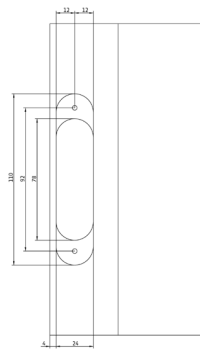
Milling door



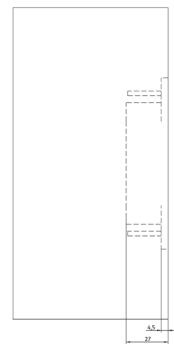
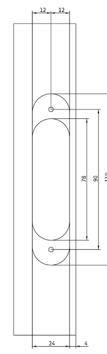
## AN 160 3D ALU

Conduct routing with cutter  $\varnothing$  14 mm and collar ring  $\varnothing$  25 mm or with cutter  $\varnothing$  16 mm and collar ring  $\varnothing$  27 mm.

Milling frame

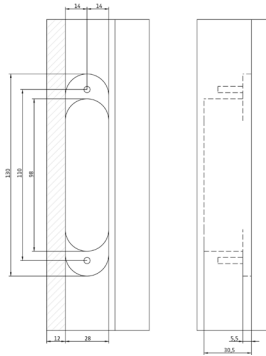


Milling door

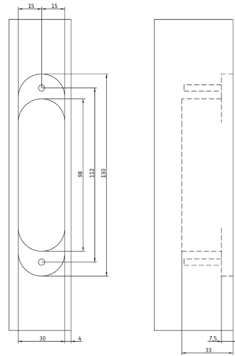


# ROUTING DATA

Milling  
frame



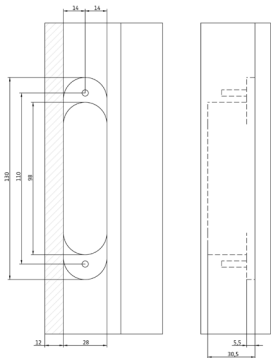
Milling  
door



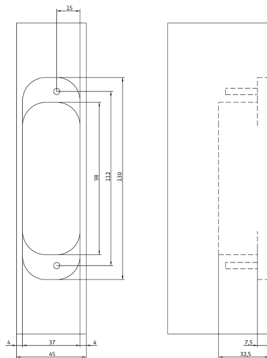
## AN 161 3D FVZ 12/38

Conduct routing with cutter  $\varnothing$  14 mm and collar ring  $\varnothing$  25 mm or with cutter  $\varnothing$  16 mm and collar ring  $\varnothing$  27 mm.

Milling  
frame



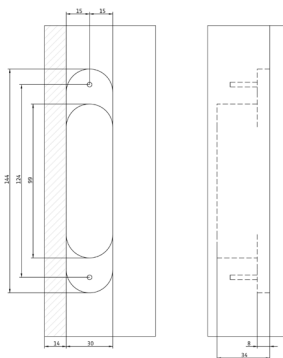
Milling  
door



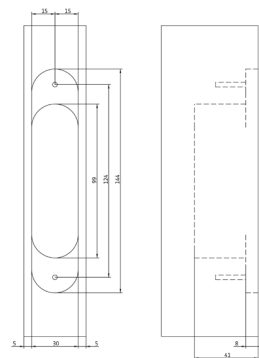
## AN 161 3D FVZ 12/45

Conduct routing with cutter  $\varnothing$  14 mm and collar ring  $\varnothing$  25 mm or with cutter  $\varnothing$  16 mm and collar ring  $\varnothing$  27 mm.

Milling  
frame



Milling  
door



## AN 161 3D FVZ 14/40

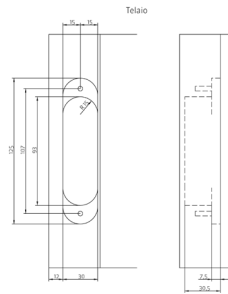
Conduct routing with cutter  $\varnothing$  14 mm and collar ring  $\varnothing$  25 mm or with cutter  $\varnothing$  16 mm and collar ring  $\varnothing$  27 mm.

# ROUTING DATA

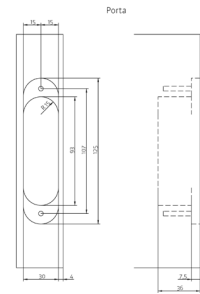
## AN 164 3D FVZ 12/38

Conduct routing with cutter  $\varnothing$  14 mm and collar ring  $\varnothing$  25 mm or with cutter  $\varnothing$  16 mm and collar ring  $\varnothing$  27 mm.

Milling  
frame



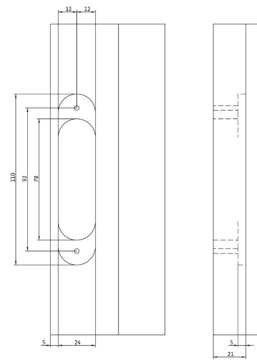
Milling  
door



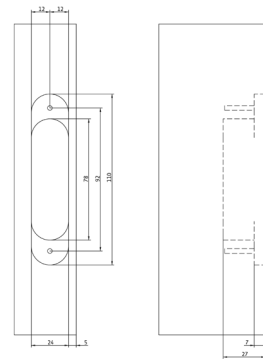
## AN 170 3D

Conduct routing with cutter  $\varnothing$  14 mm and collar ring  $\varnothing$  25 mm or with cutter  $\varnothing$  16 mm and collar ring  $\varnothing$  27 mm.

Milling  
frame



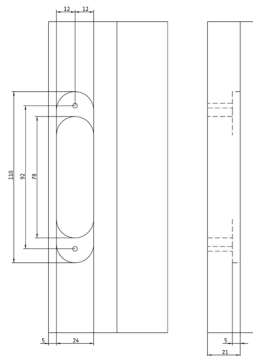
Milling  
door



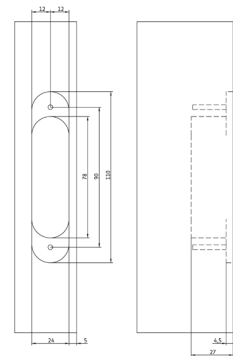
## AN 170 3D ALU

Conduct routing with cutter  $\varnothing$  14 mm and collar ring  $\varnothing$  25 mm or with cutter  $\varnothing$  16 mm and collar ring  $\varnothing$  27 mm.

Milling  
frame

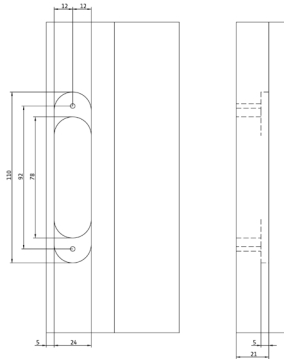


Milling  
door



# ROUTING DATA

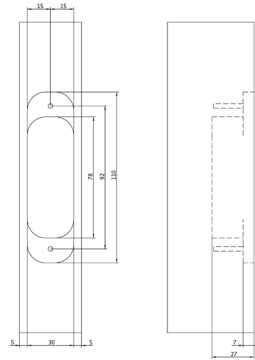
Milling  
frame



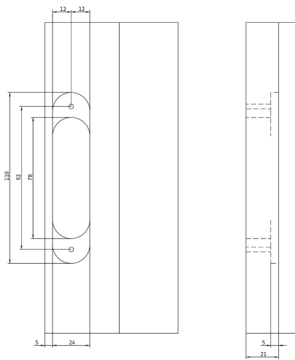
Milling  
door

## AN 170 3D 40

Conduct routing with cutter  $\varnothing$  14 mm and collar ring  $\varnothing$  25 mm or with cutter  $\varnothing$  16 mm and collar ring  $\varnothing$  27 mm.



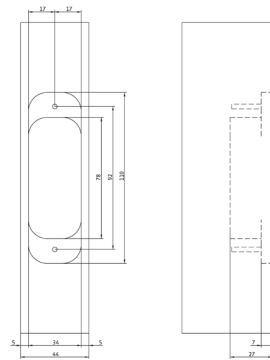
Milling  
frame



Milling  
door

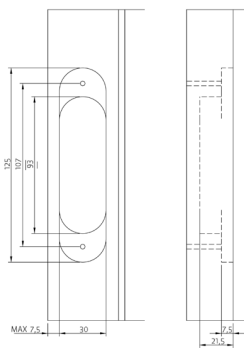
## AN 170 3D 44

Conduct routing with cutter  $\varnothing$  14 mm and collar ring  $\varnothing$  25 mm or with cutter  $\varnothing$  16 mm and collar ring  $\varnothing$  27 mm.

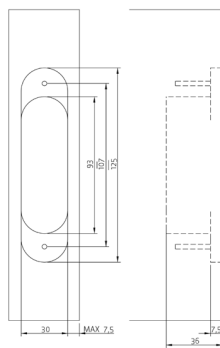


Milling  
frame

Stipite  
Frame



Porta  
Door



Milling  
door

## AN 172 3D

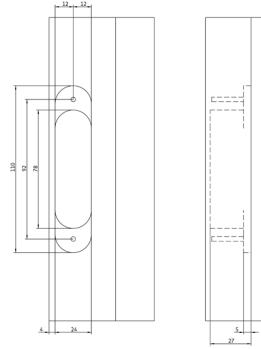
Conduct routing with cutter  $\varnothing$  14 mm and collar ring  $\varnothing$  25 mm or with cutter  $\varnothing$  16 mm and collar ring  $\varnothing$  27 mm.

# ROUTING DATA

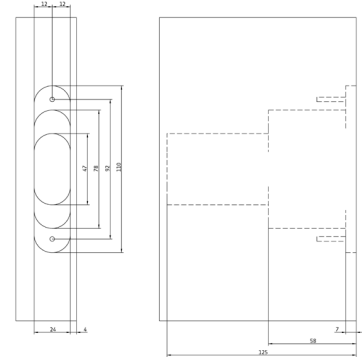
## AN 107 3D C40

Conduct routing with cutter  $\varnothing$  14 mm and collar ring  $\varnothing$ 25 mm or with cutter  $\varnothing$  16 mm and collar ring  $\varnothing$  27 mm.

Milling frame



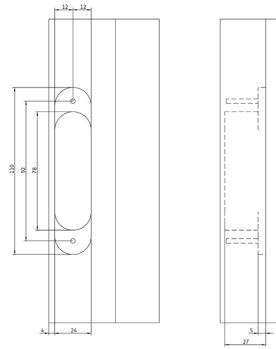
Milling door



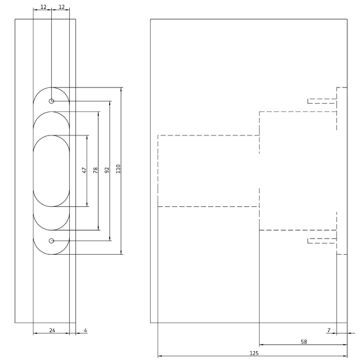
## AN 107 3D C60

Conduct routing with cutter  $\varnothing$  14 mm and collar ring  $\varnothing$ 25 mm or with cutter  $\varnothing$  16 mm and collar ring  $\varnothing$  27 mm.

Milling frame



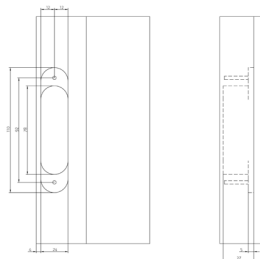
Milling door



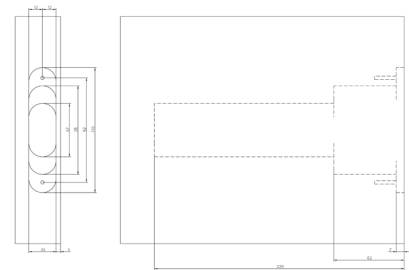
## AN 108 3D SC45

Conduct routing with cutter  $\varnothing$  14 mm and collar ring  $\varnothing$ 25 mm or with cutter  $\varnothing$  16 mm and collar ring  $\varnothing$  27 mm.

Milling frame

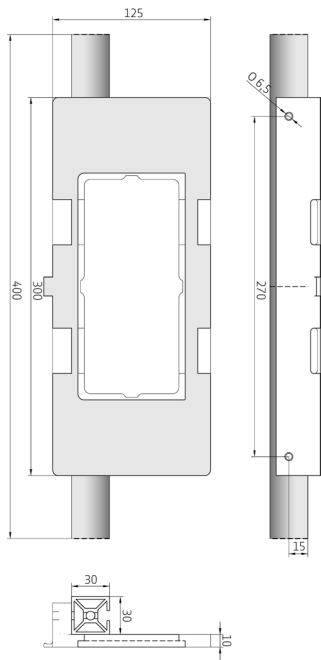


Milling door





# APPLICATION ACCESSORIES



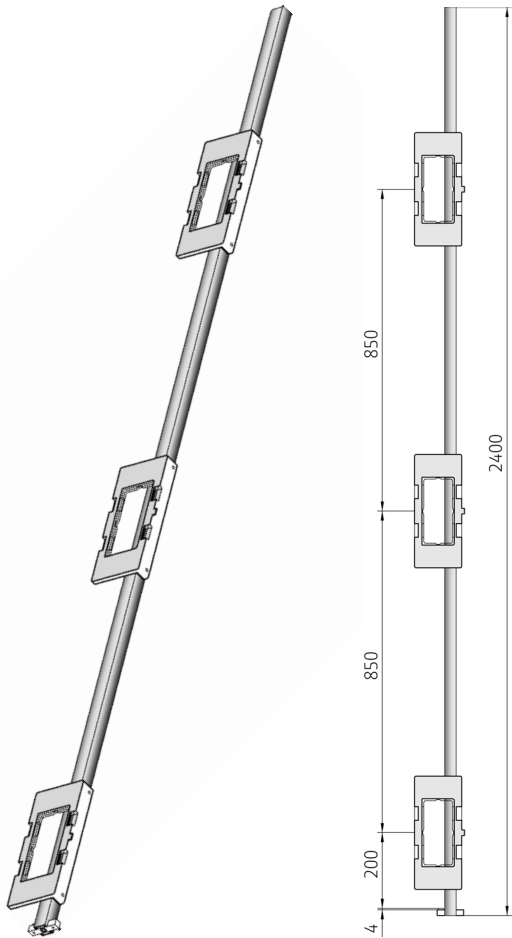
## Universal single milling frame

as well fitting installation aid for ANSELMI templates

### accessories

#### Note

Available with and without clamps. Templates need be ordered separately.



## Universal triple milling frame

as well fitting installation aid for ANSELMI templates

### accessories

#### Note

Available with and without clamps. Templates need be ordered separately.

## APPLICATION ACCESSORIES

### Template double

for precise routings in conjunction with ANSELMI jig technique

#### accessories

#### Technical details

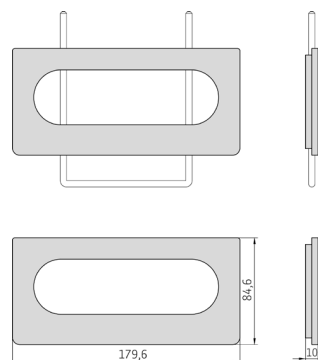
cutter diameter	14.0 or 16.0 mm
collar ring diameter	25.0 or 27.0 mm

#### Combination

hinge	AN 141 3D FVZ 14/44
-------	---------------------

#### Note

All indicated dimensions of angle and rail are just standards which may vary on the actual measurements depending on the construction. Where applicable, a trial routing is recommended.



### Template single

for precise routings in conjunction with ANSELMI jig technique

#### accessories

#### Technical details

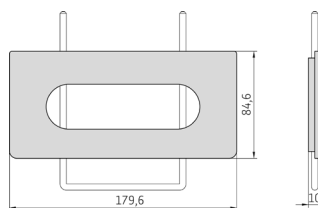
cutter diameter	14.0 or 16.0 mm
collar ring diameter	25.0 or 27.0 mm

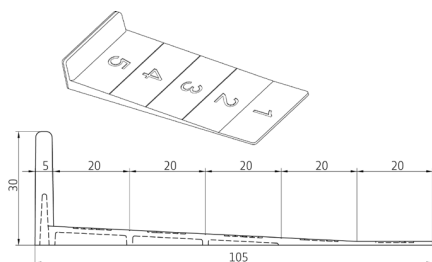
#### Combination

hinge	AN 140 3D
	AN 140 3D ALU
	AN 160 3D
	AN 160 3D ALU
	AN 180 3D
	AN 130 2D
	AN 150 3D
	AN 150 3D ALU

#### Note

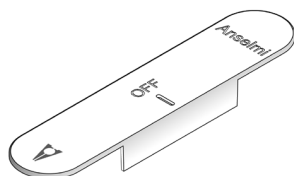
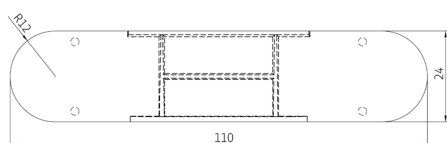
All indicated dimensions of angle and rail are just standards which may vary on the actual measurements depending on the construction. Where applicable, a trial routing is recommended.





## Door height adjustment wedge

as tool to ease the adjustment of the door height from 1 mm up to 5 mm



## Disposable/varnishable frame hole cover

to protect the hinge seat during the installation of the frame

### Note

The frame hole cover is especially indicated when the frames (usually aluminium frames) are installed on the building site several weeks or months before the doors are produced. The cover will protect the hinge seat from dust, cement, paint etc. and when the door will arrive on site the installation will result easier.

The use of this frame hole cover requires a special hinge packaging. Please contact us for further information.

# FINISHES



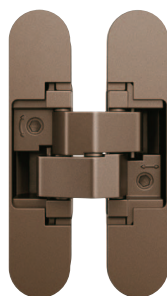
**Anthracite**  
(AN 050)



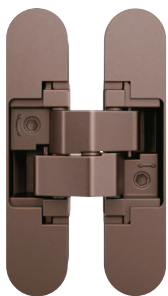
**Black**  
(AN 018)



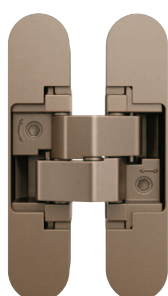
**Rustic Umber**  
(AN 012)



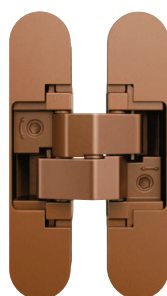
**Antique Bronze**  
(AN 035)



**Medium Bronze**  
(AN 051)



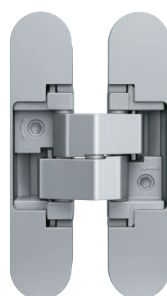
**Light Bronze**  
(AN 016)



**Copper**  
(AN 052)



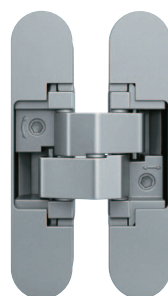
**Polished Brass**  
(AN 037)



**Aluminium Chrome**  
(AN 036)



**Polished Chrome**  
(AN 039)



**Satin Chrome**  
(AN 014)



**Satin Nickel**  
(AN 044)



**RAL 9016 Traffic White**  
(AN 049)

For more information please visit our PRODUCTSELECTOR at [www.anselmisrl.it](http://www.anselmisrl.it)







PLEASE VISIT OUR PRODUCTSELECTOR AT  
**[www.anselmisrl.it](http://www.anselmisrl.it)**

**Anselmi & C. S.r.l.**

Via Ca' Morelli, 19  
31056 Roncade (Treviso)  
Italy

Fon +39 (0)422/707426  
Fax +39 (0)422/840836

[info@anselmisrl.it](mailto:info@anselmisrl.it)  
[www.anselmisrl.it](http://www.anselmisrl.it)

**SIMONSWERK GmbH**

Bosfelder Weg 5  
33378 Rheda-Wiedenbrück  
Germany

Fon +49 (0)5242/413-0  
Fax +49 (0)5242/413-260

[sales@simonswerk.de](mailto:sales@simonswerk.de)  
[www.simonswerk.com](http://www.simonswerk.com)