

CATALOGUE 2019

CONCEALED HINGE
SYSTEMS FOR
RESIDENTIAL DOORS

INDEX

Model versions for unrebrated residential doors from 40 kg to 80 kg

12	AN 140 3D	up to 40 kg	
13	AN 140 3D ALU	up to 40 kg	aluminium framed doors
14	AN 142 3D	up to 40 kg	with central milling
15	AN 160 3D	up to 60 kg	
16	AN 160 3D ALU	up to 60 kg	aluminium framed doors
17	AN 180 3D	up to 80 kg	

Model versions for doors with recessed frame facings from 12-14 mm

20	AN 141 3D FVZ 12/38	up to 40 kg	with 12 mm recessed frame facings	38 mm door thickness
21	AN 141 3D FVZ 12/45	up to 40 kg	with 12 mm recessed frame facings	45 mm door thickness
22	AN 141 3D FVZ 14/40	up to 40 kg	with 14 mm recessed frame facings	40 mm door thickness
23	AN 141 3D FVZ 14/44	up to 40 kg	with 14 mm recessed frame facings	44 mm door thickness
24	AN 161 3D FVZ 12/38	up to 60 kg	with 12 mm recessed frame facings	38 mm door thickness
25	AN 161 3D FVZ 12/45	up to 60 kg	with 12 mm recessed frame facings	45 mm door thickness
26	AN 161 3D FVZ 14/40	up to 60 kg	with 14 mm recessed frame facings	40 mm door thickness

Model versions for doors with reduced hinge frame part

30	AN 130 2D	up to 20 kg	
31	AN 150 3D	up to 40 kg	
32	AN 150 3D ALU	up to 40 kg	aluminium framed doors
33	AN 150 3D 28	up to 40 kg	28 mm door thickness
34	AN 150 3D 40	up to 40 kg	40 mm door thickness
35	AN 150 3D 44	up to 40 kg	44 mm door thickness
36	AN 170 3D	up to 60 kg	
37	AN 170 3D ALU	up to 60 kg	aluminium framed doors
38	AN 170 3D 40	up to 60 kg	40 mm door thickness
39	AN 170 3D 44	up to 60 kg	44 mm door thickness

Model versions with integrated closing function

42	AN 107 3D C40	closing power 20-40 kg	
43	AN 107 3D C60	closing power 40-60 kg	
44	AN 108 3D SC45	closing power 45 kg	integrated damping function

46 Routing data

55 Application accessories

57 Accessories

58 Finishes



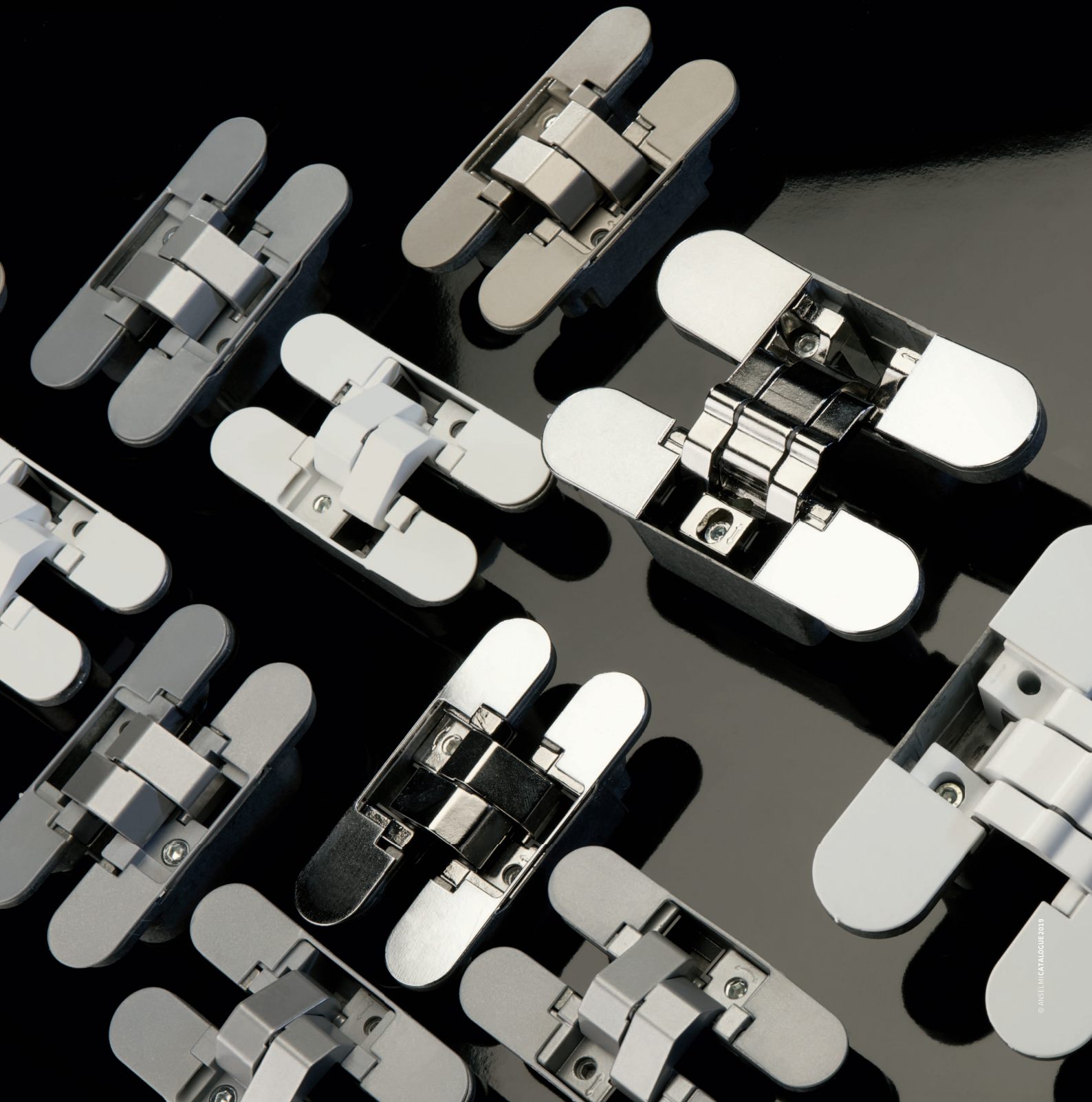
CONCEALED HINGE SYSTEMS FOR RESIDENTIAL DOORS

The extensive range of hinges produced by Anselmi offers high quality products for light interior doors. These concealed hinge systems are suitable mostly for interior residential doors as well as for internal doors up to 80 kg and are available in several model versions.

Doors with recessed frame facings are particularly requested by the modern architecture which looks for minimalism in interior rooms. Thanks to the FVZ models of Anselmi the door frame can disappear behind a drywall or a woodwork leaving just the essence of the door visible to the eyes. Anselmi has also developed a completely concealed self closing hinge system offering both functionality and elegance to the door.

For those manufacturers searching for production economies of scale and easy installation of their products on-site, over the years Anselmi developed several interesting hinge solutions. Model versions with reduced hinge frame part allow the installation of frame architrave without any additional operation on-site, while the central milling on the door panel offers a complete reversibility of the door, that can be used indistinctly for left and right as well as for inward and outward opening. Furthermore, the extensive programme allows to switch between the different hinge models, increasing the load capacity whilst keeping the same milling geometry.

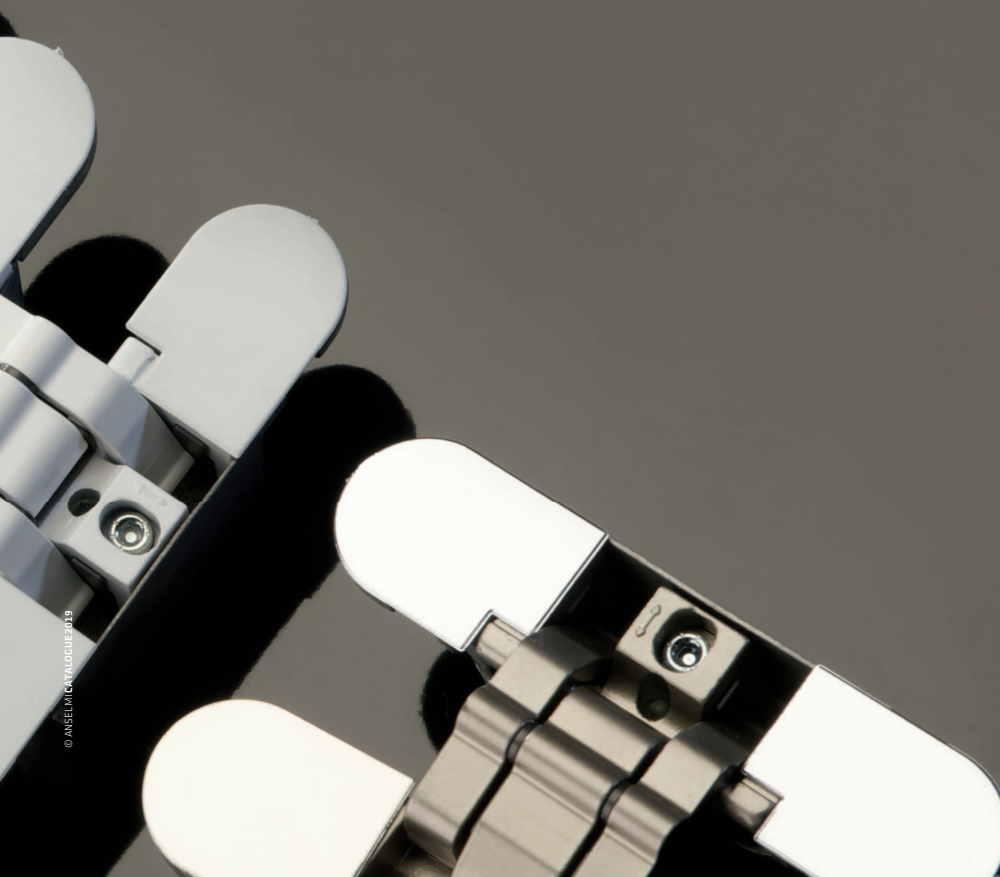
Hinge systems from Anselmi are three-dimensionally adjustable and guarantee a long lasting, maintenance-free operation of the door and are available in 9 aesthetical finishes.



QUALITY MADE IN ITALY SINCE 1973

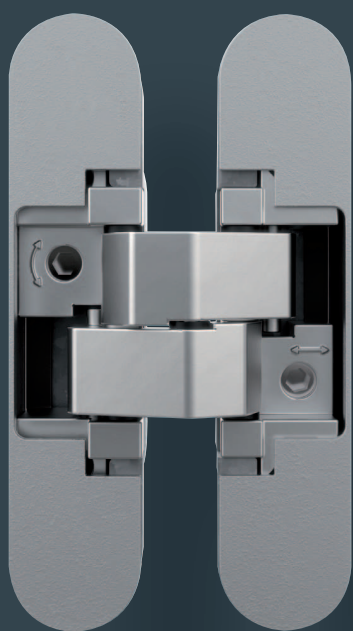
Anselmi & C. srl is an Italian manufacturer of concealed hinge systems and hardware and since 2017 member of the SIMONSWERK group. The traditional family business is located in the Italian town of Roncade, near Venice. The company was founded in 1973 by Bepi Anselmi – initially with a focus on hinges for high-quality furniture – for several years with a focus on concealed hinge systems for residential interior doors. With the quality-orientated view the Anselmi concealed hinge programme matches perfectly to the product range and the philosophy of SIMONSWERK.

From the first idea to the prototyping, from the creation of the moulds to the assembly of the hinges, all aspects related to the production of the hinges take place within the facilities of Anselmi. Sustainable and environmental friendly processes are part of the company philosophy and are achieved through an efficient production that puts at first place recycling of resources and energy saving. Before releasing the product for sales, hinges are tested according to the latest norms inside the dedicated test area where load capacity tests and cycle tests are performed.



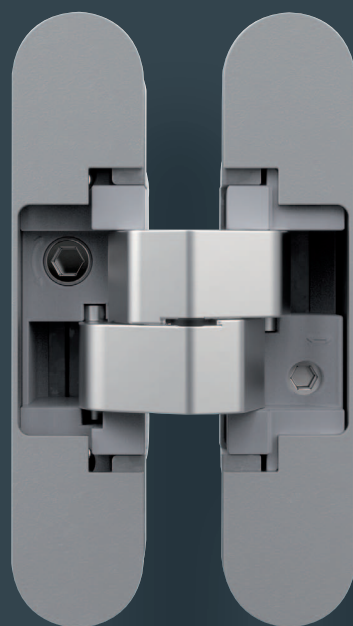
PRODUCT OVERVIEW

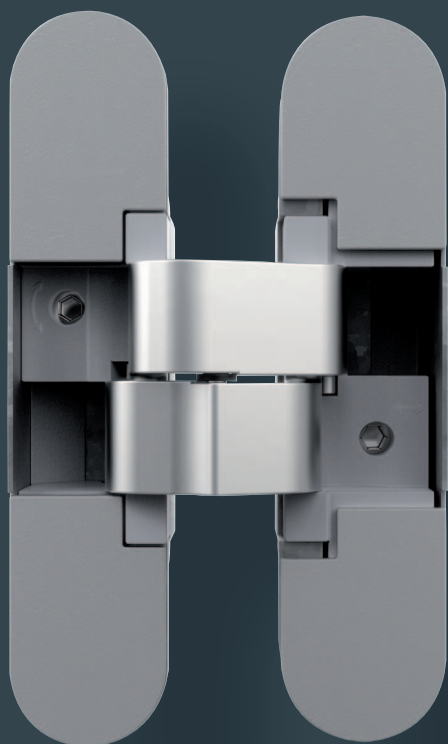
Anselmi offers concealed hinge systems for interior residential doors up to 80 kg. Here is an overview of the model versions.



Model versions for unrebated residential doors from 40 kg to 80 kg

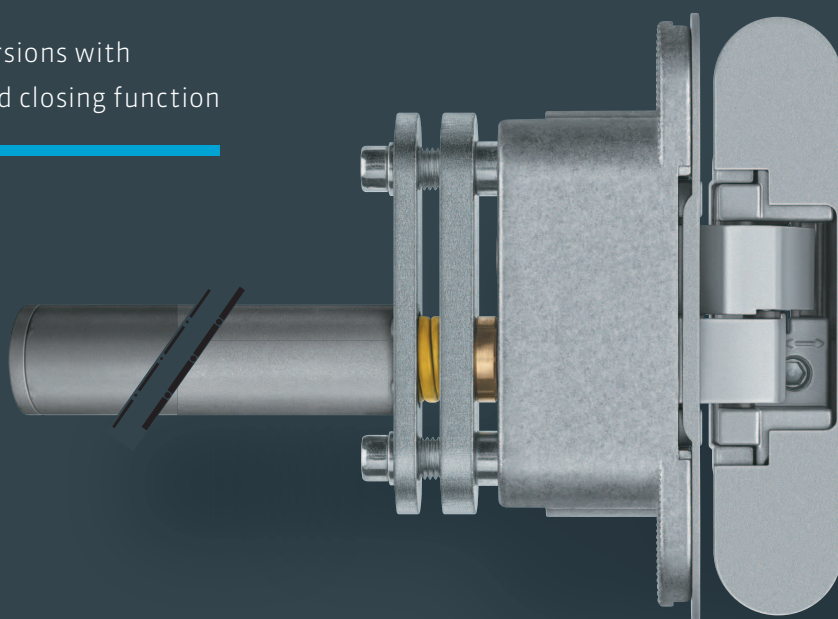
Model versions for doors with reduced hinge frame part

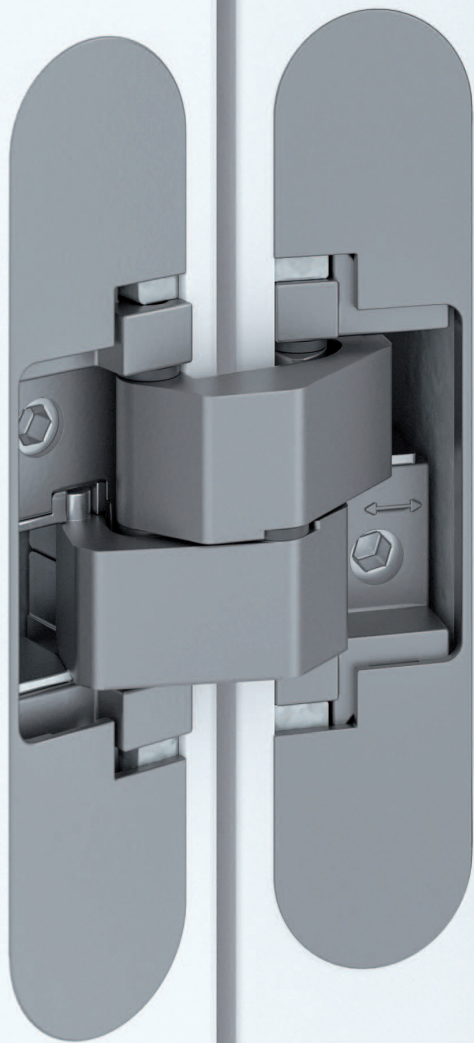




Model versions for doors with recessed
frame facings from 12-14 mm

Model versions with
integrated closing function





Hinge system AN 160 3D

MODEL VERSIONS FOR UNREBATED RESIDENTIAL DOORS

- › completely concealed
- › for unrebated residential doors
- › versions for aluminium framed doors
- › load capacities up to 80 kg
- › opening angle 180°

AN 140 3D

for unrebated residential doors up to 40 kg

hinge		up to 40 kg
-------	--	-------------

Product features

- completely concealed hinge system
- for timber frames
- for unrebated residential doors
- 3D adjustable (side +/- 1.5 mm, height +/- 2.5 mm, compression +/- 1.0 mm)
- material zamak/acetal

Technical details

load capacity	i 2 hinges per door leaf (900x2100 mm)	40.0 kg
overall length		110.0 mm
width (frame)		24.0 mm
width (door)		24.0 mm
cutter diameter		14.0 or 16.0 mm
collar ring diameter		25.0 or 27.0 mm
opening angle		180°

Finish

Satin Chrome (AN 014), Coated Bronze (AN 017), Black (AN 018), Antique Bronze (AN 035), Aluminium Chrome (AN 036), Polished Brass (AN 037), Polished Chrome (AN 039), Satin Nickel (AN 044), RAL 9016 Traffic White (AN 049)

Combination

receiver	casing frame	AN 140 3D FZ
----------	--------------	--------------

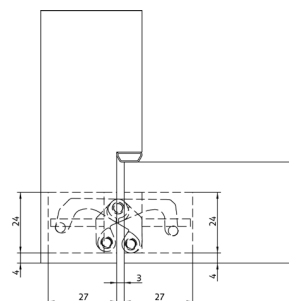
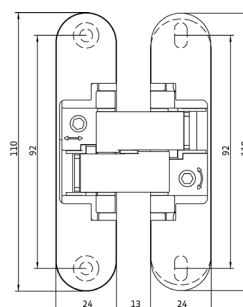
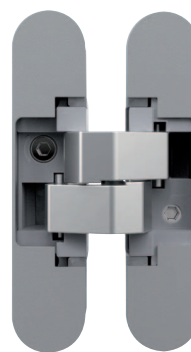
Note

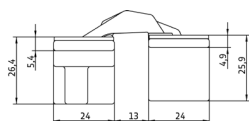
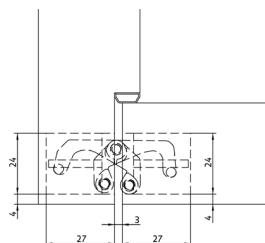
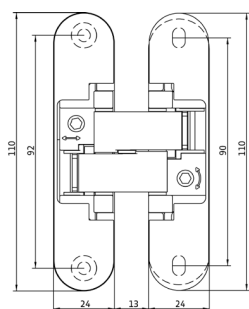
i The load capacity mentioned above refers to the use of 2 hinges per door leaf (900 x 2100 mm).

Suggested screws:

Frame side: Countersunk head screws DIN 7505 A, Diameter 4.5 mm

Door side: Pan head screws DIN 7505 B, Diameter 4.5 mm





AN 140 3D ALU

for unrebated residential doors with aluminium frames up to 40 kg

hinge	aluminium framed doors	up to 40 kg
-------	------------------------	-------------

Product features

- completely concealed hinge system
- for timber frames
- for unrebated residential doors with aluminium frames
- 3D adjustable (side +/- 1.5 mm, height +/- 1.5 mm, compression +/- 1.0 mm)
- material zamak/acetal

Technical details

load capacity	i 2 hinges per door leaf (900x2100 mm)	40.0 kg
overall length		110.0 mm
width (frame)		24.0 mm
width (door)		24.0 mm
cutter diameter		14.0 or 16.0 mm
collar ring diameter		25.0 or 27.0 mm
opening angle		180°

Finish

Satin Chrome (AN 014), Coated Bronze (AN 017), Black (AN 018), Antique Bronze (AN 035), Aluminium Chrome (AN 036), Polished Brass (AN 037), Polished Chrome (AN 039), Satin Nickel (AN 044), RAL 9016 Traffic White (AN 049)

Combination

receiver	casing frame	AN 140 3D FZ
----------	--------------	--------------

Note

i The load capacity mentioned above refers to the use of 2 hinges per door leaf (900 x 2100 mm).

Suggested screws:

Frame side: Countersunk head screws DIN 7505 A, Diameter 4.5 mm

Door side: Countersunk head screws DIN 7505 A, Diameter 4.5 mm

AN 142 3D

for unrebated residential doors with central installation up to 40 kg

hinge up to 40 kg

Product features

- completely concealed hinge system
- for timber frames
- for unrebated residential doors
- 3D adjustable (side +/- 1.5 mm, height +/- 2.5 mm, compression +/- 1.0 mm)
- central installation
- door thicknesses 35-45 mm
- material zamak/acetal

Technical details

load capacity	i 2 hinges per door leaf (900x2100 mm)	40.0 kg
overall length		144.0 mm
width (frame)		27.0 mm
width (door)		27.0 mm
cutter diameter		14.0 or 16.0 mm
collar ring diameter		25.0 or 27.0 mm
opening angle		180°

Finish

Satin Chrome (AN 014), Coated Bronze (AN 017), Black (AN 018), Antique Bronze (AN 035), Aluminium Chrome (AN 036), Polished Brass (AN 037), Polished Chrome (AN 039), Satin Nickel (AN 044), RAL 9016 Traffic White (AN 049)

Note

i The load capacity mentioned above refers to the use of 2 hinges per door leaf (900 x 2100 mm).

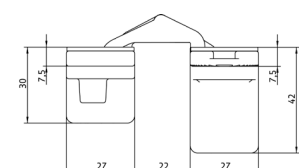
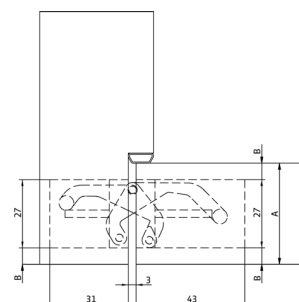
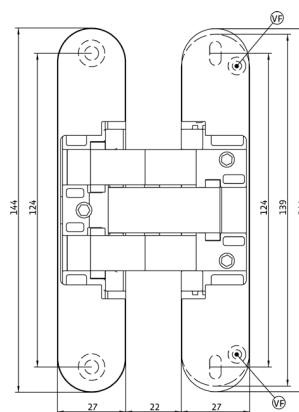
Suggested screws:

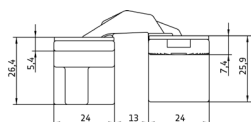
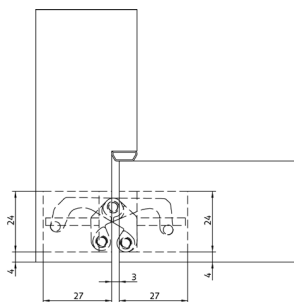
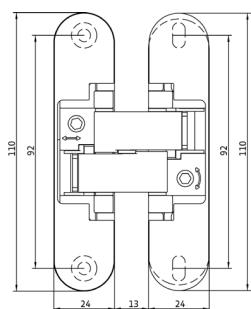
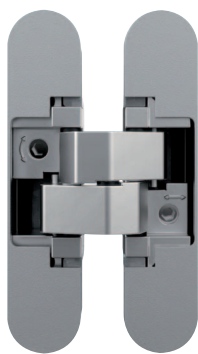
Frame side: Countersunk head screws DIN 7505 A, Diameter 4.5 mm

Door side: Pan head screws DIN 7505 B, Diameter 4.5 mm

If necessary, it is possible to lock the vertical adjustment of the hinge by means of a vertical adjustment screw (VF).

The central installation applies for door thicknesses between 35 mm and 45 mm. The routing position (B) is always the difference between the door thickness (A) and the hinge width of 27 mm divided by two.





AN 160 3D

for unrebated residential doors up to 60 kg

hinge		up to 60 kg
-------	--	-------------

Product features

- completely concealed hinge system
- for timber frames
- for unrebated residential doors
- 3D adjustable (side +/- 1.5 mm, height +/- 2.5 mm, compression +/- 1.0 mm)
- material zamak

Technical details

load capacity	i 2 hinges per door leaf (900x2100 mm)	60.0 kg
overall length		110.0 mm
width (frame)		24.0 mm
width (door)		24.0 mm
cutter diameter		14.0 or 16.0 mm
collar ring diameter		25.0 or 27.0 mm
opening angle		180°

Finish

Satin Chrome (AN 014), Coated Bronze (AN 017), Black (AN 018), Antique Bronze (AN 035), Aluminium Chrome (AN 036), Polished Brass (AN 037), Polished Chrome (AN 039), Satin Nickel (AN 044), RAL 9016 Traffic White (AN 049)

Combination

receiver	casing frame	AN 140 3D FZ
----------	--------------	--------------

Note

i The load capacity mentioned above refers to the use of 2 hinges per door leaf (900 x 2100 mm).

Suggested screws:

Frame side: Countersunk head screws DIN 7505 A, Diameter 4.5 mm

Door side: Pan head screws DIN 7505 B, Diameter 4.5 mm

AN 160 3D ALU

for unrebated residential doors with aluminium frames up to 60 kg

hinge	aluminium framed doors	up to 60 kg
-------	------------------------	-------------

Product features

- completely concealed hinge system
- for timber frames
- for unrebated residential doors with aluminium frames
- 3D adjustable (side +/- 1.5 mm, height +/- 1.5 mm, compression +/- 1.0 mm)
- material zamak

Technical details

load capacity	i 2 hinges per door leaf (900x2100 mm)	60.0 kg
overall length		110.0 mm
width (frame)		24.0 mm
width (door)		24.0 mm
cutter diameter		14.0 or 16.0 mm
collar ring diameter		25.0 or 27.0 mm
opening angle		180°

Finish

Satin Chrome (AN 014), Coated Bronze (AN 017), Black (AN 018), Antique Bronze (AN 035), Aluminium Chrome (AN 036), Polished Brass (AN 037), Polished Chrome (AN 039), Satin Nickel (AN 044), RAL 9016 Traffic White (AN 049)

Combination

receiver	casing frame	AN 140 3D FZ
----------	--------------	--------------

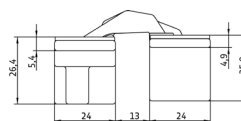
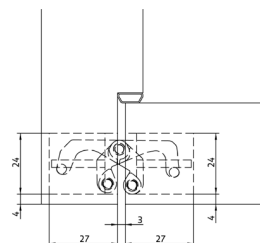
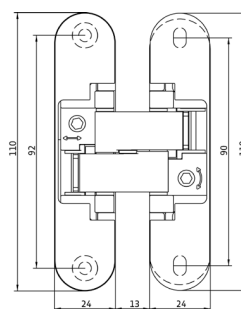
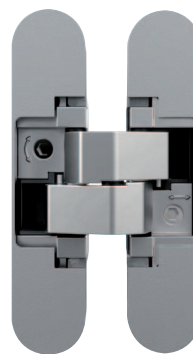
Note

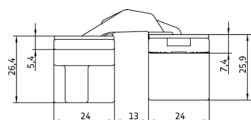
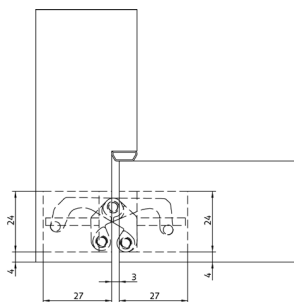
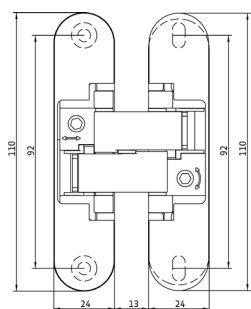
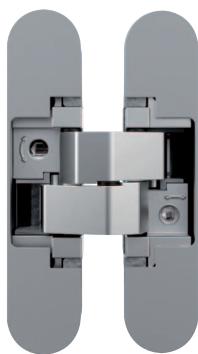
i The load capacity mentioned above refers to the use of 2 hinges per door leaf (900 x 2100 mm).

Suggested screws:

Frame side: Countersunk head screws DIN 7505 A, Diameter 4.5 mm

Door side: Countersunk head screws DIN 7505 A, Diameter 4.5 mm





AN 180 3D

for unrebated residential doors up to 80 kg

hinge		up to 80 kg
-------	--	-------------

Product features

- completely concealed hinge system
- for timber frames
- for unrebated residential doors
- 3D adjustable (side +/- 1.5 mm, height +/- 2.5 mm, compression +/- 1.0 mm)
- material zamak/steel

Technical details

load capacity	i 2 hinges per door leaf (900x2100 mm)	80.0 kg
overall length		110.0 mm
width (frame)		24.0 mm
width (door)		24.0 mm
cutter diameter		14.0 or 16.0 mm
collar ring diameter		25.0 or 27.0 mm
opening angle		180°

Finish

Satin Chrome (AN 014), Coated Bronze (AN 017), Black (AN 018), Antique Bronze (AN 035), Aluminium Chrome (AN 036), Polished Brass (AN 037), Polished Chrome (AN 039), Satin Nickel (AN 044), RAL 9016 Traffic White (AN 049)

Combination

receiver	casing frame	AN 140 3D FZ
----------	--------------	--------------

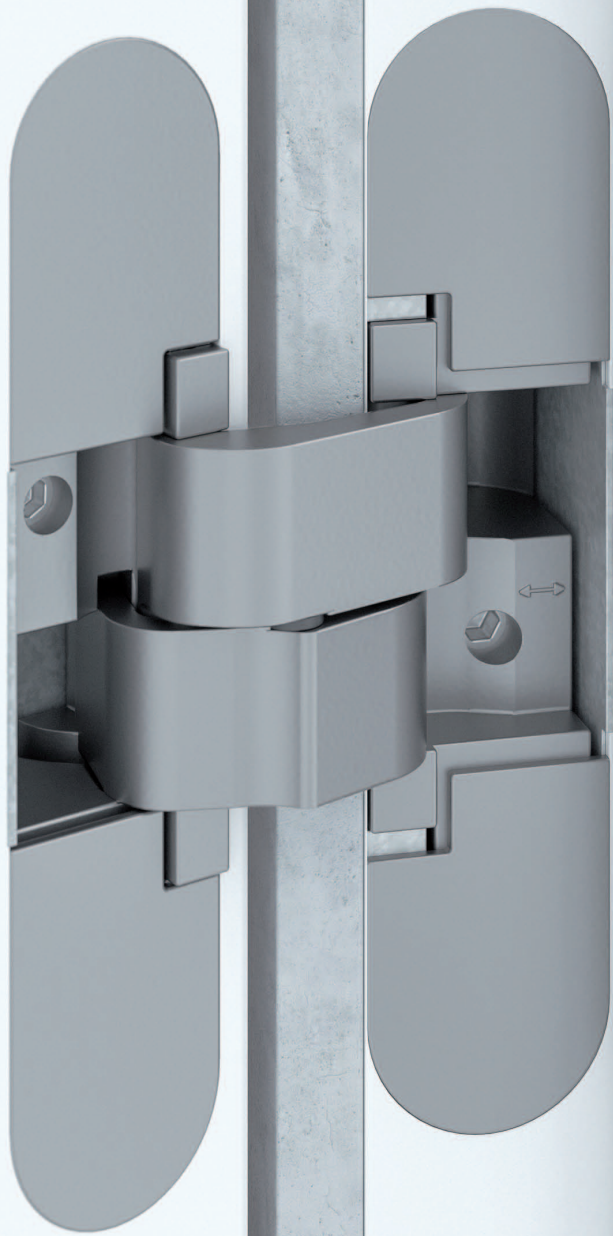
Note

i The load capacity mentioned above refers to the use of 2 hinges per door leaf (900 x 2100 mm).

Suggested screws:

Frame side: Countersunk head screws DIN 7505 A, Diameter 4.5 mm

Door side: Pan head screws DIN 7505 B, Diameter 4.5 mm



Hinge system AN 141 3D FVZ 12/38

MODEL VERSIONS FOR DOORS WITH RECESSED FRAME FACINGS

- › 12 mm and 14 mm recessed frame facings
- › 38 - 45 mm door thicknesses
- › central milling
- › load capacities up to 60 kg
- › opening angle 180°

AN 141 3D FVZ 12/38

for unrebeated 38 mm thick residential doors with 12 mm recessed frame facings up to 40 kg

hinge	recessed frame facings	up to 40 kg
-------	------------------------	-------------

Product features

- FVZ = recessed frame facings
- recessed frame facings up to 12.0 mm
- door thickness 38 mm
- completely concealed hinge system
- for timber frames
- for unrebeated residential doors
- 3D adjustable (side +/- 1.5 mm, height +/- 2.5 mm, compression +/- 1.0 mm)
- central installation
- material zamak/acetal

Technical details

load capacity	i 2 hinges per door leaf (900x2100 mm)	40.0 kg
overall length		130.0 mm
width (frame)		28.0 mm
width (door)		30.0 mm
cutter diameter		14.0 or 16.0 mm
collar ring diameter		25.0 or 27.0 mm
opening angle		180°

Finish

Satin Chrome (AN 014), Coated Bronze (AN 017), Black (AN 018), Antique Bronze (AN 035), Aluminium Chrome (AN 036), Polished Brass (AN 037), Polished Chrome (AN 039), Satin Nickel (AN 044), RAL 9016 Traffic White (AN 049)

Note

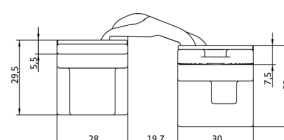
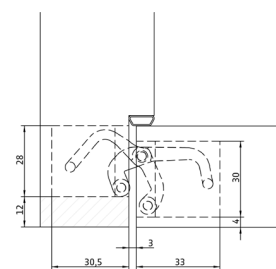
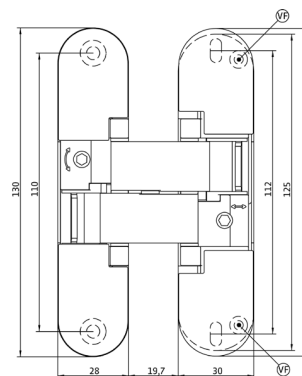
i The load capacity mentioned above refers to the use of 2 hinges per door leaf (900 x 2100 mm).

Suggested screws:

Frame side: Countersunk head screws DIN 7505 A, Diameter 5 mm

Door side: Pan head screws DIN 7505 B, Diameter 4 mm

If necessary, it is possible to lock the vertical adjustment of the hinge by means of a vertical adjustment screw (VF).





AN 141 3D FVZ 12/45

for unrebated 45 mm thick residential doors with 12 mm recessed frame facings up to 40 kg

hinge	recessed frame facings	up to 40 kg
-------	------------------------	-------------

Product features

- FVZ = recessed frame facings
- recessed frame facings up to 12.0 mm
- door thickness 45 mm
- completely concealed hinge system
- for timber frames
- for unrebated residential doors
- 3D adjustable (side +/- 1.5 mm, height +/- 2.5 mm, compression +/- 1.0 mm)
- central installation
- material zamak/acetel

Technical details

load capacity	i 2 hinges per door leaf (900x2100 mm)	40.0 kg
overall length		130.0 mm
width (frame)		28.0 mm
width (door)		37.0 mm
cutter diameter		14.0 or 16.0 mm
collar ring diameter		25.0 or 27.0 mm
opening angle		180°

Finish

Satin Chrome (AN 014), Coated Bronze (AN 017), Black (AN 018), Antique Bronze (AN 035), Aluminium Chrome (AN 036), Polished Brass (AN 037), Polished Chrome (AN 039), Satin Nickel (AN 044), RAL 9016 Traffic White (AN 049)

Note

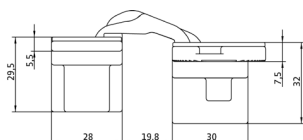
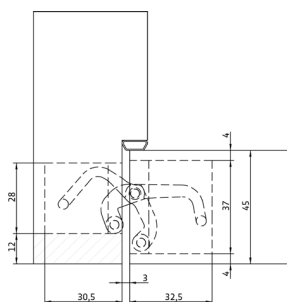
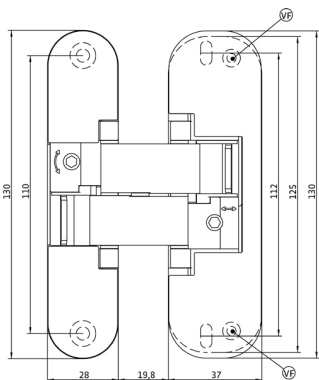
i The load capacity mentioned above refers to the use of 2 hinges per door leaf (900 x 2100 mm).

Suggested screws:

Frame side: Countersunk head screws DIN 7505 A, Diameter 5 mm

Door side: Pan head screws DIN 7505 B, Diameter 4 mm

If necessary, it is possible to lock the vertical adjustment of the hinge by means of a vertical adjustment screw (VF).



AN 141 3D FVZ 14/40

for unrebeated 40 mm thick residential doors with 14 mm recessed frame facings up to 40 kg

hinge	recessed frame facings	up to 40 kg
-------	------------------------	-------------

Product features

- FVZ = recessed frame facings
- recessed frame facings up to 14.0 mm
- door thickness 40 mm
- completely concealed hinge system
- for timber frames
- for unrebeated residential doors
- 3D adjustable (side +/- 1.5 mm, height +/- 2.5 mm, compression +/- 1.0 mm)
- central installation
- material zamak/acetal

Technical details

load capacity	i 2 hinges per door leaf (900x2100 mm)	40.0 kg
overall length		144.0 mm
width (frame)		30.0 mm
width (door)		30.0 mm
cutter diameter		14.0 or 16.0 mm
collar ring diameter		25.0 or 27.0 mm
opening angle		180°

Finish

Satin Chrome (AN 014), Coated Bronze (AN 017), Black (AN 018), Antique Bronze (AN 035), Aluminium Chrome (AN 036), Polished Brass (AN 037), Polished Chrome (AN 039), Satin Nickel (AN 044), RAL 9016 Traffic White (AN 049)

Note

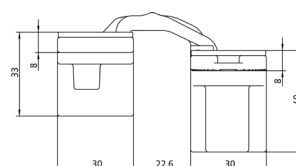
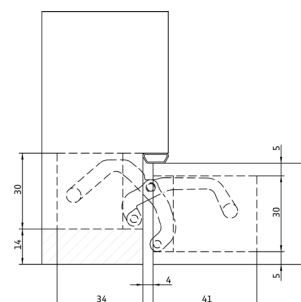
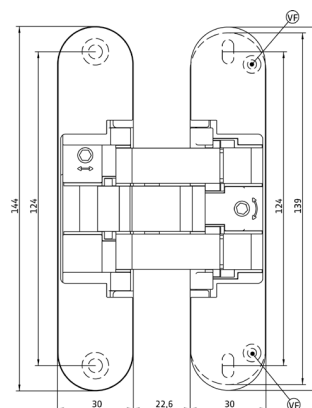
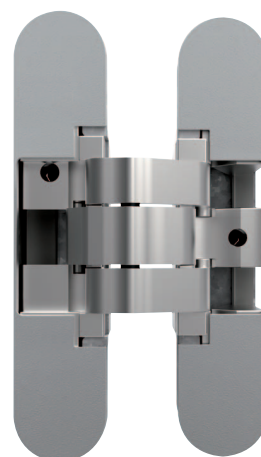
i The load capacity mentioned above refers to the use of 2 hinges per door leaf (900 x 2100 cm).

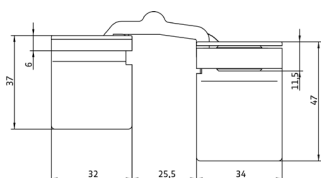
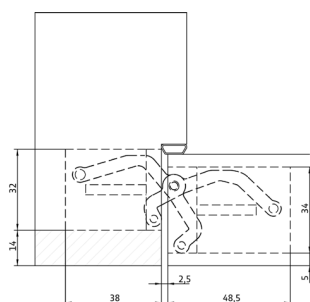
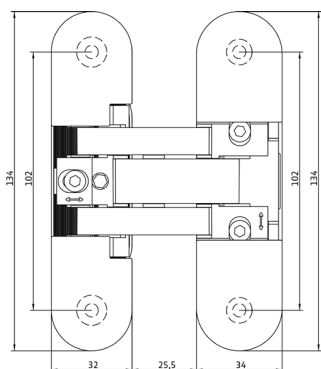
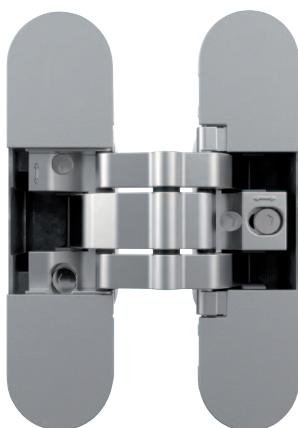
Suggested screws:

Frame side: Countersunk head screws DIN 7505 A, Diameter 5 mm

Door side: Pan head screws DIN 7505 B, Diameter 4 mm

If necessary, it is possible to lock the vertical adjustmen of the hinge by means of a vertical adjustment screw (VF).





AN 141 3D FVZ 14/44

for unrebbated 44 mm thick residential doors with 14 mm recessed frame facings up to 40 kg

hinge	recessed frame facings	up to 40 kg
-------	------------------------	-------------

Product features

- FVZ = recessed frame facings
- with recessed frame facings up to 14.0 mm
- door thickness 44 mm
- completely concealed hinge system
- for timber frames
- for unrebbated residential doors
- 3D adjustable (side +/- 1.0 mm, height +/- 1.5 mm, compression +/- 1.0 mm)
- central installation
- material zamak

Technical details

load capacity	i 2 hinges per door leaf (900x2100 mm)	40.0 kg
overall length		134.0 mm
width (frame)		32.0 mm
width (door)		34.0 mm
cutter diameter		14.0 or 16.0 mm
collar ring diameter		25.0 or 27.0 mm
opening angle		180°

Finish

Satin Chrome (AN 014), Coated Bronze (AN 017), Black (AN 018), Polished Brass (AN 037), Polished Chrome (AN 039), Satin Nickel (AN 044), RAL 9016 Traffic White (AN 049)

Note

i The load capacity mentioned above refers to the use of 2 hinges per door leaf (900 x 2100 mm).

Suggested screws:

Frame side: Countersunk head screws DIN 7505 A, Diameter 5 mm

Door side: Countersunk head screws DIN 7505 A, Diameter 5 mm

AN 161 3D FVZ 12/38

for unrebeated 38 mm thick residential doors with 12 mm recessed frame facings up to 60 kg

hinge	recessed frame facings	up to 60 kg
-------	------------------------	-------------

Product features

- FVZ = recessed frame facings
- recessed frame facings up to 12.0 mm
- door thickness 38 mm
- completely concealed hinge system
- for timber frames
- for unrebeated residential doors
- 3D adjustable (side +/- 1.5 mm, height +/- 2.5 mm, compression +/- 1.0 mm)
- central installation
- material zamak

Technical details

load capacity	i 2 hinges per door leaf (900x2100 mm)	60.0 kg
overall length		130.0 mm
width (frame)		28.0 mm
width (door)		30.0 mm
cutter diameter		14.0 or 16.0 mm
collar ring diameter		25.0 or 27.0 mm
opening angle		180°

Finish

Satin Chrome (AN 014), Coated Bronze (AN 017), Black (AN 018), Antique Bronze (AN 035), Aluminium Chrome (AN 036), Polished Brass (AN 037), Polished Chrome (AN 039), Satin Nickel (AN 044), RAL 9016 Traffic White (AN 049)

Note

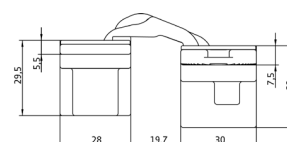
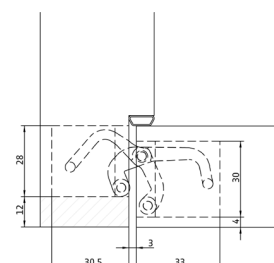
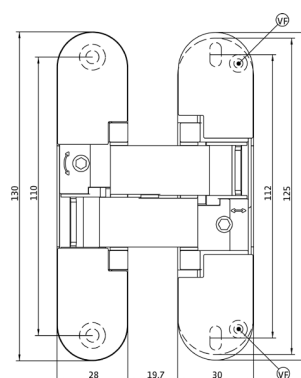
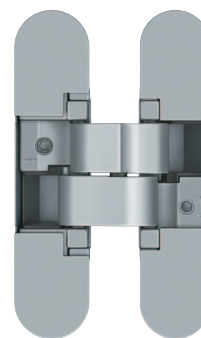
i The load capacity mentioned above refers to the use of 2 hinges per door leaf (900 x 2100 mm).

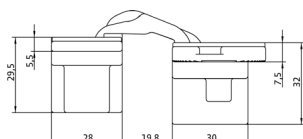
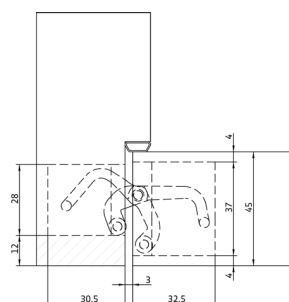
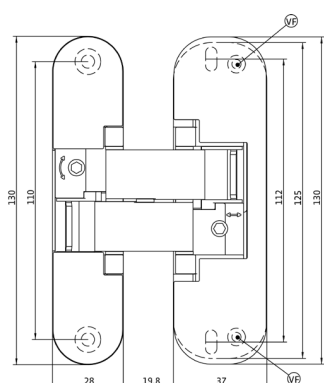
Suggested screws:

Frame side: Countersunk head screws DIN 7505 A, Diameter 5 mm

Door side: Pan head screws DIN 7505 B, Diameter 4 mm

If necessary, it is possible to lock the vertical adjustment of the hinge by means of a vertical adjustment screw (VF).





AN 161 3D FVZ 12/45

for unrebated 45 mm thick residential doors with 12 mm recessed frame facings up to 60 kg

hinge	recessed frame facings	up to 60 kg
-------	------------------------	-------------

Product features

- FVZ = recessed frame facings
- recessed frame facings up to 12.0 mm
- door thickness 45 mm
- completely concealed hinge system
- for timber frames
- for unrebated residential doors
- 3D adjustable (side +/- 1.5 mm, height +/- 2.5 mm, compression +/- 1.0 mm)
- central installation
- material zamak

Technical details

load capacity	i 2 hinges per door leaf (900x2100 mm)	60.0 kg
overall length		130.0 mm
width (frame)		28.0 mm
width (door)		37.0 mm
cutter diameter		14.0 or 16.0 mm
collar ring diameter		25.0 or 27.0 mm
opening angle		180°

Finish

Satin Chrome (AN 014), Coated Bronze (AN 017), Black (AN 018), Antique Bronze (AN 035), Aluminium Chrome (AN 036), Polished Brass (AN 037), Polished Chrome (AN 039), Satin Nickel (AN 044), RAL 9016 Traffic White (AN 049)

Note

i The load capacity mentioned above refers to the use of 2 hinges per door leaf (900 x 2100 mm).

Suggested screws:

Frame side: Countersunk head screws DIN 7505 A, Diameter 5 mm

Door side: Pan head screws DIN 7505 B, Diameter 4 mm

If necessary, it is possible to lock the vertical adjustment of the hinge by means of a vertical adjustment screw (VF).

AN 161 3D FVZ 14/40

for unrebbated 40 mm thick residential doors with 14 mm recessed frame facings up to 60 kg

hinge	recessed frame facings	up to 60 kg
-------	------------------------	-------------

Product features

- FVZ = recessed frame facings
- recessed frame facings up to 14.0 mm
- door thickness 40 mm
- completely concealed hinge system
- for timber frames
- for unrebbated residential doors
- 3D adjustable (side +/- 1.5 mm, height +/- 2.5 mm, compression +/- 1.0 mm)
- central installation
- material zamak

Technical details

load capacity	i 2 hinges per door leaf (900x2100 mm)	60.0 kg
overall length		144.0 mm
width (frame)		30.0 mm
width (door)		30.0 mm
cutter diameter		14.0 or 16.0 mm
collar ring diameter		25.0 or 27.0 mm
opening angle		180°

Finish

Satin Chrome (AN 014), Coated Bronze (AN 017), Black (AN 018), Antique Bronze (AN 035), Aluminium Chrome (AN 036), Polished Brass (AN 037), Polished Chrome (AN 039), Satin Nickel (AN 044), RAL 9016 Traffic White (AN 049)

Note

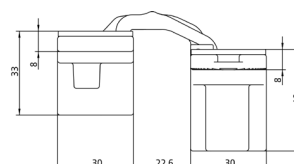
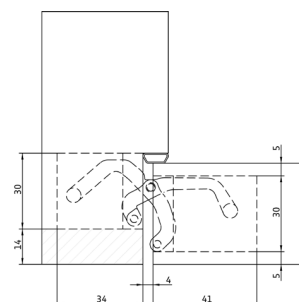
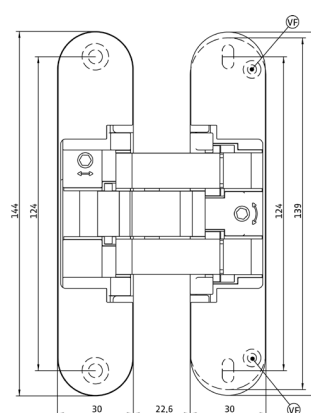
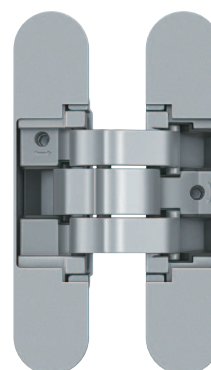
i The load capacity mentioned above refers to the use of 2 hinges per door leaf (900 x 2100 mm).

Suggested screws:

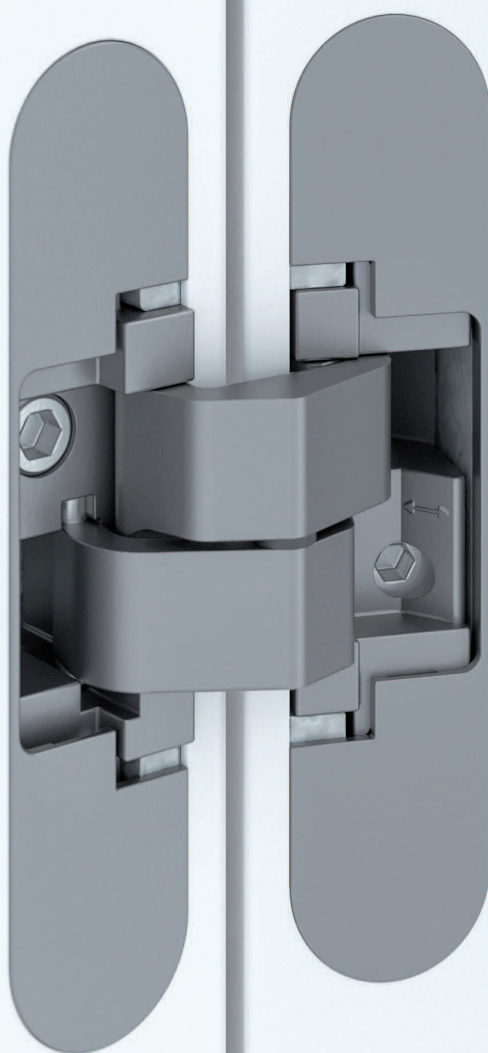
Frame side: Countersunk head screws DIN 7505 A, Diameter 5 mm

Door side: Pan head screws DIN 7505 B, Diameter 4 mm

If necessary, it is possible to lock the vertical adjustmet of the hinge by means of a vertical adjustment screw (VF).







Hinge system AN 150 3D

MODEL VERSIONS FOR DOORS WITH REDUCED FRAME MILLING

- › reduced hinge frame part
- › versions for aluminium framed doors
- › load capacities up to 60 kg
- › opening angle 180°

AN 130 2D

for unrebated residential doors with 21 mm reduced hinge frame part up to 20 kg

hinge	21 mm hinge frame part	up to 20 kg
-------	------------------------	-------------

Product features

- reduced hinge frame part 21 mm
- completely concealed hinge system
- for timber frames
- for unrebated residential doors
- 2D adjustable (height +/- 1.5 mm, compression +/- 1.0 mm)
- material zamak/IXEF

Technical details

load capacity	i 2 hinges per door leaf (900x2100 mm)	20.0 kg
overall length		110.0 mm
width (frame)		24.0 mm
width (door)		24.0 mm
cutter diameter		14.0 or 16.0 mm
collar ring diameter		25.0 or 27.0 mm
opening angle		180°

Finish

Satin Chrome (AN 014), Black (AN 018), RAL 9016 Traffic White (AN 049)

Combination

receiver	casing frame	AN 140 3D FZ
----------	--------------	--------------

Note

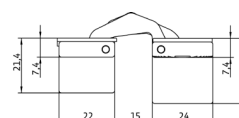
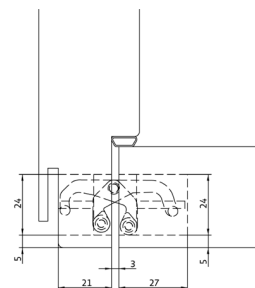
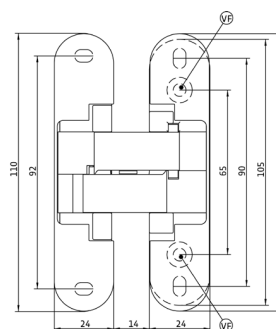
i The load capacity mentioned above refers to the use of 2 hinges per door leaf (900 x 2100 mm).

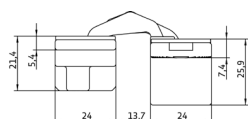
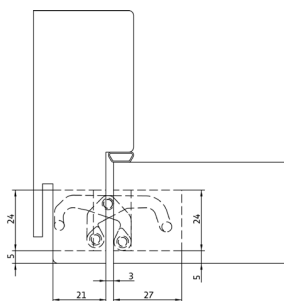
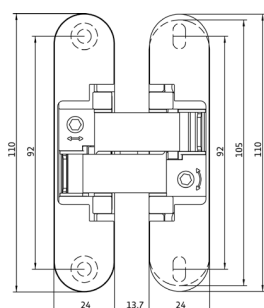
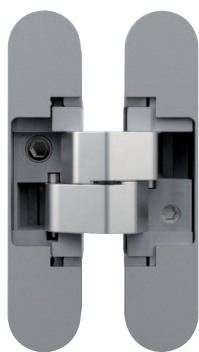
Suggested screws:

Frame side: Countersunk head screws DIN 7505 A, Diameter 4.5 mm

Door side: Countersunk head screws DIN 7505 A, Diameter 4.5 mm

If necessary, it is possible to lock the vertical adjustment of the hinge by means of a vertical adjustment screw (VF).





AN 150 3D

for unrebated residential doors with 21 mm reduced hinge frame part up to 40 kg

hinge	21 mm hinge frame part	up to 40 kg
-------	------------------------	-------------

Product features

- reduced hinge frame part 21 mm
- completely concealed hinge system
- for timber frames
- for unrebated residential doors
- 3D adjustable (side +/- 1.5 mm, height +/- 2.5 mm, compression +/- 1.0 mm)
- material zamak/ acetal

Technical details

load capacity	i 2 hinges per door leaf (900x2100 mm)	40.0 kg
overall length		110.0 mm
width (frame)		24.0 mm
width (door)		24.0 mm
cutter diameter		14.0 or 16.0 mm
collar ring diameter		25.0 or 27.0 mm
opening angle		180°

Finish

Satin Chrome (AN 014), Coated Bronze (AN 017), Black (AN 018), Antique Bronze (AN 035), Aluminium Chrome (AN 036), Polished Brass (AN 037), Polished Chrome (AN 039), Satin Nickel (AN 044), RAL 9016 Traffic White (AN 049)

Combination

receiver	casing frame	AN 140 3D FZ
----------	--------------	--------------

Note

i The load capacity mentioned above refers to the use of 2 hinges per door leaf (900 x 2100 mm).

Suggested screws:

Frame side: Countersunk head screws DIN 7505 A, Diameter 4.5 mm

Door side: Pan head screws DIN 7505 B, Diameter 4.5 mm

AN 150 3D ALU

for unrebated residential doors with aluminium frames and 21 mm reduced hinge frame part up to 40 kg

hinge	21 mm hinge frame part	up to 40 kg
-------	------------------------	-------------

Product features

- reduced hinge frame part 21 mm
- completely concealed hinge system
- for timber frames
- for unrebated residential doors with aluminium frames
- 3D adjustable (side +/- 1.5 mm, height +/- 1.5 mm, compression +/- 1.0 mm)
- material zamak/ acetal

Technical details

load capacity	i 2 hinges per door leaf (900x2100 mm)	40.0 kg
overall length		110.0 mm
width (frame)		24.0 mm
width (door)		24.0 mm
cutter diameter		14.0 or 16.0 mm
collar ring diameter		25.0 or 27.0 mm
opening angle		180°

Finish

Satin Chrome (AN 014), Coated Bronze (AN 017), Black (AN 018), Antique Bronze (AN 035), Aluminium Chrome (AN 036), Polished Brass (AN 037), Polished Chrome (AN 039), Satin Nickel (AN 044), RAL 9016 Traffic White (AN 049)

Combination

receiver	casing frame	AN 140 3D FZ
----------	--------------	--------------

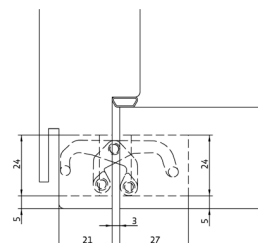
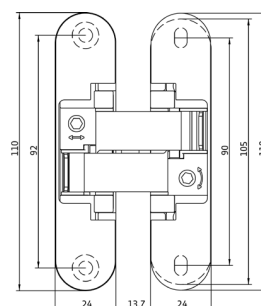
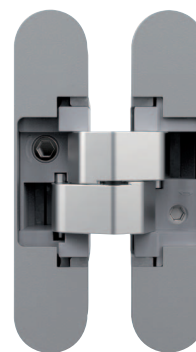
Note

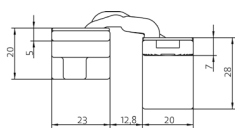
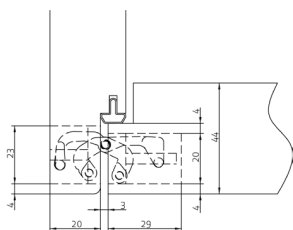
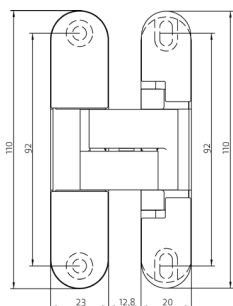
i The load capacity mentioned above refers to the use of 2 hinges per door leaf (900 x 2100 mm).

Suggested screws:

Frame side: Countersunk head screws DIN 7505 A, Diameter 4.5 mm

Door side: Countersunk head screws DIN 7505 A, Diameter 4.5 mm





AN 150 3D 28

for flush rebated 28 mm residential doors with 20 mm reduced hinge frame part up to 40 kg

Hinge	20 mm hinge frame part	up to 40 kg
--------------	-------------------------------	--------------------

Product features

- reduced hinge frame part 20 mm
- door thickness 28 mm
- completely concealed hinge system
- for timber frames
- for flush rebated residential doors
- 3D adjustable (side +/- 1.5 mm, height +/- 2.5 mm, compression +/- 1.0 mm)
- central installation
- material zamak

Technical details

load capacity	i 2 hinges per door leaf (900x2100 mm)	40.0 kg
overall length		110.0 mm
width (frame part)		23.0 mm
width (door part)		20.0 mm
cutter diameter		14.0 or 16.0
collar ring diameter		25.0 or 27.0
opening angle		180°

Finish

Satin Chrome (AN 014), Coated Bronze (AN 017), Black (AN 018), Antique Bronze (AN 035), Aluminium Chrome (AN 036), Polished Brass (AN 037), Polished Chrome (AN 039), Satin Nickel (AN 044), RAL 9016 Traffic White (AN 049)

Combination

receiver	casing frame	AN 140 3D FZ
----------	--------------	--------------

Note

i The load capacity mentioned above refers to the use of 2 hinges per door leaf (900 x 2100 mm).

Suggested screws:

Frame side: Countersunk head screw DIN 7505 A, Diameter 4.5 mm

Door side: Pan head screw DIN 7505 B, Diameter 4.5 mm

AN 150 3D 40

for unrebated 40 mm residential doors with central installation and 21 mm reduced hinge frame part up to 40 kg

hinge	21 mm hinge frame part	up to 40 kg
-------	------------------------	-------------

Product features

- reduced hinge frame part 21 mm
- door thickness 40 mm
- completely concealed hinge system
- for timber frames
- for unrebated residential doors
- 3D adjustable (side +/- 1.5 mm, height +/- 2.5 mm, compression +/- 1.0 mm)
- central installation
- material zamak/acetal

Technical details

load capacity	i 2 hinges per door leaf (900x2100 mm)	40.0 kg
overall length		110.0 mm
width (frame)		24.0 mm
width (door)		30.0 mm
cutter diameter		14.0 or 16.0 mm
collar ring diameter		25.0 or 27.0 mm
opening angle		180°

Finish

Satin Chrome (AN 014), Coated Bronze (AN 017), Black (AN 018), Antique Bronze (AN 035), Aluminium Chrome (AN 036), Polished Brass (AN 037), Polished Chrome (AN 039), Satin Nickel (AN 044), RAL 9016 Traffic White (AN 049)

Combination

receiver	casing frame	AN 140 3D FZ
----------	--------------	--------------

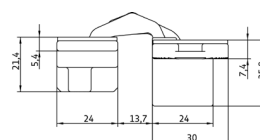
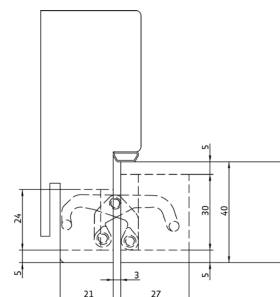
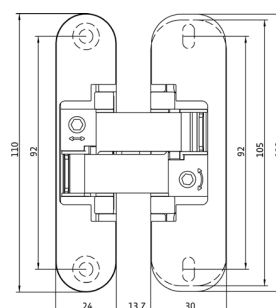
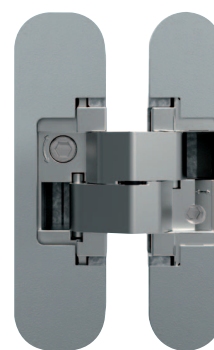
Note

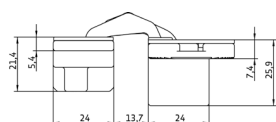
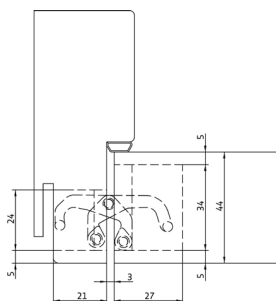
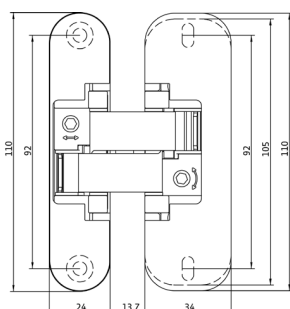
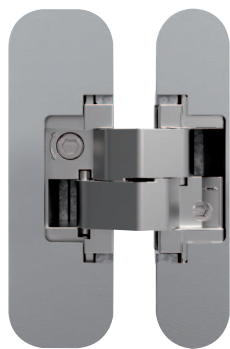
i The load capacity mentioned above refers to the use of 2 hinges per door leaf (900 x 2100 mm).

Suggested screws:

Frame side: Countersunk head screws DIN 7505 A, Diameter 4.5 mm

Door side: Pan head screw DIN 7505 B, Diameter 4.5 mm





AN 150 3D 44

for unrebated 44 mm residential doors with central installation and 21 mm reduced hinge frame part up to 40 kg

hinge	21 mm hinge frame part	up to 40 kg
-------	------------------------	-------------

Product features

- reduced hinge frame part 21 mm
- door thickness 44 mm
- completely concealed hinge system
- for timber frames
- for unrebated residential doors
- 3D adjustable (side +/- 1.5 mm, height +/- 2.5 mm, compression +/- 1.0 mm)
- central installation
- material zamak/acetel

Technical details

load capacity	i 2 hinges per door leaf (900x2100 mm)	40.0 kg
overall length		110.0 mm
width (frame)		24.0 mm
width (door)		34.0 mm
cutter diameter		14.0 or 16.0 mm
collar ring diameter		25.0 or 27.0 mm
opening angle		180°

Finish

Satin Chrome (AN 014), Coated Bronze (AN 017), Black (AN 018), Antique Bronze (AN 035), Aluminium Chrome (AN 036), Polished Brass (AN 037), Polished Chrome (AN 039), Satin Nickel (AN 044), RAL 9016 Traffic White (AN 049)

Combination

receiver	casing frame	AN 140 3D FZ
----------	--------------	--------------

Note

i The load capacity mentioned above refers to the use of 2 hinges per door leaf (900 x 2100 mm).

Suggested screws:

Frame side: Countersunk head screws DIN 7505 A, Diameter 4.5 mm

Door side: Pan head screw DIN 7505 B, Diameter 4.5 mm

AN 170 3D

for unrebated residential doors with 21 mm reduced hinge frame part up to 60 kg

hinge	21 mm hinge frame part	up to 60 kg
-------	------------------------	-------------

Product features

- reduced hinge frame part 21 mm
- completely concealed hinge system
- for timber frames
- for unrebated residential doors
- 3D adjustable (side +/- 1.5 mm, height +/- 2.5 mm, compression +/- 1.0 mm)
- material zamak

Technical details

load capacity	i 2 hinges per door leaf (900x2100 mm)	60.0 kg
overall length		110.0 mm
width (frame)		24.0 mm
width (door)		24.0 mm
cutter diameter		14.0 or 16.0 mm
collar ring diameter		25.0 or 27.0 mm
opening angle		180°

Finish

Satin Chrome (AN 014), Coated Bronze (AN 017), Black (AN 018), Antique Bronze (AN 035), Aluminium Chrome (AN 036), Polished Brass (AN 037), Polished Chrome (AN 039), Satin Nickel (AN 044), RAL 9016 Traffic White (AN 049)

Combination

receiver	casing frame	AN 140 3D FZ
----------	--------------	--------------

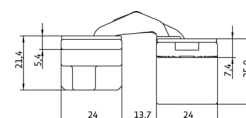
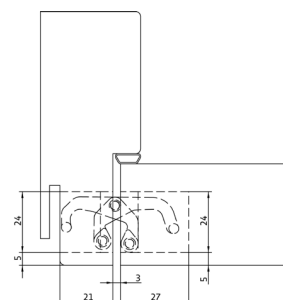
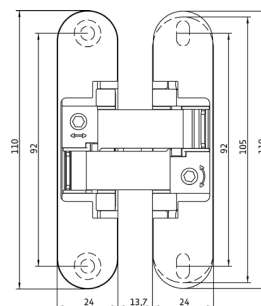
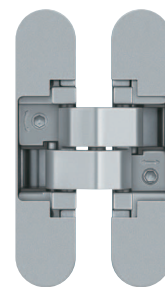
Note

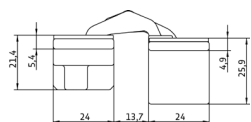
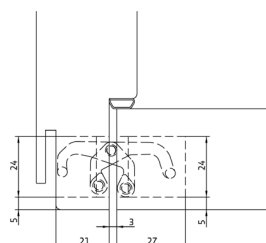
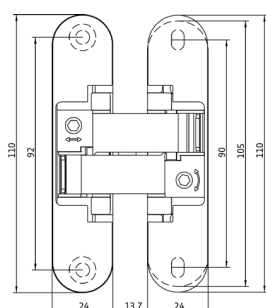
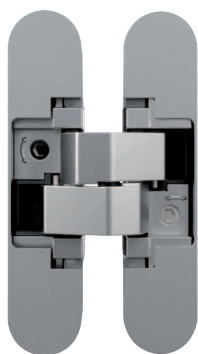
i The load capacity mentioned above refers to the use of 2 hinges per door leaf (900 x 2100 mm).

Suggested screws:

Frame side: Countersunk head screws DIN 7505 A, Diameter 4.5 mm

Door side: Pan head screws DIN 7505 B, Diameter 4.5 mm





AN 170 3D ALU

for unrebated residential doors with aluminium frames and 21 mm reduced hinge frame part up to 60 kg

hinge	21 mm hinge frame part	up to 60 kg
-------	------------------------	-------------

Product features

- reduced hinge frame part 21 mm
- completely concealed hinge system
- for timber frames
- for unrebated residential doors with aluminium frames
- 3D adjustable (side +/- 1.5 mm, height +/- 1.5 mm, compression +/- 1.0 mm)
- material zamak

Technical details

load capacity	i 2 hinges per door leaf (900x2100 mm)	60.0 kg
overall length		110.0 mm
width (frame)		24.0 mm
width (door)		24.0 mm
cutter diameter		14.0 or 16.0 mm
collar ring diameter		25.0 or 27.0 mm
opening angle		180°

Finish

Satin Chrome (AN 014), Coated Bronze (AN 017), Black (AN 018), Antique Bronze (AN 035), Aluminium Chrome (AN 036), Polished Brass (AN 037), Polished Chrome (AN 039), Satin Nickel (AN 044), RAL 9016 Traffic White (AN 049)

Combination

receiver	casing frame	AN 140 3D FZ
----------	--------------	--------------

Note

i The load capacity mentioned above refers to the use of 2 hinges per door leaf (900 x 2100 mm).

Suggested screws:

Frame side: Countersunk head screws DIN 7505 A, Diameter 4.5 mm

Door side: Countersunk head screws DIN 7505 A, Diameter 4.5 mm

AN 170 3D 40

for unrebated 40 mm residential doors with central installation and 21 mm reduced hinge frame part up to 60 kg

hinge	21 mm hinge frame part	up to 60 kg
-------	------------------------	-------------

Product features

- reduced hinge frame part 21 mm
- door thickness 40 mm
- for timber frames
- completely concealed hinge system
- for unrebated residential doors
- 3D adjustable (side +/- 1.5 mm, height +/- 2.5 mm, compression +/- 1.0 mm)
- central installation
- material zamak

Technical details

load capacity	i 2 hinges per door leaf (900x2100 mm)	60.0 kg
overall length		110.0 mm
width (frame)		24.0 mm
width (door)		30.0 mm
cutter diameter		14.0 or 16.0 mm
collar ring diameter		25.0 or 27.0 mm
opening angle		180°

Finish

Satin Chrome (AN 014), Coated Bronze (AN 017), Black (AN 018), Antique Bronze (AN 035), Aluminium Chrome (AN 036), Polished Brass (AN 037), Polished Chrome (AN 039), Satin Nickel (AN 044), RAL 9016 Traffic White (AN 049)

Combination

receiver	casing frame	AN 140 3D FZ
----------	--------------	--------------

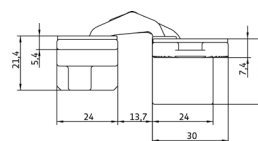
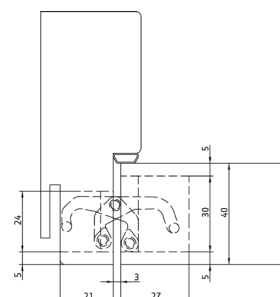
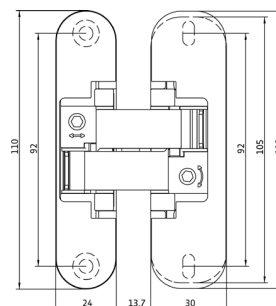
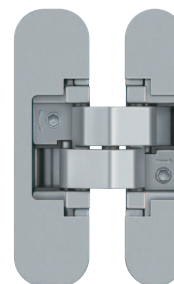
Note

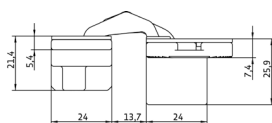
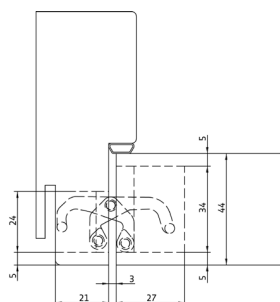
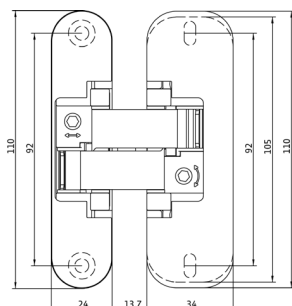
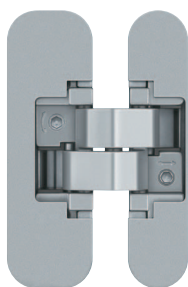
i The load capacity mentioned above refers to the use of 2 hinges per door leaf (900 x 2100 mm).

Suggested screws:

Frame side: Countersunk head screws DIN 7505 A, Diameter 4.5 mm

Door side: Pan head screws DIN 7505 B, Diameter 4.5 mm





AN 170 3D 44

for unrebeated 44 mm residential doors with central installation and 21 mm reduced hinge frame part up to 60 kg

hinge	21 mm hinge frame part	up to 60 kg
-------	------------------------	-------------

Product features

- reduced hinge frame part 21 mm
- door thickness 44 mm
- completely concealed hinge system
- for timber frames
- for unrebeated residential doors
- 3D adjustable (side +/- 1.5 mm, height +/- 2.5 mm, compression +/- 1.0 mm)
- central installation
- material zamak

Technical details

load capacity	i 2 hinges per door leaf (900x2100 mm)	60.0 kg
overall length		110.0 mm
width (frame)		24.0 mm
width (door)		34.0 mm
cutter diameter		14.0 or 16.0 mm
collar ring diameter		25.0 or 27.0 mm
opening angle		180°

Finish

Satin Chrome (AN 014), Coated Bronze (AN 017), Black (AN 018), Antique Bronze (AN 035), Aluminium Chrome (AN 036), Polished Brass (AN 037), Polished Chrome (AN 039), Satin Nickel (AN 044), RAL 9016 Traffic White (AN 049)

Combination

receiver	casing frame	AN 140 3D FZ
----------	--------------	--------------

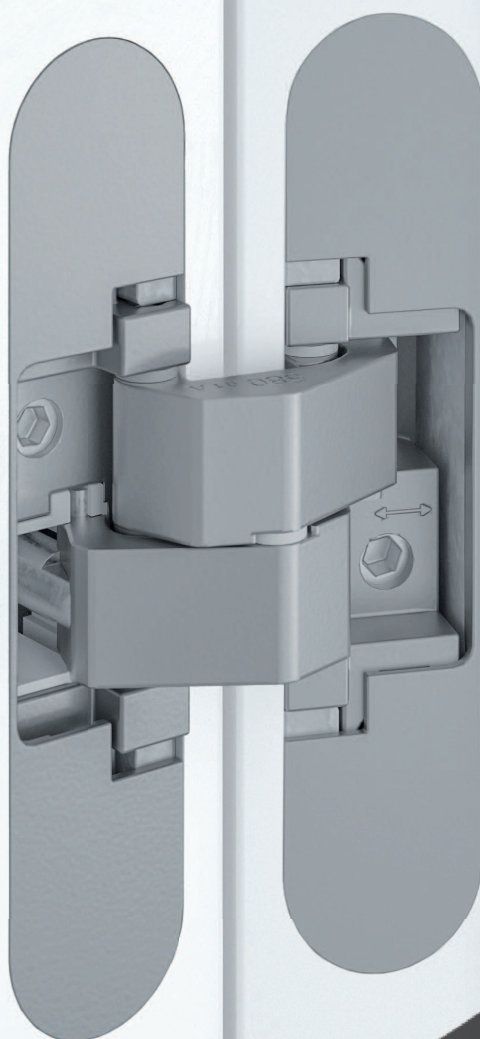
Note

i The load capacity mentioned above refers to the use of 2 hinges per door leaf (900 x 2100 mm).

Suggested screws:

Frame side: Countersunk head screws DIN 7505 A, Diameter 4.5 mm

Door side: Pan head screws DIN 7505 B, Diameter 4.5 mm



Hinge system AN 108 3D SC45

MODEL VERSIONS WITH INTEGRATED CLOSING FUNCTION

- › self closing hinge system
- › version with integrated damping function
- › closing power up to 60 kg
- › adjustable closing power when door is installed

AN 107 3D C40

with integrated self closing function for unrebated residential doors

Hinge	unrebated	up to 40 kg
-------	-----------	-------------

Product features

- self closing hinge system
- closing power from 20 kg up to 40 kg
- completely concealed hinge system
- for timber frames
- for unrebated residential doors
- adjustable closing power when door is installed
- material zamak/steel

Technical details

overall length	110.0 mm
width (frame part)	24.0 mm
width (door part)	24.0 mm
cutter diameter	14.0 or 16.0
collar ring diameter	25.0 or 27.0
opening angle	180°

Finishes

Satin Chrome (AN 014), Coated Bronze (AN 017), Black (AN 018), Antique Bronze (AN 035), Aluminium Chrome (AN 036), Polished Brass (AN 037), Polished Chrome (AN 039), Satin Nickel (AN 044), RAL 9016 Traffic White (AN 049)

Combination

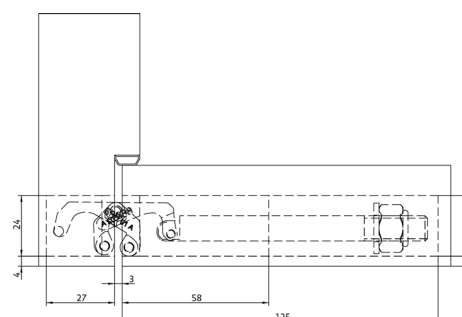
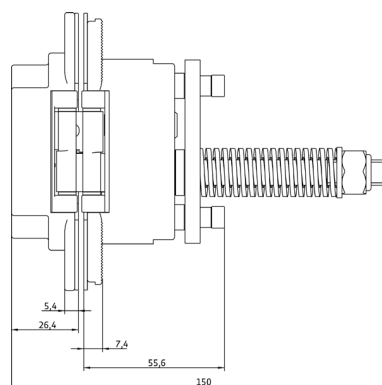
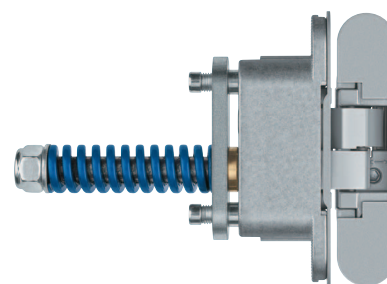
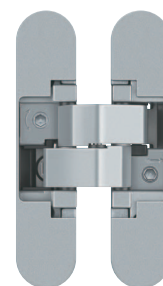
hinge	AN 140 3D
	AN 160 3D
receiver	casing frame
	AN 140 3D FZ

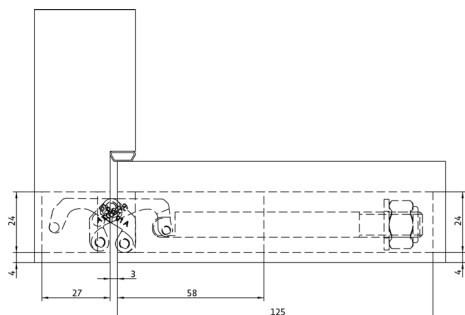
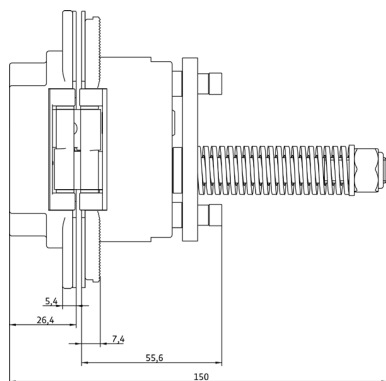
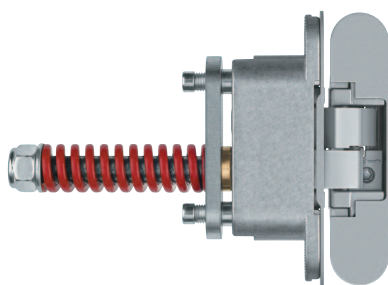
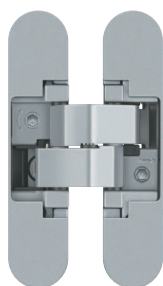
Note

i The closing power mentioned above refers to the use of one self closing hinge per door leaf (900 x 2100 mm).

The self closing hinge has to be used only in combination with the given hinges and has to be installed at half the height of the door leaf, approximately at the same height of the lock (magnetic lock recommended).

The installation on doors subject to specific norms has to be verified by the customer according to the national law.





AN 107 3D C60

with integrated self closing function for unrebated residential doors

Hinge	unrebated	up to 60 kg
--------------	------------------	--------------------

Product features

- self closing hinge system
- closing power from 40 kg up to 60 kg
- completely concealed hinge system
- for timber frames
- for unrebated residential doors
- adjustable closing power when door is installed
- material zamak/steel

Technical details

overall length	110.0 mm
width (frame part)	24.0 mm
width (door part)	24.0 mm
cutter diameter	14.0 or 16.0
collar ring diameter	25.0 or 27.0
opening angle	180°

Finishes

Satin Chrome (AN 014), Coated Bronze (AN 017), Black (AN 018), Antique Bronze (AN 035), Aluminium Chrome (AN 036), Polished Brass (AN 037), Polished Chrome (AN 039), Satin Nickel (AN 044), RAL 9016 Traffic White (AN 049)

Combination

hinge	AN 160 3D
	AN 180 3D
receiver	casing frame AN 140 3D FZ

Note

i The closing power mentioned above refers to the use of one self closing hinge per door leaf (900 x 2100 mm).

The self closing hinge has to be used only in combination with the given hinges and has to be installed at half the height of the door leaf, approximately at the same height of the lock (magnetic lock recommended).

The installation on doors subject to specific norms has to be verified by the customer according to the national law.

AN 108 3D SC45

with integrated self closing and damping function for unrebated residential doors

Hinge	unrebated	up to 45 kg
-------	-----------	-------------

Product features

- self closing hinge system with integrated damping function
- closing power up to 45 kg
- completely concealed hinge system
- for timber frames
- for unrebated residential doors
- adjustable closing power when door is installed
- material zamak/steel

Technical details

overall length	110.0 mm
width (frame part)	24.0 mm
width (door part)	24.0 mm
cutter diameter	14.0 or 16.0
collar ring diameter	25.0 or 27.0
opening angle	180°

Finishes

Satin Chrome (AN 014), Coated Bronze (AN 017), Black (AN 018), Antique Bronze (AN 035), Aluminium Chrome (AN 036), Polished Brass (AN 037), Polished Chrome (AN 039), Satin Nickel (AN 044), RAL 9016 Traffic White (AN 049)

Combination

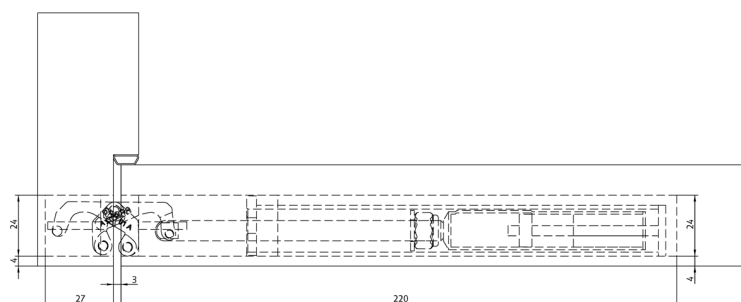
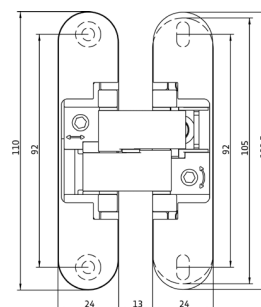
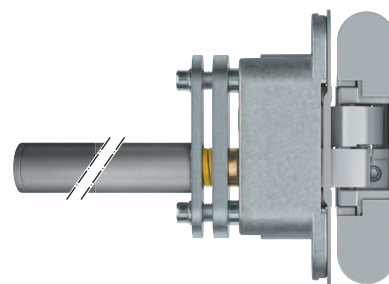
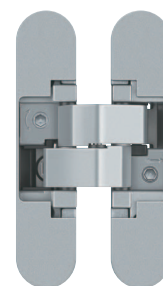
hinge		AN 140 3D
		AN 160 3D
receiver	casing frame	AN 140 3D FZ

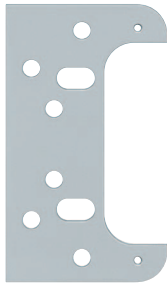
Note

i The closing power mentioned above refers to the use of one self closing hinge per door leaf (900 x 2100 mm).

The self closing hinge has to be used only in combination with the given hinges and has to be installed at half the height of the door leaf, approximately at the same height of the lock (magnetic lock recommended).

The installation on doors subject to specific norms has to be verified by the customer according to the national law.





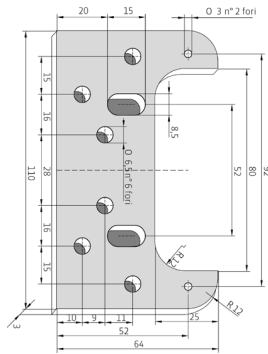
AN 140 3D FZ

for unrebated residential doors with casing frames

hinge

Combination

- AN 140 3D
- AN 140 3D ALU
- AN 160 3D
- AN 160 3D ALU
- AN 180 3D
- AN 130 2D
- AN 150 3D
- AN 150 3D ALU
- AN 150 3D 28
- AN 150 3D 40
- AN 150 3D 44
- AN 170 3D
- AN 170 3D ALU
- AN 170 3D 40
- AN 170 3D 44
- AN 107 3D C40
- AN 107 3D C60
- AN 108 3D SC45

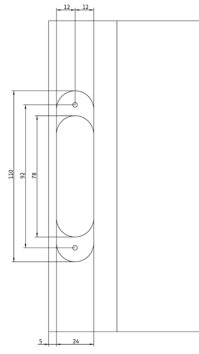


ROUTING DATA

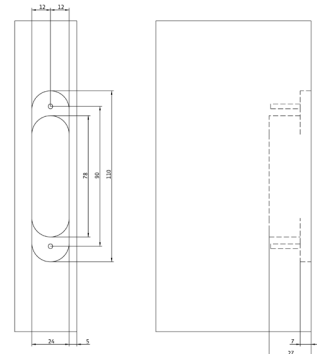
AN 130 2D

Conduct routing with cutter \varnothing 14 mm and collar ring \varnothing 25 mm or with cutter \varnothing 16 mm and collar ring \varnothing 27 mm.

Milling
frame



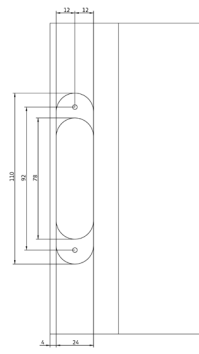
Milling
door



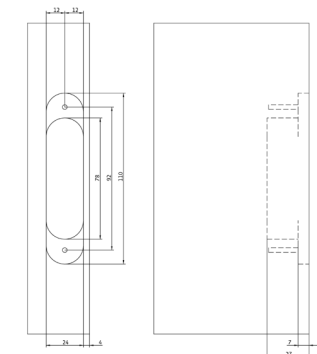
AN 140 3D

Conduct routing with cutter \varnothing 14 mm and collar ring \varnothing 25 mm or with cutter \varnothing 16 mm and collar ring \varnothing 27 mm.

Milling
frame



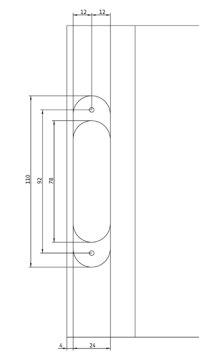
Milling
door



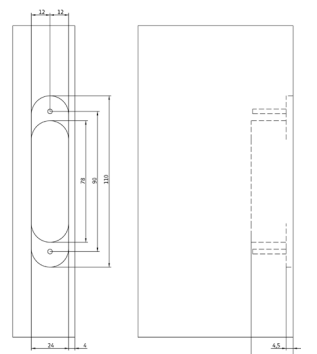
AN 140 3D ALU

Conduct routing with cutter \varnothing 14 mm and collar ring \varnothing 25 mm or with cutter \varnothing 16 mm and collar ring \varnothing 27 mm.

Milling
frame

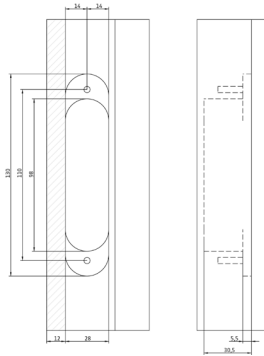


Milling
door

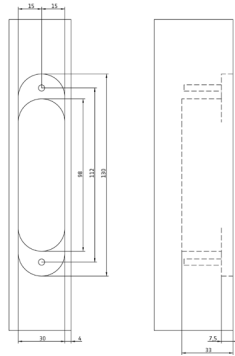


ROUTING DATA

Milling
frame



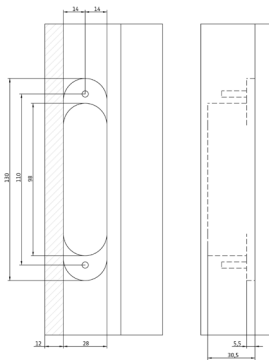
Milling
door



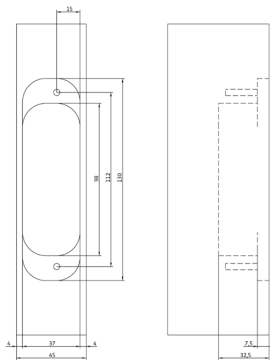
AN 141 3D FVZ 12/38

Conduct routing with cutter Ø 14 mm and collar ring Ø 25 mm or with cutter Ø 16 mm and collar ring Ø 27 mm.

Milling
frame



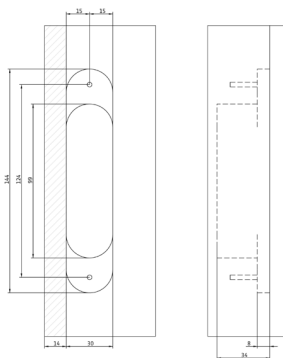
Milling
door



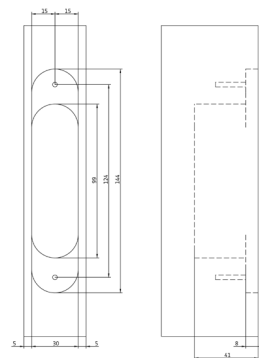
AN 141 3D FVZ 12/45

Conduct routing with cutter Ø 14 mm and collar ring Ø 25 mm or with cutter Ø 16 mm and collar ring Ø 27 mm.

Milling
frame



Milling
door



AN 141 3D FVZ 14/40

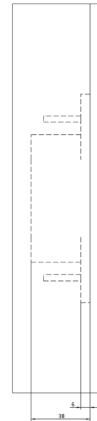
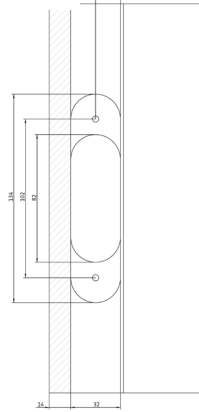
Conduct routing with cutter Ø 14 mm and collar ring Ø 25 mm or with cutter Ø 16 mm and collar ring Ø 27 mm.

ROUTING DATA

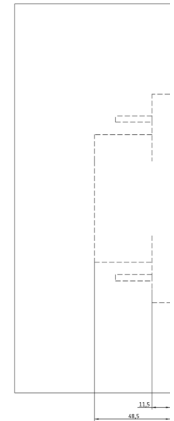
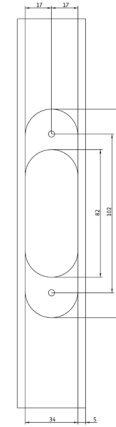
AN 141 3D FVZ 14/44

Conduct routing with cutter \varnothing 14 mm and collar ring \varnothing 25 mm or with cutter \varnothing 16 mm and collar ring \varnothing 27 mm.

Milling frame



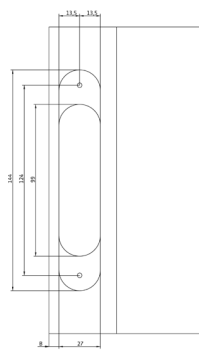
Milling door



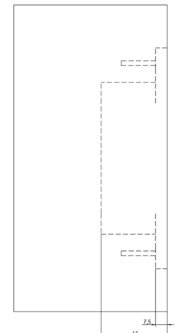
AN 142 3D

Conduct routing with cutter \varnothing 14 mm and collar ring \varnothing 25 mm or with cutter \varnothing 16 mm and collar ring \varnothing 27 mm.

Milling frame



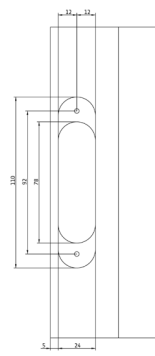
Milling door



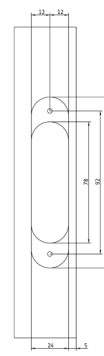
AN 150 3D

Conduct routing with cutter \varnothing 14 mm and collar ring \varnothing 25 mm or with cutter \varnothing 16 mm and collar ring \varnothing 27 mm.

Milling frame

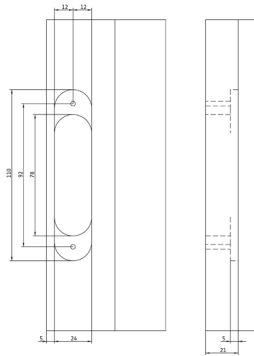


Milling door

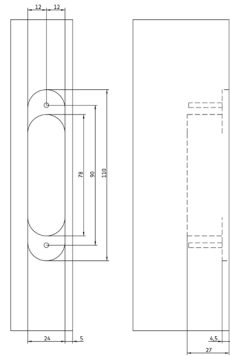


ROUTING DATA

Milling
frame



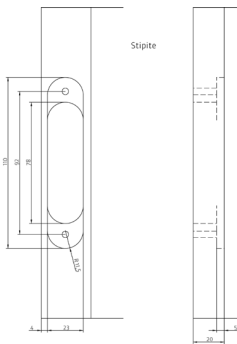
Milling
door



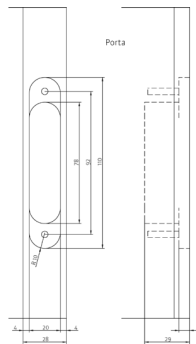
AN 150 3D ALU

Conduct routing with cutter Ø 14 mm and collar ring Ø 25 mm or with cutter Ø 16 mm and collar ring Ø 27 mm.

Milling
frame



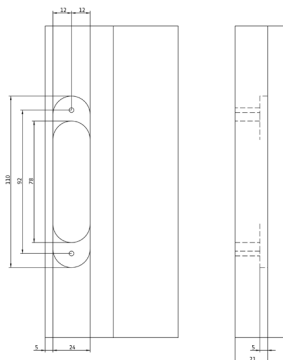
Milling
door



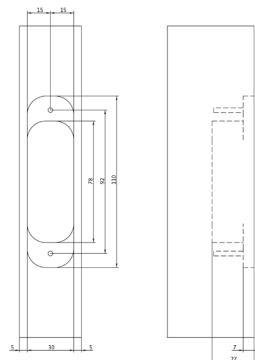
AN 150 3D 28

Conduct routing with cutter Ø 14 mm and collar ring Ø 25 mm or with cutter Ø 16 mm and collar ring Ø 27 mm.

Milling
frame



Milling
door



AN 150 3D 40

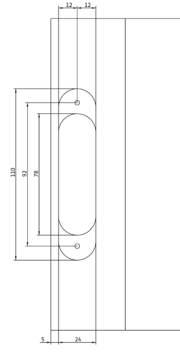
Conduct routing with cutter Ø 14 mm and collar ring Ø 25 mm or with cutter Ø 16 mm and collar ring Ø 27 mm.

ROUTING DATA

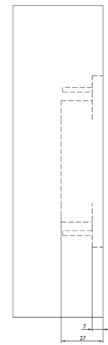
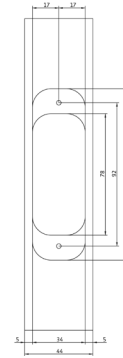
AN 150 3D 44

Conduct routing with cutter $\varnothing 14$ mm and collar ring $\varnothing 25$ mm or with cutter $\varnothing 16$ mm and collar ring $\varnothing 27$ mm.

Milling frame



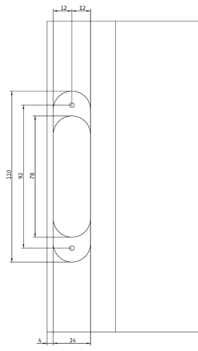
Milling door



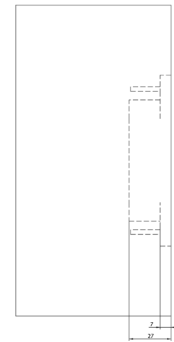
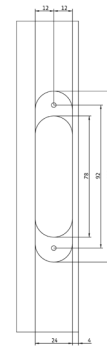
AN 160 3D

Conduct routing with cutter $\varnothing 14$ mm and collar ring $\varnothing 25$ mm or with cutter $\varnothing 16$ mm and collar ring $\varnothing 27$ mm.

Milling frame



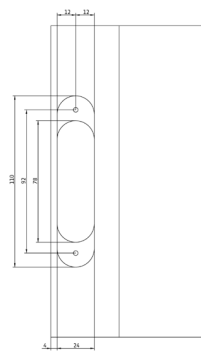
Milling door



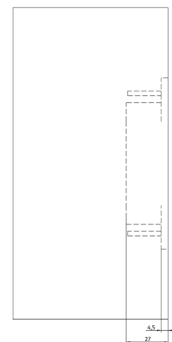
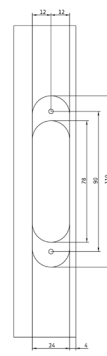
AN 160 3D ALU

Conduct routing with cutter $\varnothing 14$ mm and collar ring $\varnothing 25$ mm or with cutter $\varnothing 16$ mm and collar ring $\varnothing 27$ mm.

Milling frame

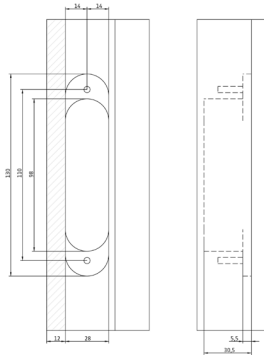


Milling door

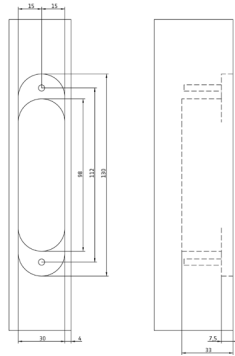


ROUTING DATA

Milling
frame



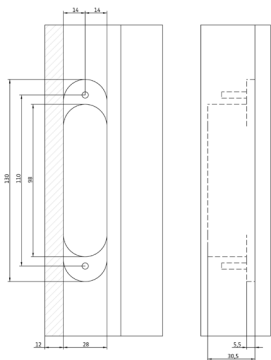
Milling
door



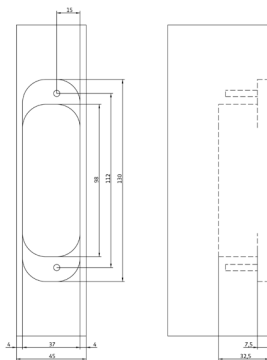
AN 161 3D FVZ 12/38

Conduct routing with cutter \varnothing 14 mm and collar ring \varnothing 25 mm or with cutter \varnothing 16 mm and collar ring \varnothing 27 mm.

Milling
frame



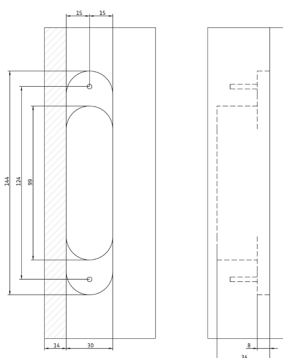
Milling
door



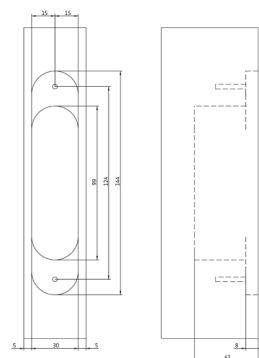
AN 161 3D FVZ 12/45

Conduct routing with cutter \varnothing 14 mm and collar ring \varnothing 25 mm or with cutter \varnothing 16 mm and collar ring \varnothing 27 mm.

Milling
frame



Milling
door



AN 161 3D FVZ 14/40

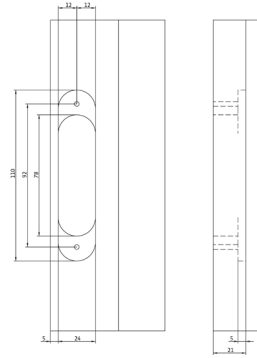
Conduct routing with cutter \varnothing 14 mm and collar ring \varnothing 25 mm or with cutter \varnothing 16 mm and collar ring \varnothing 27 mm.

ROUTING DATA

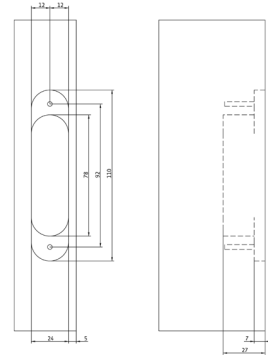
AN 170 3D

Conduct routing with cutter \varnothing 14 mm and collar ring \varnothing 25 mm or with cutter \varnothing 16 mm and collar ring \varnothing 27 mm.

Milling frame



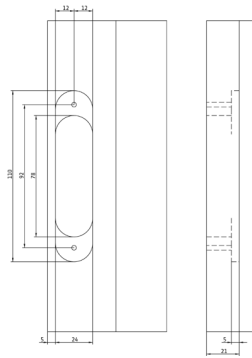
Milling door



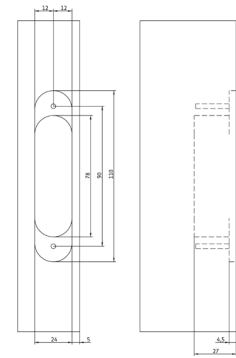
AN 170 3D ALU

Conduct routing with cutter \varnothing 14 mm and collar ring \varnothing 25 mm or with cutter \varnothing 16 mm and collar ring \varnothing 27 mm.

Milling frame



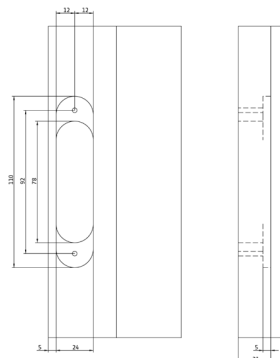
Milling door



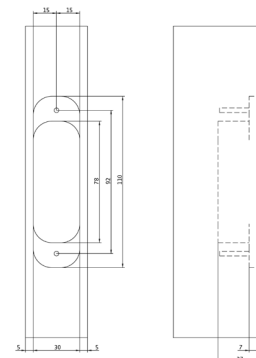
AN 170 3D 40

Conduct routing with cutter \varnothing 14 mm and collar ring \varnothing 25 mm or with cutter \varnothing 16 mm and collar ring \varnothing 27 mm.

Milling frame

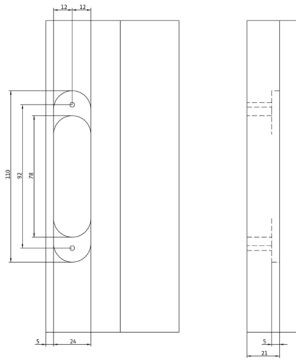


Milling door

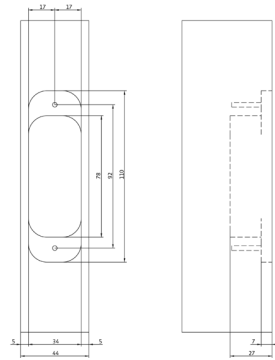


ROUTING DATA

Milling
frame



Milling
door



AN 170 3D 44

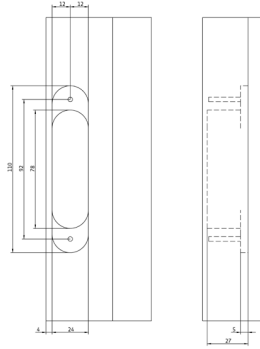
Conduct routing with cutter \varnothing 14 mm and collar ring \varnothing 25 mm or with cutter \varnothing 16 mm and collar ring \varnothing 27 mm.

ROUTING DATA

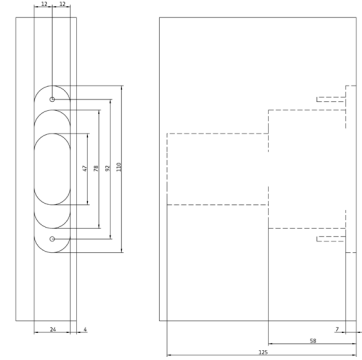
AN 107 3D C40

Conduct routing with cutter \varnothing 14 mm and collar ring \varnothing 25 mm or with cutter \varnothing 16 mm and collar ring \varnothing 27 mm.

Milling frame



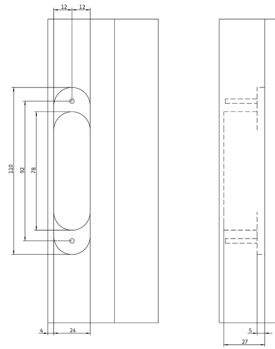
Milling door



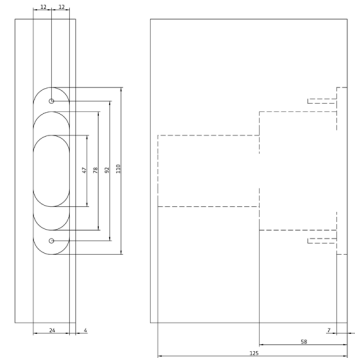
AN 107 3D C60

Conduct routing with cutter \varnothing 14 mm and collar ring \varnothing 25 mm or with cutter \varnothing 16 mm and collar ring \varnothing 27 mm.

Milling frame



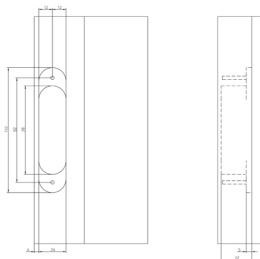
Milling door



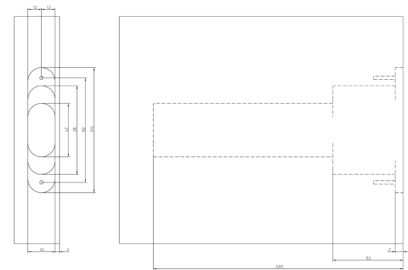
AN 108 3D SC45

Conduct routing with cutter \varnothing 14 mm and collar ring \varnothing 25 mm or with cutter \varnothing 16 mm and collar ring \varnothing 27 mm.

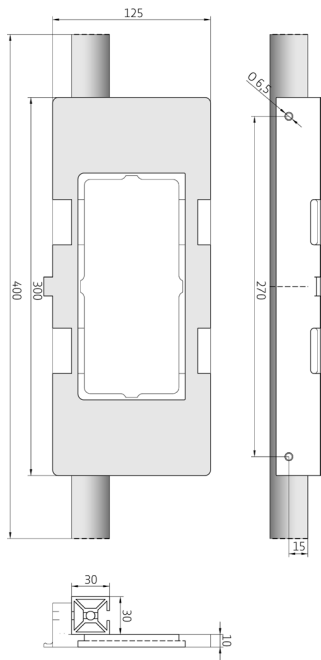
Milling frame



Milling door



APPLICATION ACCESSORIES



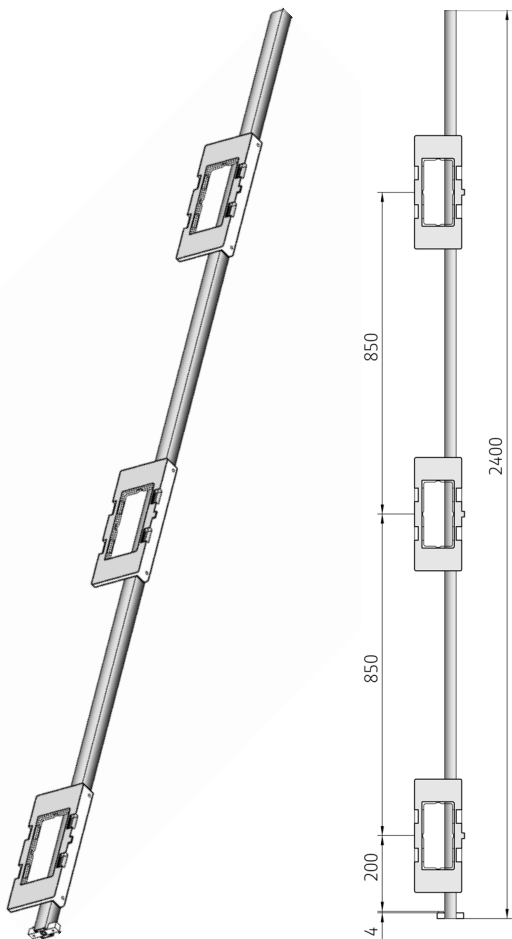
Universal single milling frame

as well fitting installation aid for ANSELMI templates

accessories

Note

Available with and without clamps. Templates need be ordered separately.



Universal triple milling frame

as well fitting installation aid for ANSELMI templates

accessories

Note

Available with and without clamps. Templates need be ordered separately.

APPLICATION ACCESSORIES

Template double

for precise routings in conjunction with ANSELMI jig technique

accessories

Technical details

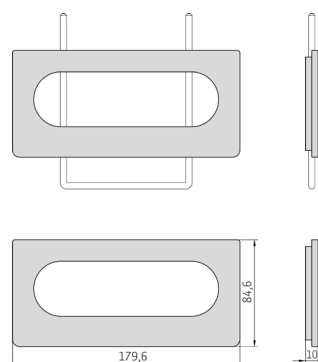
cutter diameter	14.0 or 16.0 mm
collar ring diameter	25.0 or 27.0 mm

Combination

hinge	AN 141 3D FVZ 14/44
-------	---------------------

Note

All indicated dimensions of angle and rail are just standards which may vary on the actual measurements depending on the construction. Where applicable, a trial routing is recommended.



Template single

for precise routings in conjunction with ANSELMI jig technique

accessories

Technical details

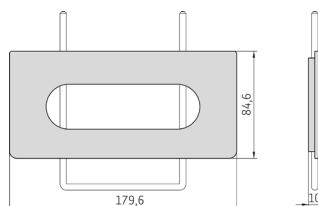
cutter diameter	14.0 or 16.0 mm
collar ring diameter	25.0 or 27.0 mm

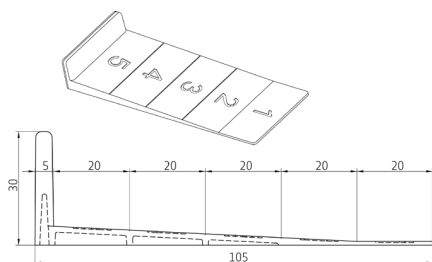
Combination

hinge	AN 140 3D
	AN 140 3D ALU
	AN 160 3D
	AN 160 3D ALU
	AN 180 3D
	AN 130 2D
	AN 150 3D
	AN 150 3D ALU

Note

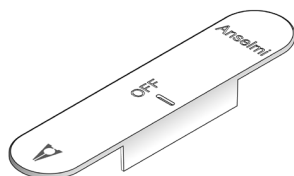
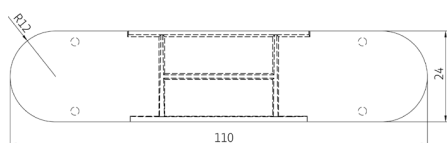
All indicated dimensions of angle and rail are just standards which may vary on the actual measurements depending on the construction. Where applicable, a trial routing is recommended.





Door height adjustment wedge

as tool to ease the adjustment of the door height from 1 mm up to 5 mm



Disposable/varnishable frame hole cover

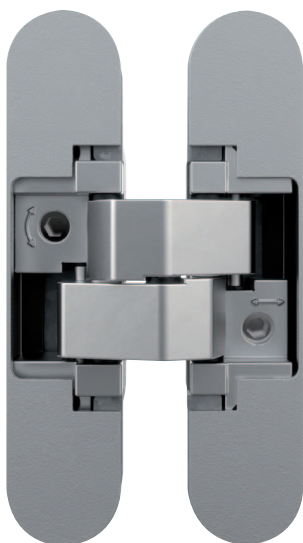
to protect the hinge seat during the installation of the frame

Note

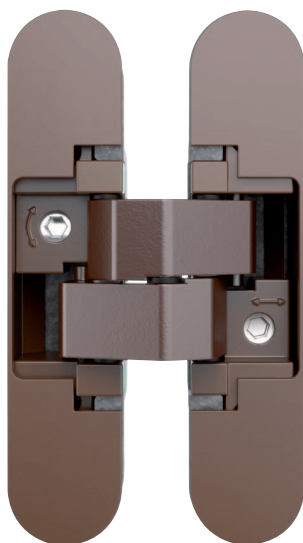
The frame hole cover is especially indicated when the frames (usually aluminium frames) are installed on the building site several weeks or months before the doors are produced. The cover will protect the hinge seat from dust, cement, paint etc. and when the door will arrive on site the installation will result easier.

The use of this frame hole cover requires a special hinge packaging. Please contact us for further information.

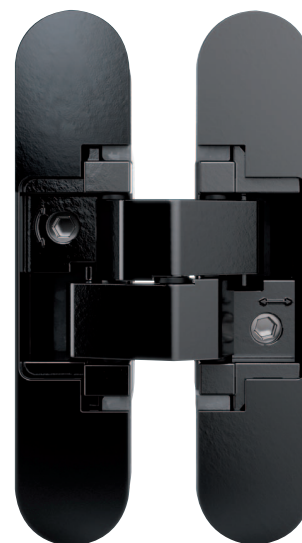
FINISHES



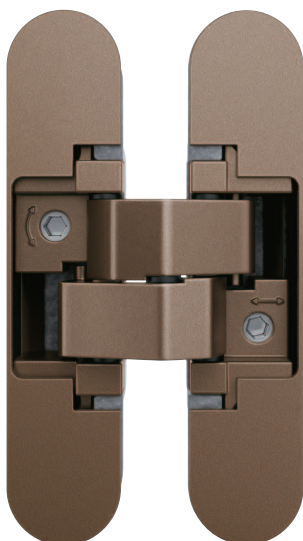
Satin Chrome (AN 014)



Coated Bronze (AN 017)



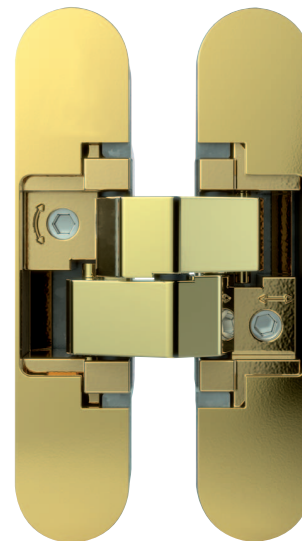
Black (AN 018)



Antique Bronze (AN 035)



Aluminium Chrome (AN 036)



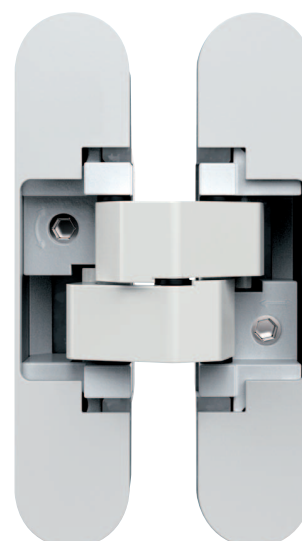
Polished Brass (AN 037)



Polished Chrome (AN 039)



Satin Nickel (AN 044)



RAL 9016 Traffic White (AN 049)

PLEASE VISIT OUR PRODUCTSELECTOR AT
www.anselmisrl.it

Anselmi & C. S.r.l.

Via Ca' Morelli, 19
31056 Roncade (Treviso)
Italy

Fon +39 (0)422/707426
Fax +39 (0)422/840836

info@anselmisrl.it
www.anselmisrl.it

SIMONSWERK GmbH

Bosfelder Weg 5
33378 Rheda-Wiedenbrück
Germany

Fon +49 (0)5242/413-0
Fax +49 (0)5242/413-260

sales@simonswerk.de
www.simonswerk.com

