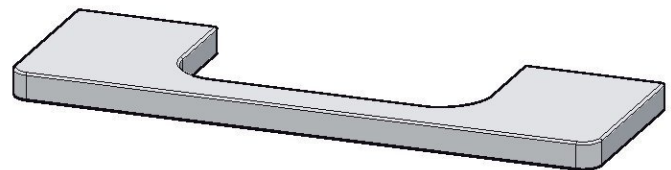


| cod. | C | L | descr. |
|-------|-----|-----|-------------|
| 24715 | 096 | 126 | i-110 / 096 |
| 24720 | 128 | 158 | i-110 / 128 |
| 24725 | 160 | 190 | i-110 / 160 |
| 24730 | 192 | 222 | i-110 / 192 |
| 24750 | 320 | 350 | i-110 / 320 |
| 24780 | 512 | 542 | i-110 / 512 |



AISI 304, mate. Tolerancias generales del plano: $\pm 0,5\text{mm}$.
AISI 304, matte. General tolerances of technical drawing: $\pm 0,5\text{mm}$.
AISI 304, mat. Tolérance générale du plan technique: $\pm 0,5\text{mm}$.

i-110